

# CERTIFICATE OF LOCATION OF GOVERNMENT CORNER

E 1/4 West Quarter Corner of Section 36, Township 42, Range 22, 4 P.M.

STATE OF MINNESOTA, County of Pine & KANABEC

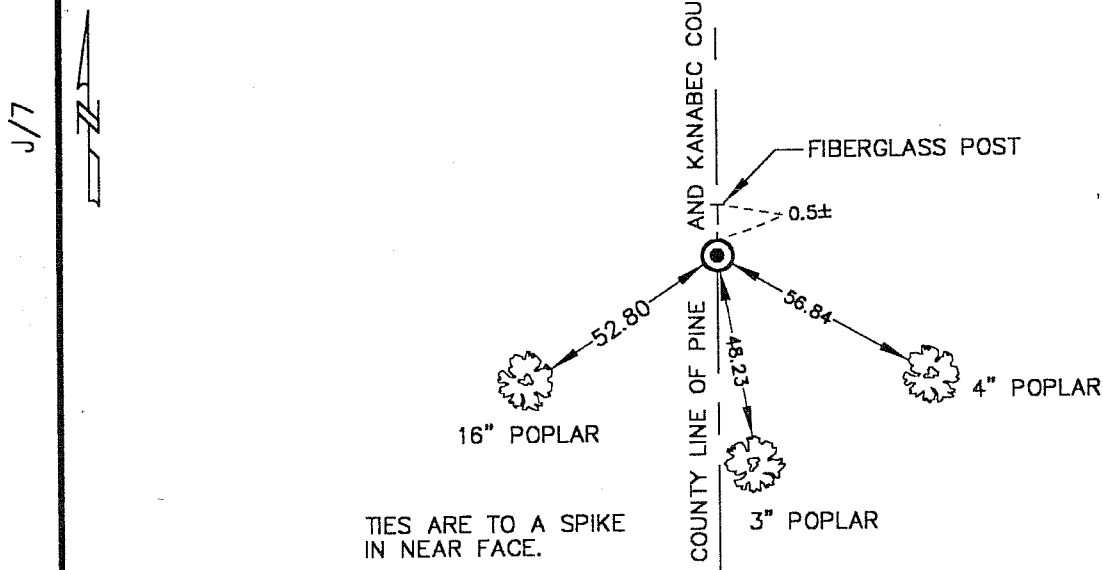
At the corner location shown on the sketch

On 12-7-00 found a 7/8" X 72" Capped Rebar, per Cert. in Pine Co. Records Office.  
Date

left monument as found, [ ] lowered monument, [ ] removed monument (explain)

[ ] On \_\_\_\_\_ placed a \_\_\_\_\_  
Date

## SKETCH OF REFERENCE TIES



TIES ARE TO A SPIKE IN NEAR FACE.

MNDOT PINE COUNTY COORDINATE SYSTEM  
(NAD83 HARN 96 ADJUSTMENT)  
NORTHING = 227181.16  
EASTING = 460646.69

Statement of evidence relative to this corner location is on back of page.

I hereby certify that this document and the data contained herein was prepared by me or under my direct supervision.

[Signature] 12-14-00  
Signature Date

Registration No. 8195

[ ] Land Surveyor, [ ] Professional Engineer  
[X] County Surveyor, [ ] County Engineer

OFFICE OF THE COUNTY RECORDER

County of \_\_\_\_\_

I hereby certify that this document was filed in the County Recorder's office at \_\_\_\_\_ M. on the \_\_\_\_\_ day of \_\_\_\_\_ A.D., 19 \_\_\_\_\_

County Recorder \_\_\_\_\_  
By \_\_\_\_\_ Deputy

DOCUMENT NO. \_\_\_\_\_

## LAND CORNER HISTORY

W 1/4 Corner of Section 31 Township 42 Range 21

In 1994 we set a 7/8 inch by 72 inch capped rebar at this corner and filed a corner certificate.

In march of 2000 we ran a survey along the west line of T. 42 R. 21 and corners east and west of the township line to locate existing monuments, lines of occupation and search areas.

We found the capped rebar per the certificate on file and made new reference ties.

# CERTIFICATE OF LOCATION OF GOVERNMENT CORNER

E 1/4 Corner of Section 36, Township 42, Range 22, 4<sup>TH</sup> P.M.

STATE OF MINNESOTA, County of KANABEC

At the corner location shown on the sketch

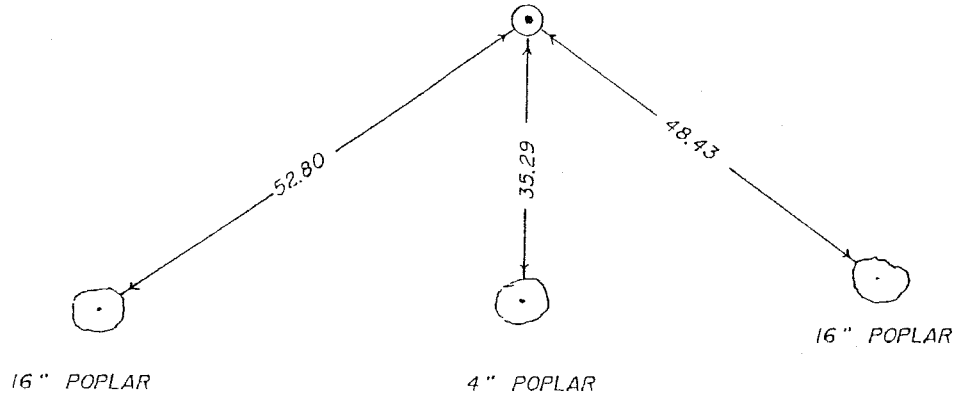
On \_\_\_\_\_ found a \_\_\_\_\_  
Date

left monument as found,  lowered monument,  removed monument (explain)

On 9-12-94 placed a 7/8" x 6' CAPPED REBAR  
Date

## SKETCH OF REFERENCE TIES

TIES ARE TO A SPK. IN  
BLAZE IN NEAR FACE



Statement of evidence relative to this corner location is on back of page.

I hereby certify that this document and the data contained herein was prepared by me or under my direct supervision.

[Signature] 9-29-94  
Signature Date

Registration No. 8195

Land Surveyor,  Professional Engineer

County Surveyor,  County Engineer

## OFFICE OF THE COUNTY RECORDER

County of \_\_\_\_\_

I hereby certify that this document was filed in the County Recorder's office at \_\_\_\_\_ M. on the \_\_\_\_\_ day of \_\_\_\_\_ A.D., 19 \_\_\_\_\_

County Recorder \_\_\_\_\_

By \_\_\_\_\_ Deputy

DOCUMENT NO. \_\_\_\_\_

STATEMENT OF EVIDENCE

All of the original bearing trees are now gone.

There is no resurvey data on file for this corner.

There are no definite lines of occupation in this area.

We set this corner on line and a proportional measurement between the northwest and southwest corners of Section 31, Township 42, Range 21.