

# CERTIFICATE OF LOCATION OF GOVERNMENT CORNER

SE

Southwest

36

Corner of Section 31

, Township 42

22

, Range 21

, 4 P.M.

STATE OF MINNESOTA, County of Pine ~~HANABEE~~

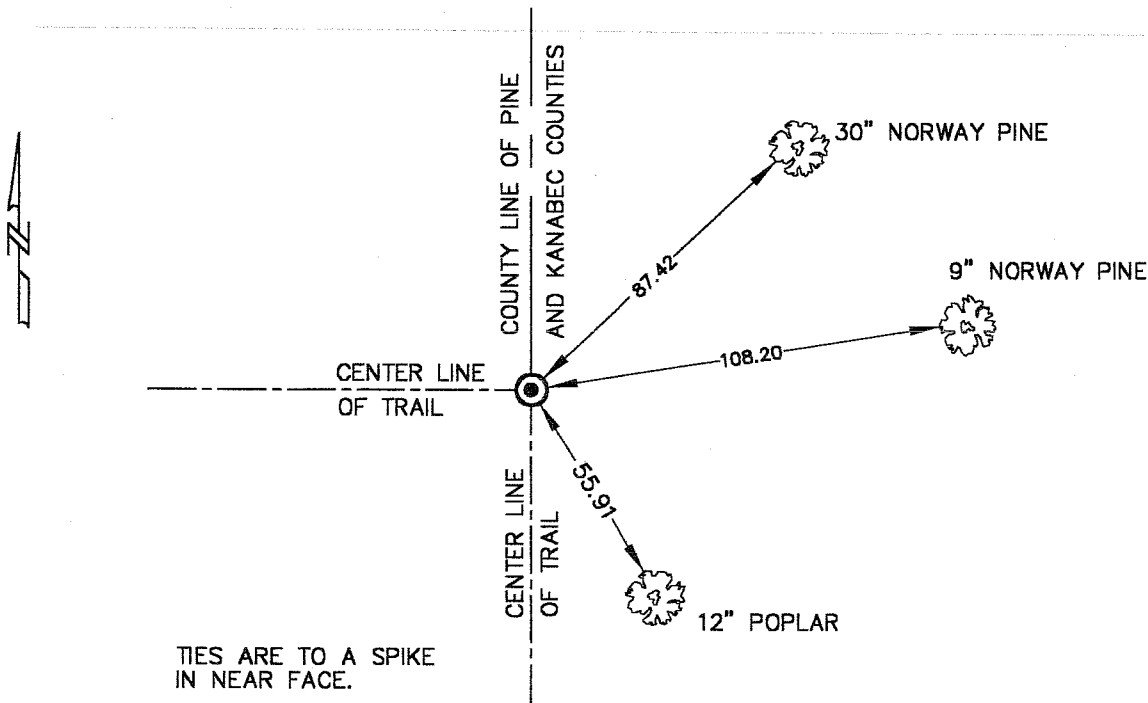
At the corner location shown on the sketch

On 12-7-00 found a 7/8" X 24" Capped Rebar, per Cert. in Pine Co. Records Office.  
Date

left monument as found,  lowered monument,  removed monument (explain)

On \_\_\_\_\_ placed a \_\_\_\_\_  
Date

## SKETCH OF REFERENCE TIES



TIES ARE TO A SPIKE IN NEAR FACE.

MNDOT PINE COUNTY COORDINATE SYSTEM  
(NAD83 HARN 96 ADJUSTMENT)  
NORTHING = 224519.68  
EASTING = 460624.47

Statement of evidence relative to this corner location is on back of page.

I hereby certify that this document and the data contained herein was prepared by me or under my direct supervision.

M. B. [Signature] 12-14-00  
Signature Date

Registration No. 8195

Land Surveyor,  Professional Engineer

County Surveyor,  County Engineer

## OFFICE OF THE COUNTY RECORDER

County of \_\_\_\_\_

I hereby certify that this document was filed in the County Recorder's office at \_\_\_\_\_ M. on the \_\_\_\_\_ day of \_\_\_\_\_ A.D., 19 \_\_\_\_\_

County Recorder \_\_\_\_\_

By \_\_\_\_\_ Deputy

DOCUMENT NO. \_\_\_\_\_

J/6

## LAND CORNER HISTORY

SW Corner of Section 31 Township 42 Range 21

In 1994 we set a 7/8 inch by 24 inch capped rebar at this corner and filed a corner certificate.

In march of 2000 we ran a survey along the west line of T. 42 R. 21 and corners east and west of the township line to locate existing monuments, lines of occupation and search areas.

We found the capped rebar per the certificate on file and made new reference ties.

# CERTIFICATE OF LOCATION OF GOVERNMENT CORNER

NE. Corner of Section 1, Township 41, Range 22, 4TH. P.M.  
STATE OF MINNESOTA, County of KANABEC

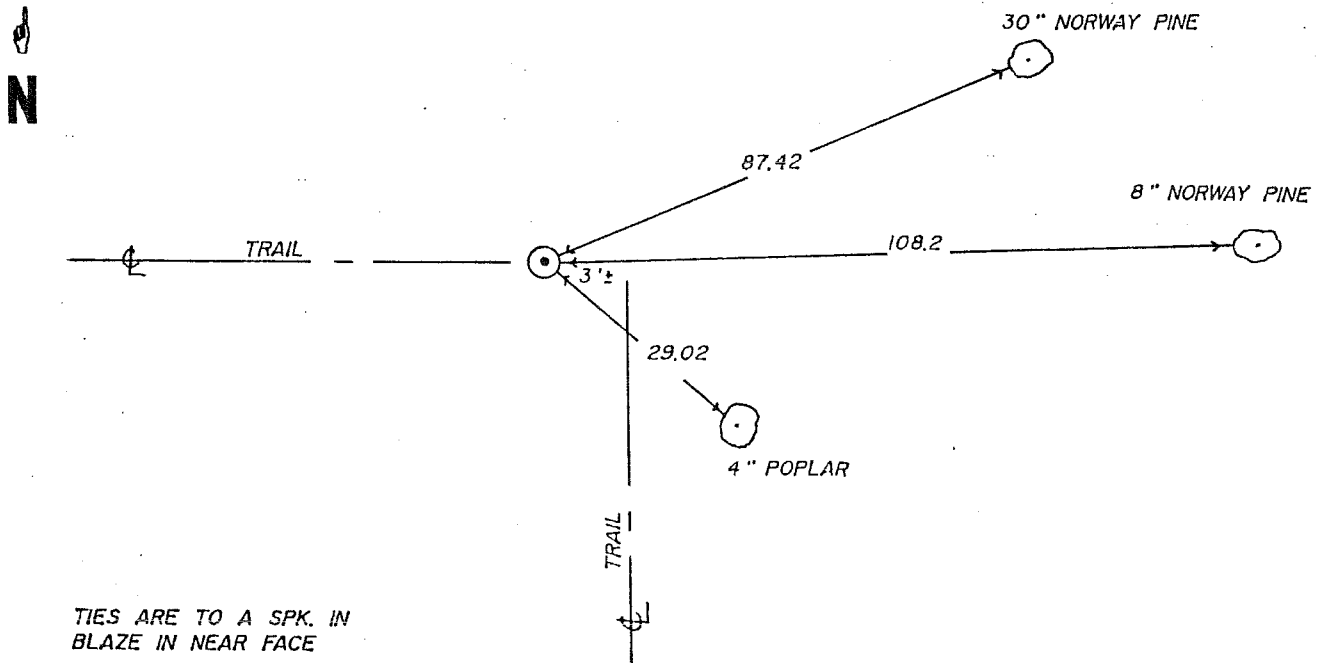
At the corner location shown on the sketch

On \_\_\_\_\_ found a \_\_\_\_\_  
Date

left monument as found,  lowered monument,  removed monument (explain)

On 9-12-94 placed a 7/8" x 24" CAPPED REBAR  
Date

## SKETCH OF REFERENCE TIES



Statement of evidence relative to this corner location is on back of page.

I hereby certify that this document and the data contained herein was prepared by me or under my direct supervision.

[Signature] 10-6-94  
Signature Date

Registration No. 8195

Land Surveyor,  Professional Engineer

County Surveyor,  County Engineer

## OFFICE OF THE COUNTY RECORDER

County of \_\_\_\_\_

I hereby certify that this document was filed in the County Recorder's office at \_\_\_\_\_ M. on the \_\_\_\_\_ day of \_\_\_\_\_ A.D., 19\_\_\_\_

County Recorder \_\_\_\_\_

By \_\_\_\_\_ Deputy

DOCUMENT NO. \_\_\_\_\_

## STATEMENT OF EVIDENCE

All of the original bearing trees are now gone.

There is no re-survey data on file for this corner.

In 1986, Ron Murphy RLS, made a survey in Township 41, Range 21, for township roads and searched for this corner, but no evidence was found.

In January of 1994, we ran a survey north, south, east and west from this corner to locate existing monuments and lines of occupation.

After analyzing the field and record evidence, the center line of town road west and proportional measurement between the north quarter corner of Section 6, Township 41, Range 21 and the north quarter corner of Section 1, Township 41, Range 22, was accepted as the best available evidence for this corner.