

# CERTIFICATE OF LOCATION OF GOVERNMENT CORNER

**NORTHEAST Corner of Section 7  
Township 40 North, Range 24 West, 4th P.M.**

**KANABEC COUNTY, MINNESOTA**

On January, 2018, found a(n): no evidence of corner

- Left monument as found       Lowered monument  
 Removed monument (explain)       Raised monument

On 2-07-2018, set a(n): set a capped 1/2"x18" iron pipe  
marked with RLS # 52694

(reserved for recording data)

See "Statement of Evidence" for further details (on back)

Project No.: R16.115681

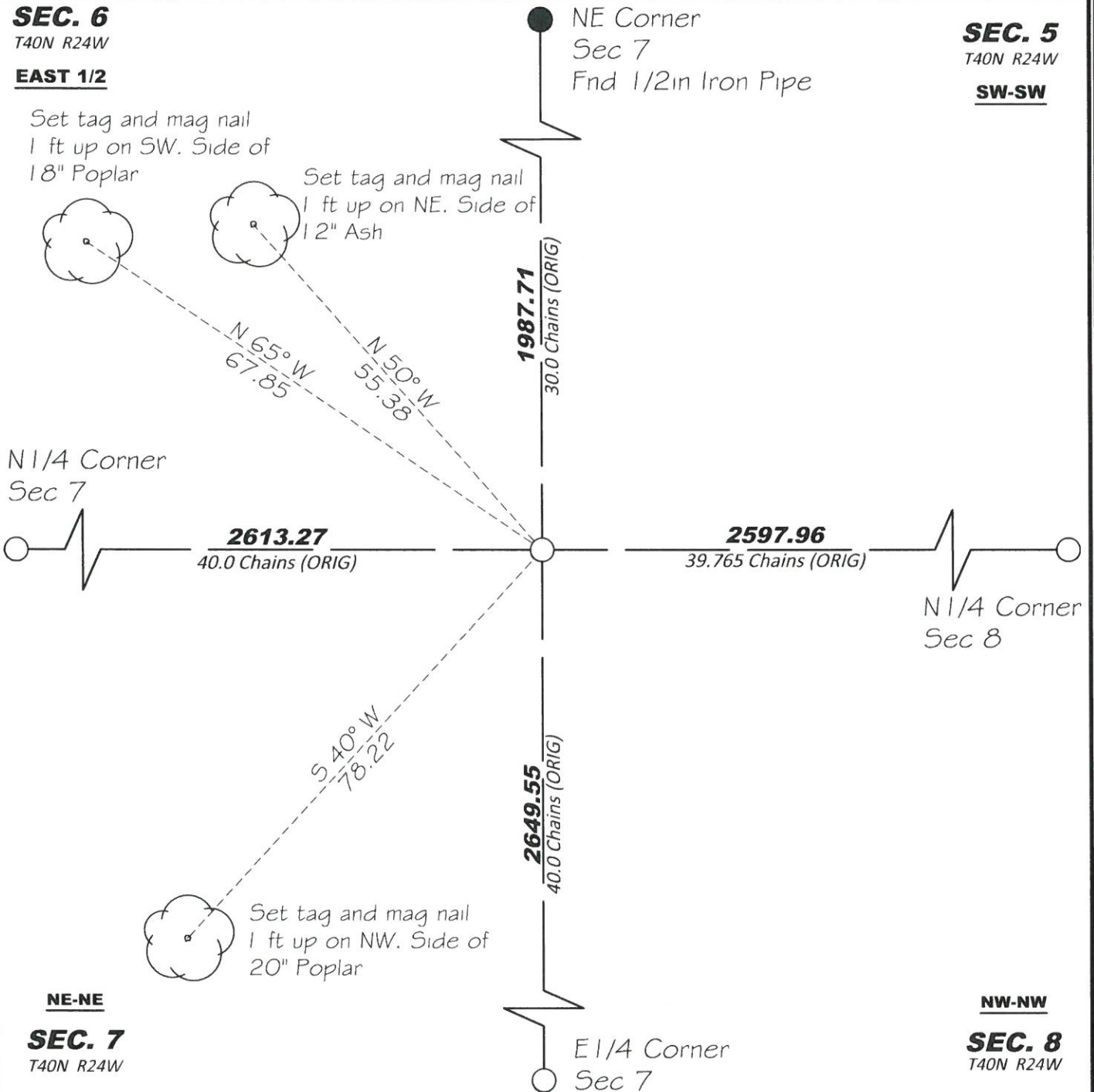
**SEC. 6**

T40N R24W

**EAST 1/2**

Set tag and mag nail  
1 ft up on SW. Side of  
18" Poplar

Set tag and mag nail  
1 ft up on NE. Side of  
12" Ash



**SEC. 5**

T40N R24W

**SW-SW**

N 1/4 Corner  
Sec 7

N 1/4 Corner  
Sec 8

**NE-NE**

**SEC. 7**

T40N R24W

**NW-NW**

**SEC. 8**

T40N R24W

E 1/4 Corner  
Sec 7

**"SKETCH OF REFERENCE TIES"**

(not to scale - bearings are magnetic)

Ties are measured to center of monument unless otherwise noted.

UNITS =  Metric  English

**KANABEC COUNTY COORDINATES  
NAD 83 (1996 Adjustment)**

Northing: 190161.337  
 Easting: 380388.695

I hereby certify that this survey, plan, or report was prepared by me or under my direct supervision and that I am a duly Licensed Land Surveyor under the laws of the State of Minnesota. I further certify that this Certificate of Location of Government Corner is correct and complete to the best of my knowledge and belief.



*Zachary L. Zetah*  
signature      Zachary L. Zetah

06-18-2018  
date

License No. 52694

- County Surveyor       Deputy County Surveyor       Professional Land Surveyor

drawn by: ZLZ

Statement of Evidence**NORTHEAST Corner, Section 7, T. 40 N., R. 24 W.****March, 1872**

Corner was set during township subdivision by Silas Barnard, dated May 21<sup>st</sup>, 1855. Survey Commence on October 6<sup>th</sup>, 1855 and was completed on October 23<sup>rd</sup>, 1855. A distance of 40.00 chains (2640.00 feet) is measured to the North and East Quarter corner of Section 7, a distance of 39.765 chains (2621.49 feet) was measured to the North Quarter corner of Section 8 and a distance of 30.00 chains (1980.00 feet) was measured to the Northeast corner of Section 6. Set reference ties as follows:

10" Basswood	S 20 degrees W	25 links (16.50 feet)
9" White Birch	N 82 degrees W	18 links (11.88 feet)
10" White Birch	N 46 degrees E	35 links (23.1 feet)
7" Butternut	S 44 degrees E	28 links (18.48 feet)

Silas Barnard, Deputy Surveyor

**February 7th, 2018**

In January of 2018, Bolton & Menk, Inc. began working on a project within Sections 6, 7, 8 and 18, Township 40N, Range 24W. A subdivision of these sections would be required to complete the project. Field Crews started the project by searching for evidence in the field including occupation lines, GLO Bearing Tree ties and GLO feature calls from the running notes. This evidence was then analyzed in by Russell Halverson (LS#41813) and Zachary Zetah (LS#52694) to create new search positions for the original corners.

In December of 2013, E.G. Rud, LS#9808, filed a certificate of location at the Southeast corner of Section 18. The corner certificate states "No evidence could be found for the post or bearing trees. No records of any previous surveys could be found at Kanabec County Office. Therefore we set this corner by double proportionate measurement between the Northeast corner of Section 20 and the Northwest corner of Section 19 and between the Southeast corner of Section 19 and the Northeast corner of Section 6".

After all evidence and history research was examined, Bolton and Menk determined this corner to be set using the Lost Method. We had high hopes of recovering enough evidence to support an obliterated position, but not enough facts were present to persuade us one direction or another. The North and East Line of Section 18, the North and East line of Section 7, the East line of Section 6, and the North line of Section 8 were set with the lost method using Single and Double proportionate measurements. This is the same conclusion that E.G. Rud came to in 2013 when the Southeast corner of Section 18 was set.

The controlling corners to determine the Northeast corner of Section 7 are the Northeast corner of Section 8 to the Northwest corner of Section 7 and the Northeast corner of Section 6 and the Southeast corner of Section 18.