

CERTIFICATE OF LOCATION OF GOVERNMENT CORNER

NORTH QUARTER Corner of Section 17, Township 40, Range 24, 4TH P.M.
STATE OF MINNESOTA, County of KANABEC

At the corner location shown on the sketch:
ON 11/25/2013 FOUND A KANABEC COUNTY MONUMENT.

Kanabec County U.S. Survey Feet Coordinates
NAD 1983, HARN 1996 Adjustment
Obtained by RTK GPS Observation

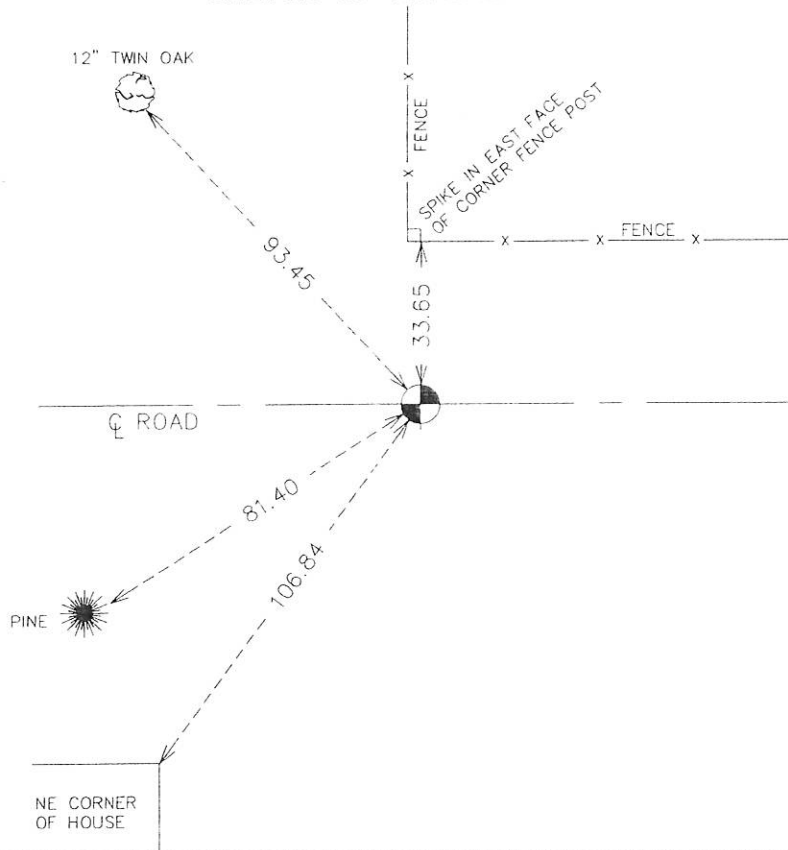
Northing= 184954.53

Easting= 382961.89

Note: NAD 1983, HARN 1996 Adjustment
coordinates are NOT compatible with
NAD 1983 coordinates

Note: 1 Meter=3937/1200 U.S. Survey Feet

SKETCH OF REFERENCE TIES



Statement of evidence relative to this corner location is on back of page.

I hereby certify that this document and the data contained herein was prepared by me or under my direct supervision.

Ewert J. Rud
Signature

12-23-13
Date

Registration No. 9808

Land Surveyor, [] Professional Engineer
[] County Surveyor, [] County Engineer

OFFICE OF THE COUNTY RECORDER

County of _____

I hereby certify that this document was filed in the County Recorder's office at _____ M. on the _____ day of _____ A.D., 20 _____

County Recorder _____

BY _____ Deputy

DOCUMENT NO. _____

From Tie Sheet 617

All of the original bearing trees are now gone.

There is no resurvey data on file for this corner.

In October of 1981, MB Rude ran a survey to locate lines of occupation along the south and east line of Section 8.

This corner is at an east-west road and fence lines north and south.

On October 8, 1981, they made an excavation with the County backhoe at this corner. The excavation was 15 feet square, 3 feet deep, 1 foot into the natural ground. No evidence was found in the excavation.

The center line of the east-west road and fence line north and south has been accepted as the corner location by the area residents and he accepted this location as the best available evidence of the original corner location.

On November 25, 2013 E.G. Rud and Sons found a cast aluminum monument at this corner in good condition, one new tie was taken and established Kanabec County Coordinates on this position.