

# CERTIFICATE OF LOCATION OF GOVERNMENT CORNER

N 1/4

Corner of Section 20, Township 40, Range 24, 4<sup>TH</sup> P.M.

STATE OF MINNESOTA, County of KANABEC

At the corner location shown on the sketch:

SET- 4' LONG I.P. AND ALUMINUM  
CAP. WITH FENCE POST.  
on north side

12-18-13

Kanabec County U.S. Survey Feet Coordinates  
NAD 1983, HARN 1996 Adjustment  
Obtained by RTK GPS Observation

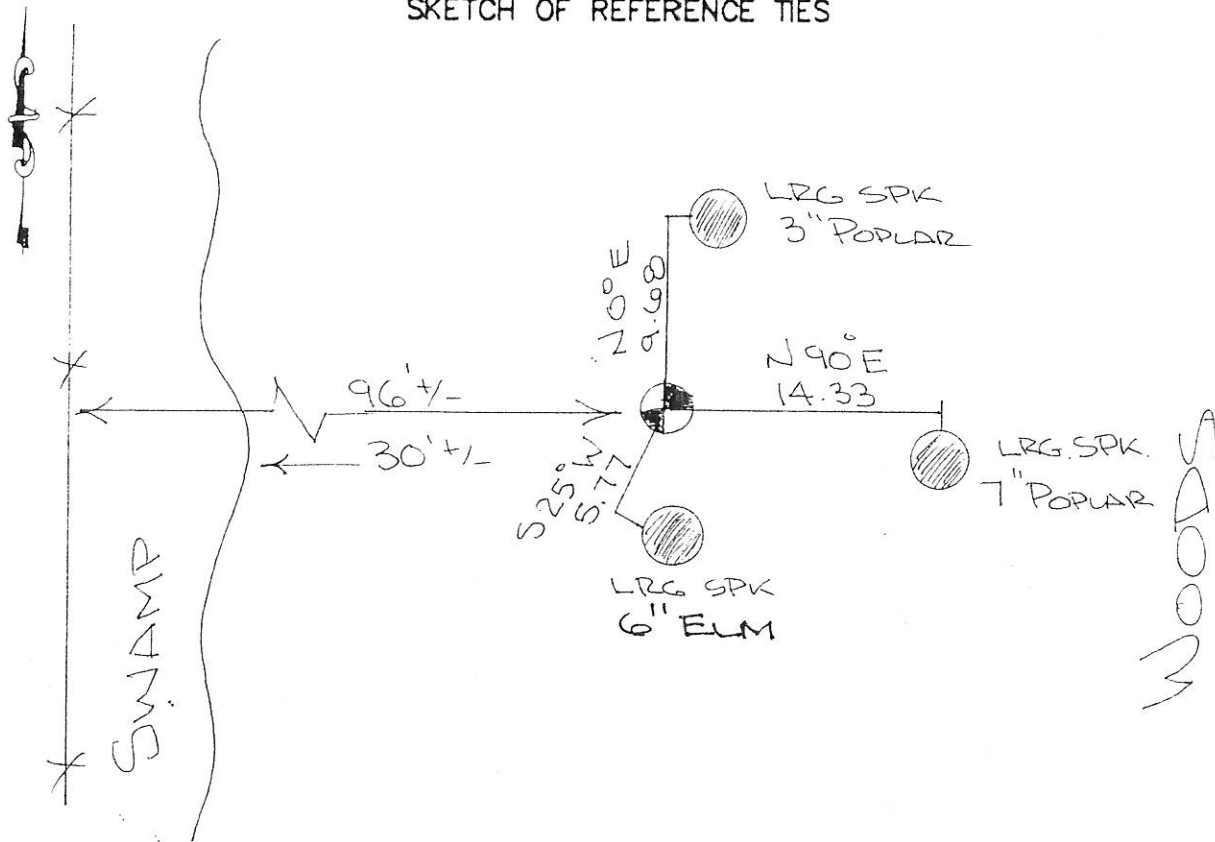
Northing= 179606.099

Eastings= 382993.369

Note: NAD 1983, HARN 1996 Adjustment  
coordinates are NOT compatible with  
NAD 1983 coordinates

Note: 1 Meter=3937/1200 U.S. Survey Feet

## SKETCH OF REFERENCE TIES



Statement of evidence relative to this corner location is on back of page.

I hereby certify that this document and the data contained herein was prepared by me or under my direct supervision.

Ernest J. Red  
Signature

Dec 23, 2013  
Date

Registration No. 9808

- Land Surveyor,       Professional Engineer
- County Surveyor,     County Engineer

## OFFICE OF THE COUNTY RECORDER

County of \_\_\_\_\_

I hereby certify that this document was filed in the County Recorder's office at \_\_\_\_\_ M. on the \_\_\_\_\_ day of \_\_\_\_\_ A.D., 20\_\_\_\_

County Recorder \_\_\_\_\_

BY \_\_\_\_\_ Deputy

DOCUMENT NO. \_\_\_\_\_

The original Government post was set on October 20, 1855 by Deputy Surveyor Silas Barnard and 2 bearing trees noted as:

6" Tamarack bearing South 50 degrees West at 50 links

5" Tamarack bearing South 50 degrees West at 45 links

No evidence could be found for the corner or bearing trees. No records of previous survey could be found at the Kanabec County Offices. This corner falls in a wooded area 30 feet east of a swamp. There is an old fence 96 feet more or less west of this position. We set a four foot pipe with an aluminum cap, took ties and established Kanabec County Coordinates on this position. This corner was set on line and equidistant between the northeast and northwest corners of Section 20.