

CERTIFICATE OF LOCATION OF GOVERNMENT CORNER

NE. Corner of Section 19, Township 40, Range 24, 4TH P.M.

STATE OF MINNESOTA, County of KANABEC

At the corner location shown on the sketch:

SET - 4' LONG IP AND ALUMINUM
CAP WITH FENCE POST

12-18-13

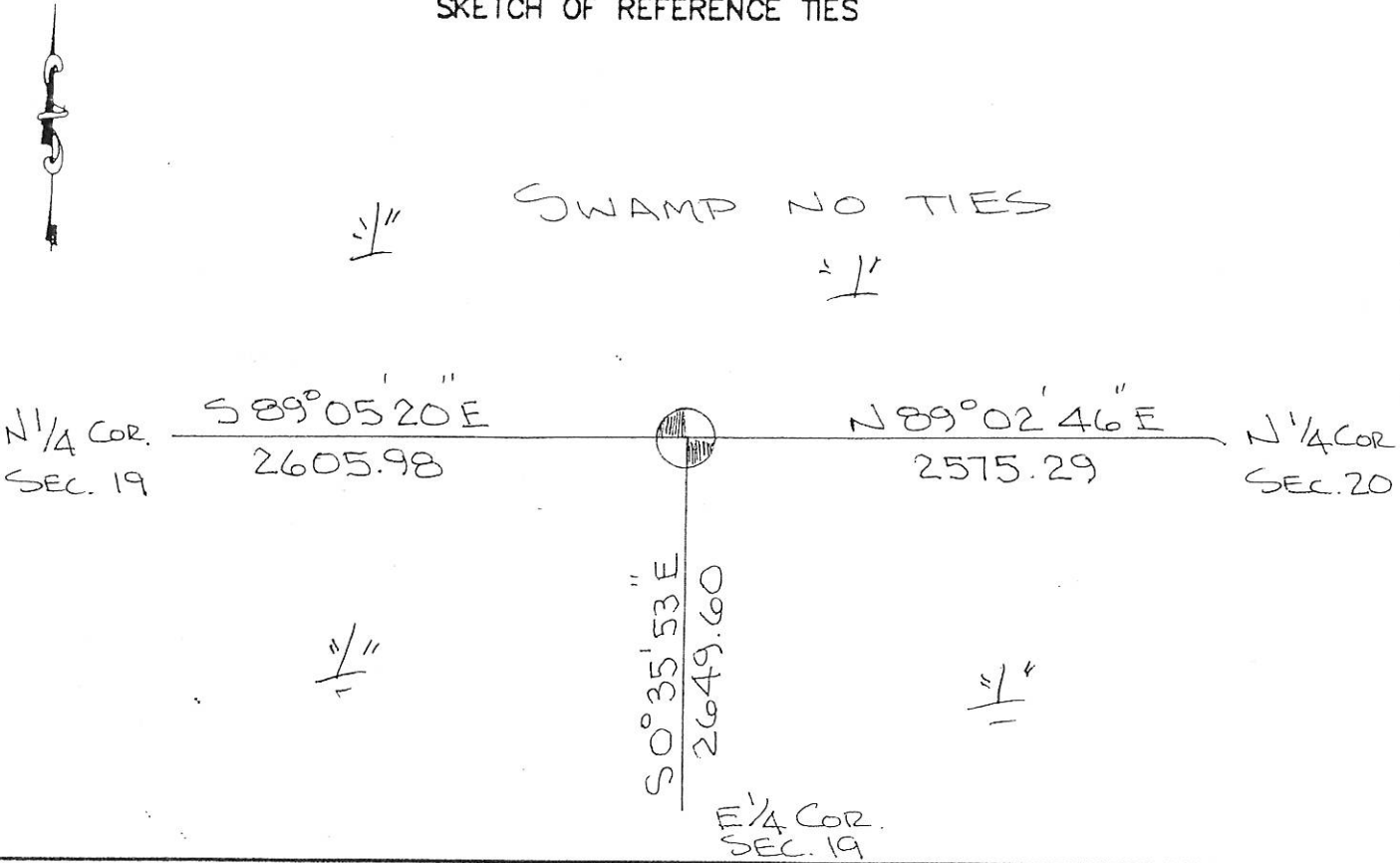
Kanabec County U.S. Survey Feet Coordinates
NAD 1983, HARN 1996 Adjustment
Obtained by RTK GPS Observation

Northing= 179563.230
Easting= 380358.440

Note: NAD 1983, HARN 1996 Adjustment
coordinates are NOT compatible with
NAD 1983 coordinates

Note: 1 Meter=3937/1200 U.S. Survey Feet

SKETCH OF REFERENCE TIES



Statement of evidence relative to this corner location is on back of page.

I hereby certify that this document and the data contained herein was prepared by me or under my direct supervision.

Ernest J. Reed Signature Dec 23, 2013 Date

Registration No. 9808

- Land Surveyor, Professional Engineer
- County Surveyor, County Engineer

OFFICE OF THE COUNTY RECORDER

County of _____

I hereby certify that this document was filed in the County Recorder's office at _____ M. on the

_____ day of _____ A.D., 20__

County Recorder _____

BY _____ Deputy

DOCUMENT NO. _____

The original Government post was set on October 20, 1855 by Deputy Surveyor Silas Barnard and 4 bearing trees noted as:

10" Elm bearing South 60 degrees at 45 links

8" Black Ash bearing North 80 degrees west at 65 links

12" Elm bearing South 81 degrees West at 95 links

Black Ash bearing North 62 degrees East at 108 links

No evidence could be found for the post or bearing trees.

No records of any previous surveys could be found at Kanabec County Offices.

Therefore we set this corner by double proportionate measurements between the Northeast corner of Section 20 and the Northwest corner of Section 19 and between the Southeast corner of Section 19 and the Northeast corner of Section 6. A four foot pipe with an aluminum cap was set. This corner falls in a swamp with no ties available. A six foot fence post was set and Kanabec County Coordinates established on the monument.