

CERTIFICATE OF LOCATION OF GOVERNMENT CORNER

E 1/4 Corner of Section 19, Township 40, Range 24, 4TH P.M.

STATE OF MINNESOTA, County of KANABEC

At the corner location shown on the sketch:

SET - 4' LONG IP AND ALUMINUM
CAP WITH FENCE POST.

12-18-13

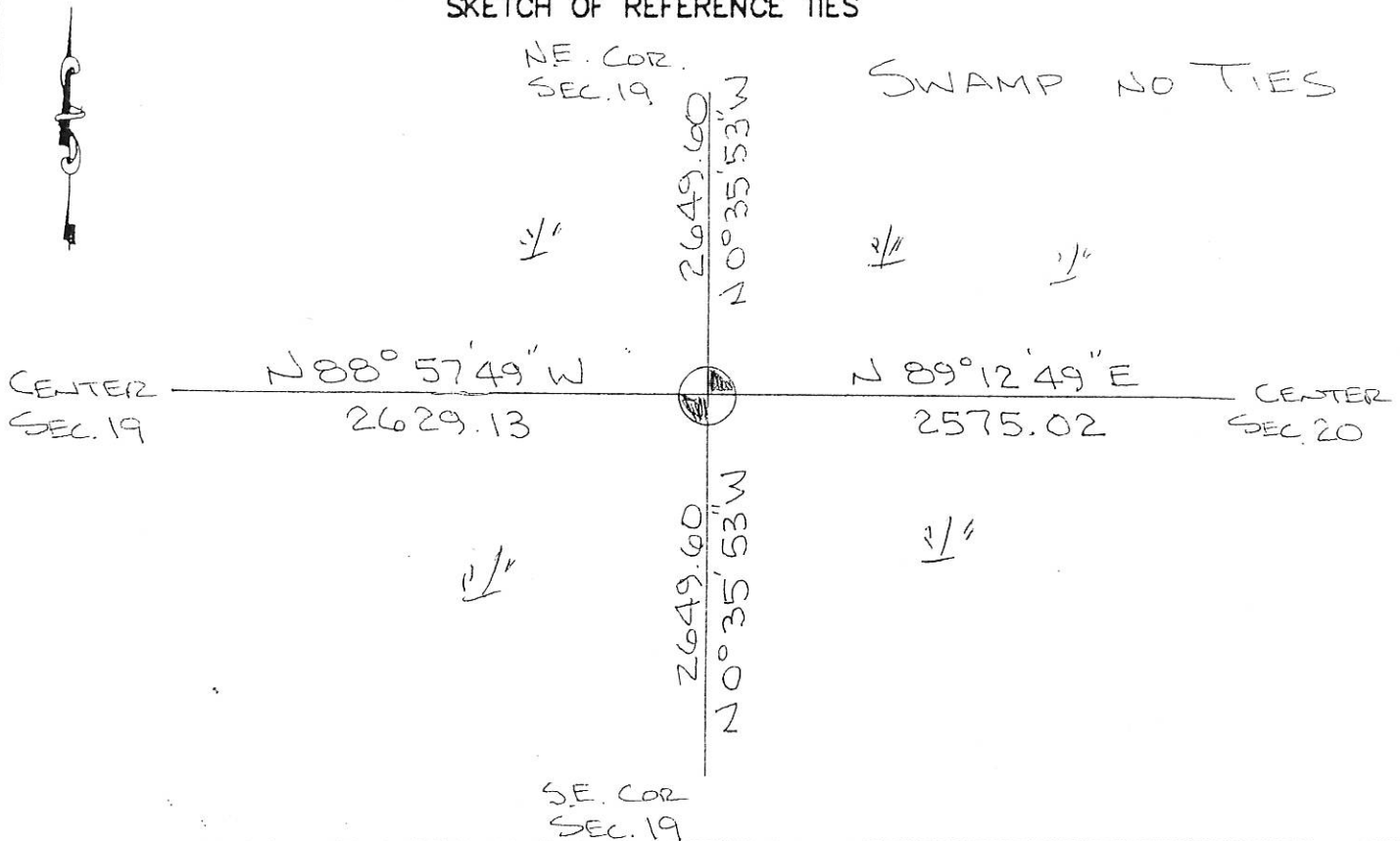
Kanabec County U.S. Survey Feet Coordinates
NAD 1983, HARN 1996 Adjustment
Obtained by RTK GPS Observation

Northing= 176913.780
Easting= 380386.100

Note: NAD 1983, HARN 1996 Adjustment
coordinates are NOT compatible with
NAD 1983 coordinates

Note: 1 Meter=3937/1200 U.S. Survey Feet

SKETCH OF REFERENCE TIES



Statement of evidence relative to this corner location is on back of page.

I hereby certify that this document and the data contained herein was prepared by me or under my direct supervision.

Ernest J. Red
Signature

12-23-2013
Date

Registration No. 9808

- Land Surveyor, Professional Engineer
- County Surveyor, County Engineer

OFFICE OF THE COUNTY RECORDER

County of _____

I hereby certify that this document was filed in the County Recorder's office at _____ M. on the

_____ day of _____ A.D., 20__

County Recorder _____

BY _____ Deputy

DOCUMENT NO. _____

The original Government post was set on October 20, 1855 by Deputy Surveyor Silas Barnard and 2 bearing trees noted as:

10" Tamarack bearing South 10 degrees East at 8 links

8" Tamarack bearing West at 10 links

No evidence could be found for the corner or bearing trees.

No records of any surveys could be found at the Kanabec County offices.

Therefore we set this corner on line and equidistant between the Northeast and Southeast corners of Section 19. This corner falls in swamp with no ties available. A four foot pipe was set with an aluminum cap. A 6 foot steel fence post was set alongside monument.