

# CERTIFICATE OF LOCATION OF GOVERNMENT CORNER

NORTH QUARTER Corner of Section 29, Township 40, Range 24, 4TH P.M.  
STATE OF MINNESOTA, County of KANABEC

At the corner location shown on the sketch:  
ON 11/25/2013 SET A PK NAIL IN BITUMINOUS.

Kanabec County U.S. Survey Feet Coordinates  
NAD 1983, HARN 1996 Adjustment  
Obtained by RTK GPS Observation

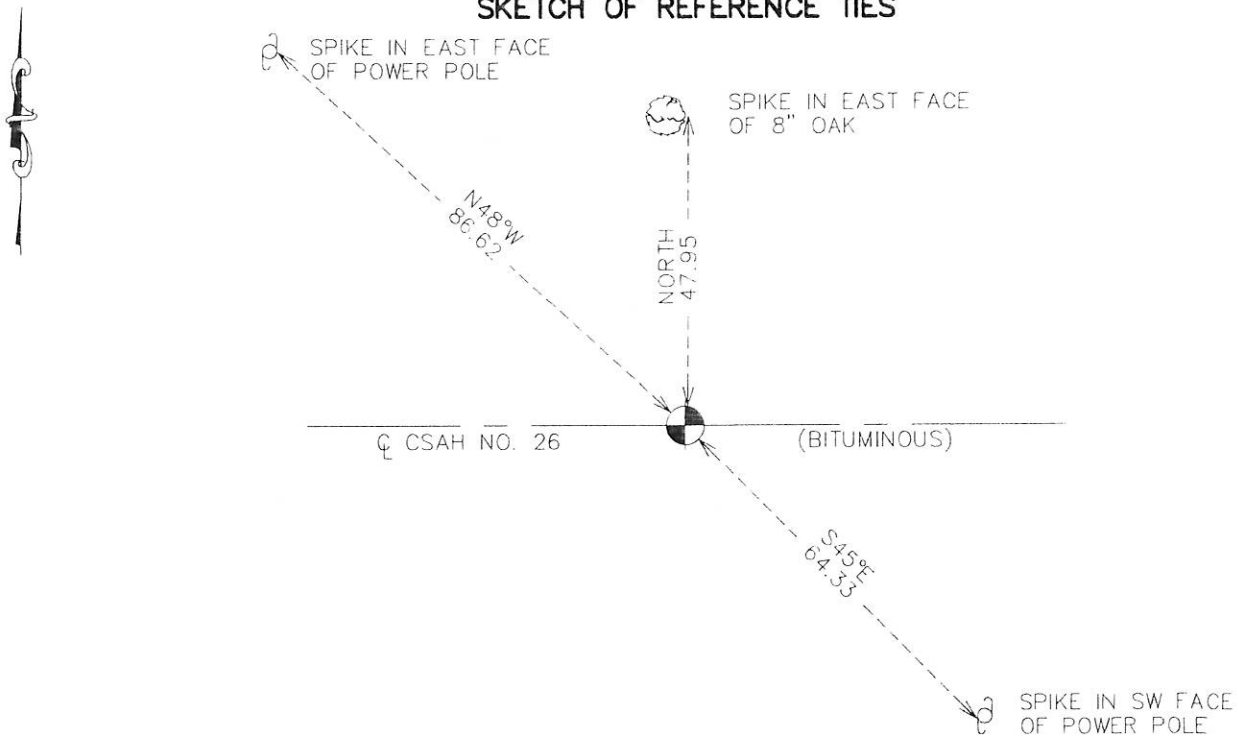
Northing= 174290.80

Easting= 382988.40

Note: NAD 1983, HARN 1996 Adjustment  
coordinates are NOT compatible with  
NAD 1983 coordinates

Note: 1 Meter=3937/1200 U.S. Survey Feet

### SKETCH OF REFERENCE TIES



Statement of evidence relative to this corner location is on back of page.

I hereby certify that this document and the data contained herein was prepared by me or under my direct supervision.

*[Signature]*  
Signature

12-23-13  
Date

Registration No. 9808

Land Surveyor,  Professional Engineer

County Surveyor,  County Engineer

### OFFICE OF THE COUNTY RECORDER

County of \_\_\_\_\_

I hereby certify that this document was filed in the County Recorder's office at \_\_\_\_\_ M. on the \_\_\_\_\_ day of \_\_\_\_\_ A.D., 20 \_\_\_\_\_

County Recorder \_\_\_\_\_

BY \_\_\_\_\_ Deputy

BY \_\_\_\_\_ Deputy

DOCUMENT NO. \_\_\_\_\_

From Tie Sheet 649

All of the original bearing trees are now gone.

In 1901, John Nelson, County Surveyor, made a survey along the north line of Section 28 and 29 for a road. This survey shows a straight line from the northeast corner to the northwest corner of Section 28 and Section 29.

In July, 1982, MB Rude ran a survey along the north line of Section 29 and found the existing road to be on a straight line.

There are no definite lines of occupation North or South.

The area has been cut in road construction so no excavation was made.

He set this corner by single proportional measurement between the Northeast and Northwest corner of Section 29.

From Tie Sheet 649A

All reference ties were intact.

The roadway was regarded in 1994. The Kanabec County Highway Department located the section corner prior to construction and placed additional references outside of the new construction limits.

Before the roadway was paved in 1995, the corner was reestablished according to references obtained previously and placed additional references.

On November 25, 2013 E.G. Rud and Sons reestablished this corner from remaining ties and established Kanabec County Coordinates on this position.