

CERTIFICATE OF LOCATION OF GOVERNMENT CORNER

East quarter Corner of Section 30, Township 40, Range 24, 4th P.M.

STATE OF MINNESOTA, County of KANABEC

At the corner location shown on the sketch:

Set 4 foot pipe 1 foot east of old fence corner

Kanabec County U.S. Survey Feet Coordinates
NAD 1983, HARN 1996 Adjustment
Obtained by RTK GPS Observation

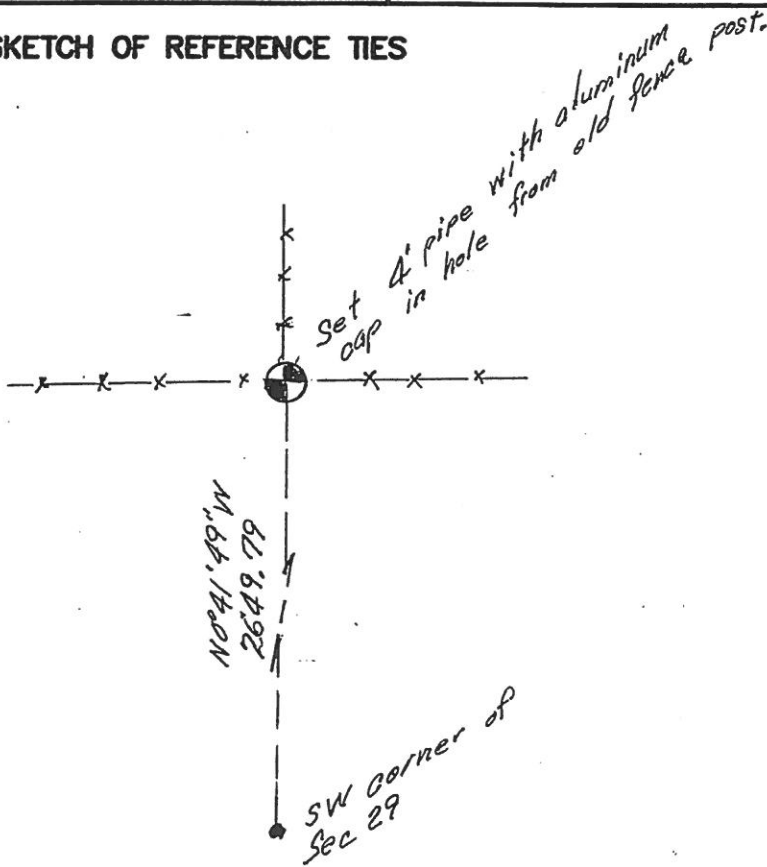
Northing= 171768.90

Easting= 380395.90

Note: NAD 1983, HARN 1996 Adjustment coordinates are NOT compatible with NAD 1983 coordinates

Note: 1 Meter=3937/1200 U.S. Survey Feet

SKETCH OF REFERENCE TIES



Statement of evidence relative to this corner location is on back of page.

I hereby certify that this document and the data contained herein was prepared by me or under my direct supervision.

[Signature]
Signature

4-28-2017
Date

Registration No. 41578

Land Surveyor, [] Professional Engineer

[] County Surveyor, [] County Engineer

OFFICE OF THE COUNTY RECORDER

County of _____

I hereby certify that this document was filed in the County Recorder's office at _____ M. on the _____ day of _____ A.D., 20____

County Recorder _____

BY _____ Deputy

DOCUMENT NO. _____

STATEMENT OF EVIDENCE

East Quarter corner, Section 30, Township 40, Range 24

4024117

The original government post was set by U.S. Deputy Surveyor, Silas Barnard on October 19th 1855 and 2 bearing trees noted as:

10" Red Maple bearing S 10^o East at 15 links

28" Pine bearing N 28^o West at 30 links

A search was made for the government corner and witness trees but could not find any visible evidence. In 1964 the DNR did a survey in Section 30 for Ann Lake and used an old fence post for this corner. We found monuments set by the DNR on East line of Southeast $\frac{1}{4}$ of Section 30 and produced it North and it fell 1 foot East of old fence corner. We set a 4 foot pipe with aluminum cap at this location and established Kanabec County Coordinates on this position. This fit fence lines running North, East and West.

This location also fit John Nelson's measurement within 0.5 feet in his survey of Section 31.