

CERTIFICATE OF LOCATION OF GOVERNMENT CORNER

North quarter Corner of Section 32, Township 40, Range 24, 4th P.M.

STATE OF MINNESOTA, County of KANABEC

At the corner location shown on the sketch:

*Set pipe with aluminum cap on
E of township road and on
line between NE & NW corners
of Sec 32*

Kanabec County U.S. Survey Feet Coordinates
NAD 1983, HARN 1996 Adjustment
Obtained by RTK GPS Observation

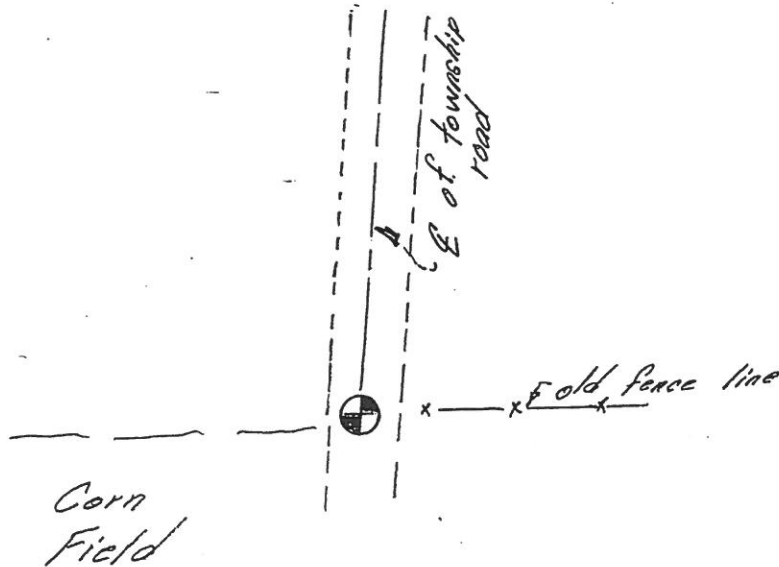
Northing= 169096.78

Easting= 382998.04

Note: NAD 1983, HARN 1996 Adjustment
coordinates are NOT compatible with
NAD 1983 coordinates

Note: 1 Meter=3937/1200 U.S. Survey Feet

SKETCH OF REFERENCE TIES



Statement of evidence relative to this corner location is on back of page.

I hereby certify that this document and the data contained herein was prepared by me or under my direct supervision.



4-28-2017
Date

Registration No. 41578

Land Surveyor, Professional Engineer

County Surveyor, County Engineer

OFFICE OF THE COUNTY RECORDER

County of _____

I hereby certify that this document was filed in the County Recorder's office at _____ M. on the

_____ day of _____ A.D., 20__

County Recorder _____

BY _____ Deputy

DOCUMENT NO. _____

STATEMENT OF EVIDENCE

North Quarter Corner Section 32 Township 40 Range 24

4024115

The original government post was set by U.S. Deputy Surveyor Silas Barnard on October 19, 1855 and 2 bearing trees noted as:

8" Pine bearing North at 5 links

8" Tamarac bearing S 20° W at 10 Links

A search was made for the government corner and witness trees, but could not find any visible evidence. There is a township road running north from this corner which Vickery did a road opening survey for in April 1920. There are remnants of an old fence running East from this corner. We searched for any corners Vickery might of set, but couldn't find any. Therefore, we determined that the centerline of the north-south road and a line between the southeast and southwest corners of Section 29 was the best location of the perpetuated corner. This also fit the remnants of the old fence going east. A Kanabec County monument was set and Kanabec County coordinates were established on the monument.