

CERTIFICATE OF LOCATION OF GOVERNMENT CORNER

Northeast Corner of Section 31, Township 40, Range 24, 4th P.M.
STATE OF MINNESOTA, County of KANABEC

At the corner location shown on the sketch:

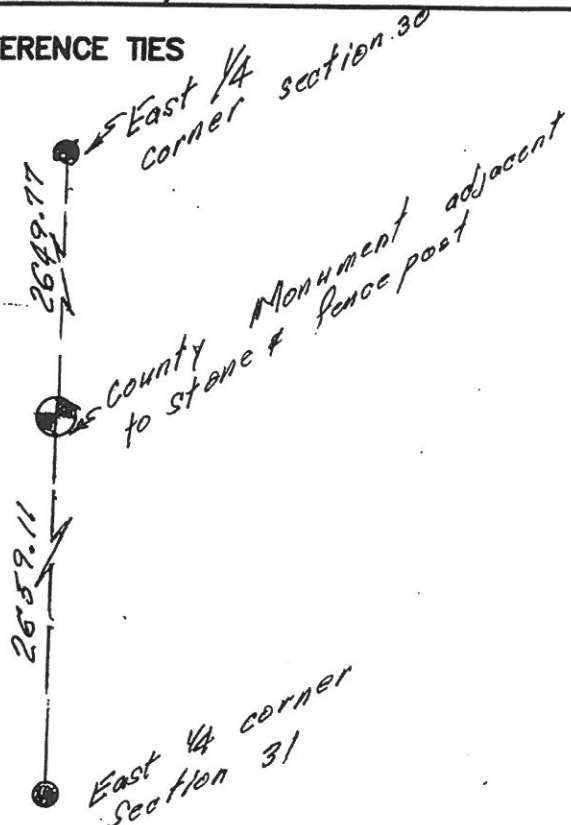
We found a Kanabec County Monument adjacent to a stone with a fence post by it

Kanabec County U.S. Survey Feet Coordinates
NAD 1983, HARN 1996 Adjustment
Obtained by RTK GPS Observation

Northing= 169119.30
Easting= 380428.14

Note: NAD 1983, HARN 1996 Adjustment coordinates are NOT compatible with NAD 1983 coordinates
Note: 1 Meter=3937/1200 U.S. Survey Feet

SKETCH OF REFERENCE TIES



Statement of evidence relative to this corner location is on back of page.

I hereby certify that this document and the data contained herein was prepared by me or under my direct supervision.

4-28-2017
Date

Registration No. 41578

Land Surveyor, Professional Engineer

County Surveyor, County Engineer

OFFICE OF THE COUNTY RECORDER

County of _____

I hereby certify that this document was filed in the County Recorder's office at _____ M. on the _____ day of _____ A.D., 20____

County Recorder _____

BY _____ Deputy

DOCUMENT NO. _____

STATEMENT OF EVIDENCE

Northeast Corner Section 31, Township 40, Range 24

4024114

The original government post was set by U.S. Deputy Surveyor, Silas Barnard on October 19th 1855 and 4 bearing trees notes as:

8" Pine bearing S 20° East at 15 links

16" Yellow Birch bearing North 50° West at 54 links

20" Pine bearing South 80° West at 20 links

24" Pine bearing North 56° East at 45 links

A search was made for the government corner and witness trees but could not find any visible evidence. However, a Kanabec County Monument was found by a fence post adjacent to a stone monument most likely set by John Nelson in March of 1911. This stone was within 0.5 feet of John Nelson's measurement to the West ¼ corner of Section 29. The distance computed to Southwest corner of Section 30 was 1 chain greater than John Nelson's measurement in survey of Section 31. This was using D.N.R.'s breakdown of Section 25, Township 40, Range 25.

We accepted this Kanabec County Monument as the perpetuated corner for the Northeast corner of Section 31 and established Kanabec County Coordinates on this position. This monument had been used by the D.N.R. in Section 30 and by Hawkinson Anderson in Section 29.