

# CERTIFICATE OF LOCATION OF GOVERNMENT CORNER

East quarter Corner of Section 31, Township 40, Range 24, 4th P.M.

STATE OF MINNESOTA, County of KANABEC

At the corner location shown on the sketch:

*Set a 1/2" iron pipe with aluminum cap in hole left by old fence corner. New fence cor is 1' west.*

Kanabec County U.S. Survey Feet Coordinates  
NAD 1983, HARN 1996 Adjustment  
Obtained by RTK GPS Observation

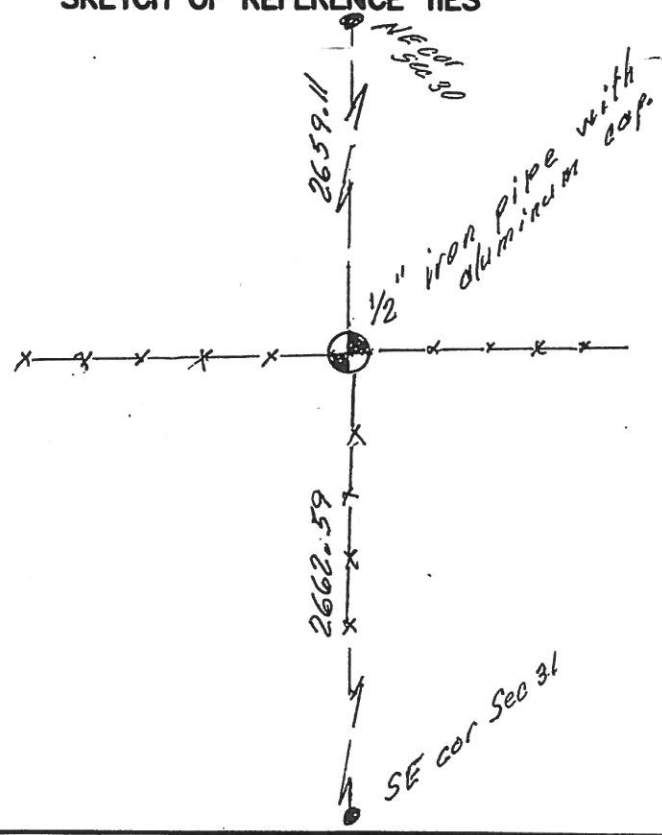
Northing= 166460.20

Easting= 380423.47

Note: NAD 1983, HARN 1996 Adjustment coordinates are NOT compatible with NAD 1983 coordinates

Note: 1 Meter=3937/1200 U.S. Survey Feet

### SKETCH OF REFERENCE TIES



Statement of evidence relative to this corner location is on back of page.

I hereby certify that this document and the data contained herein was prepared by me or under my direct supervision.

*[Signature]*  
Signature

4-28-2017  
Date

Registration No. 41578

Land Surveyor,       Professional Engineer

County Surveyor,       County Engineer

### OFFICE OF THE COUNTY RECORDER

County of \_\_\_\_\_

I hereby certify that this document was filed in the County Recorder's office at \_\_\_\_\_ M. on the \_\_\_\_\_ day of \_\_\_\_\_ A.D., 20\_\_\_\_

County Recorder \_\_\_\_\_

BY \_\_\_\_\_ Deputy

DOCUMENT NO. \_\_\_\_\_

## STATEMENT OF EVIDENCE

East Quarter corner of Section 31, Township 40, Range 24

4024113

The original post was set by U.S. Deputy Surveyor, Silas Barnard on October 19, 1855 and 2 bearing trees noted as:

6" Yellow Birch bearing North 40° West at 20 links

10" Yellow Birch bearing South 10° East at 5 links

A search was made for the government corner and witness trees, but could not find any visible evidence. In April of 2017 E.G. Rud & Sons, in doing a survey in Section 29, went to this area to try and locate a position of the corner. This corner falls on a fence corner with fences running East, West and South. We probed for this corner, but no stone could be found. In Book A1 of surveys, John Nelson recorded a survey of Section 31 on March 28<sup>th</sup>, 1911 which showed a stone being set at this location. There was a new corner post set at the fence intersections and evidence of an older fence corner 1 foot east. This older fence corner was determined to be the best evidence for the perpetuation of this corner. Therefore an iron monument was set at the location of the older fence corner and Kanabec County coordinates are established on this position. This fit within 1 foot of being equidistant between the Northeast and Southeast corner of Section 31.