

# CERTIFICATE OF LOCATION OF GOVERNMENT CORNER

NORTHEAST Corner of Section 8, Township 40, Range 24, 4TH P.M.  
STATE OF MINNESOTA, County of KANABEC

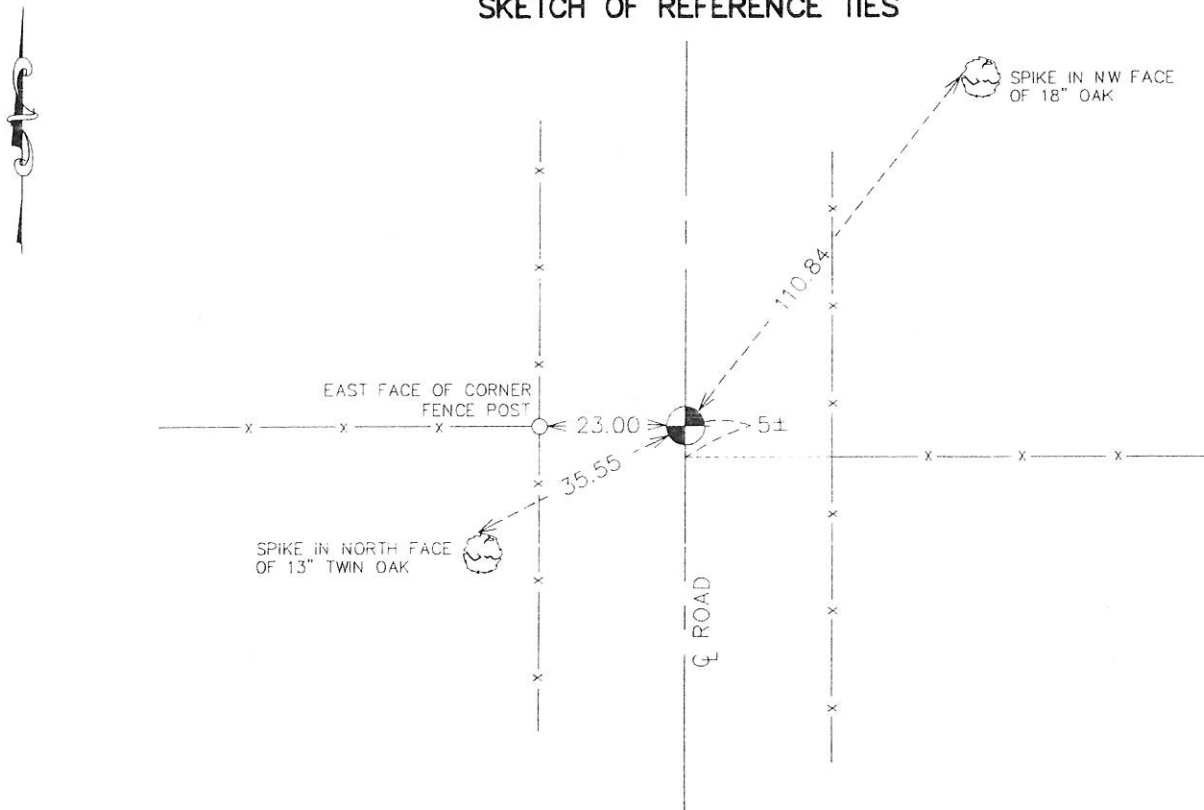
At the corner location shown on the sketch:  
ON 11/25/2013 FOUND A KANABEC COUNTY MONUMENT AND TOOK NEW TIES.

Kanabec County U.S. Survey Feet Coordinates  
NAD 1983, HARN 1996 Adjustment  
Obtained by RTK GPS Observation

Northing= 190210.73  
Easting= 385584.39

Note: NAD 1983, HARN 1996 Adjustment  
coordinates are NOT compatible with  
NAD 1983 coordinates  
Note: 1 Meter=3937/1200 U.S. Survey Feet

### SKETCH OF REFERENCE TIES



Statement of evidence relative to this corner location is on back of page.

I hereby certify that this document and the data contained herein was prepared by me or under my direct supervision.

Erick Rud                      12-23-13  
Signature                                      Date

Registration No. 9000

- Land Surveyor,             Professional Engineer
- County Surveyor,         County Engineer

### OFFICE OF THE COUNTY RECORDER

County of \_\_\_\_\_

I hereby certify that this document was filed in the County Recorder's office at \_\_\_\_\_ M. on the \_\_\_\_\_ day of \_\_\_\_\_ A.D., 20 \_\_\_\_\_

County Recorder \_\_\_\_\_

BY \_\_\_\_\_ Deputy

DOCUMENT NO. \_\_\_\_\_

From Tie Sheet 613

All of the original bearing trees are now gone.

There is a survey on file in Section 9 by John Nelson, dated 1901, which shows new ties to this corner. These ties are now gone.

This corner falls in the center line of the north-south road and fence lines east and west.

On October 8, 1981, he made an excavation with the County backhoe at this location. The ~~excavation~~<sup>excavation</sup> was 20 feet north-south, 12 feet east-west, 3 feet deep, 1 foot into natural ground. No evidence was found in the excavation.

He set this corner in the center line of the north-south road and at a proportional distance between the northeast corner of Section 5 and the east quarter corner of Section 8. This location fits a fence line west and is 5 feet north of a fence line east.

On November 25, 2013 E.G. Rud and Sons found this monument, took additional ties and established Kanabec County Coordinates on this position.