

# CERTIFICATE OF LOCATION OF GOVERNMENT CORNER

EAST QUARTER Corner of Section 8, Township 40, Range 24, 4TH P.M.  
STATE OF MINNESOTA, County of KANABEC

At the corner location shown on the sketch:  
ON 11/25/2013 FOUND A KANABEC COUNTY MONUMENT AND TOOK NEW TIES.

Kanabec County U.S. Survey Feet Coordinates  
NAD 1983, HARN 1996 Adjustment  
Obtained by RTK GPS Observation

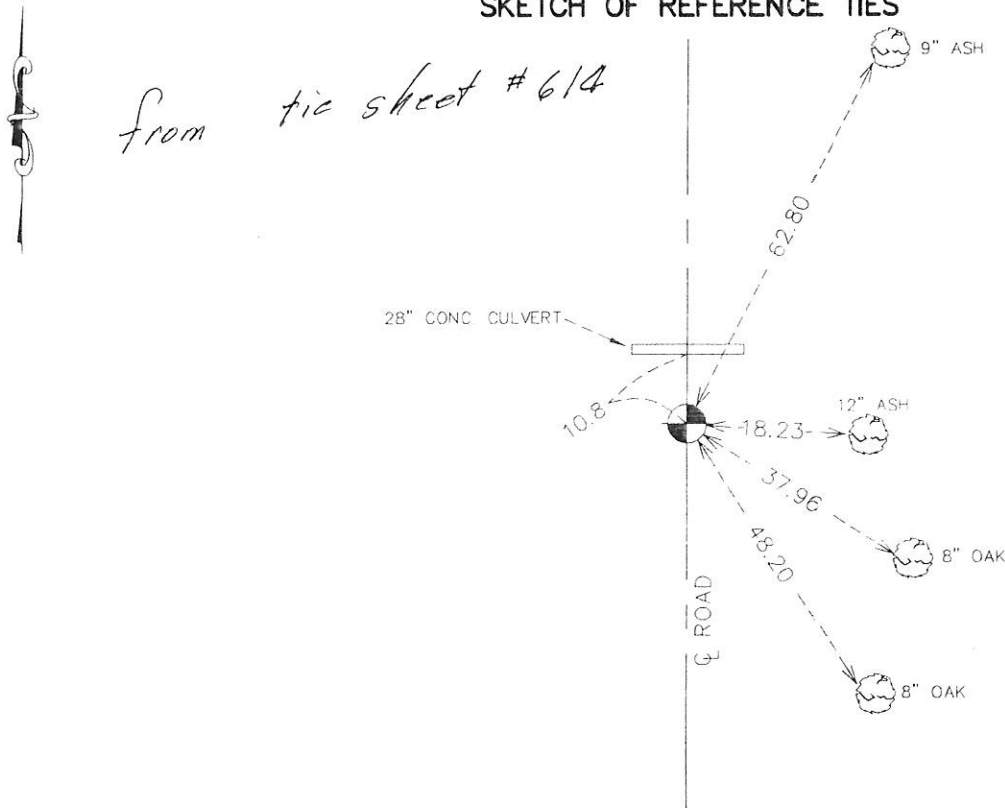
Northing= 187562.25

Easting= 385588.64

Note: NAD 1983, HARN 1996 Adjustment coordinates are NOT compatible with NAD 1983 coordinates

Note: 1 Meter=3937/1200 U.S. Survey Feet

### SKETCH OF REFERENCE TIES



Statement of evidence relative to this corner location is on back of page.

I hereby certify that this document and the data contained herein was prepared by me or under my direct supervision.

*Ernest Rud*  
Signature

12-23-13  
Date

Registration No. 9808

Land Surveyor,  Professional Engineer

County Surveyor,  County Engineer

### OFFICE OF THE COUNTY RECORDER

County of \_\_\_\_\_

I hereby certify that this document was filed in the County Recorder's office at \_\_\_\_\_ M. on the

\_\_\_\_\_ day of \_\_\_\_\_ A.D., 20 \_\_\_\_\_

County Recorder \_\_\_\_\_

BY \_\_\_\_\_ Deputy

DOCUMENT NO. \_\_\_\_\_

From Tie Sheet 614

All of the original bearing trees are now gone.

There is a survey on file in Section 9 by John Nelson, dated 1901, which shows new ties to this corner. These ties are now gone.

This corner falls on the center line of a north-south road and on a fence line west and is on the south side of a creek.

The Government Survey shows this corner on the south bank of a brook. John Nelson's survey shows this corner 7.92 feet south of a split of the west line of Section 9.

He accepted the center line of the north-south road and the fence line west extended east as the best available evidence of the original corner location. This location is in harmony with the Government Survey tie to the brook and John Nelson's survey from 1901.

On November 25, 2013 E.G. Rud and Sons found this monument and established Kanabec County Coordinates on this position.