

CERTIFICATE OF LOCATION OF GOVERNMENT CORNER

NORTH QUARTER Corner of Section 16, Township 40, Range 24, 4TH P.M.
STATE OF MINNESOTA, County of KANABEC

At the corner location shown on the sketch:
ON 11/25/2013 FOUND A KANABEC COUNTY MONUMENT AND TOOK NEW TIES.

Kanabec County U.S. Survey Feet Coordinates
NAD 1983, HARN 1996 Adjustment
Obtained by RTK GPS Observation

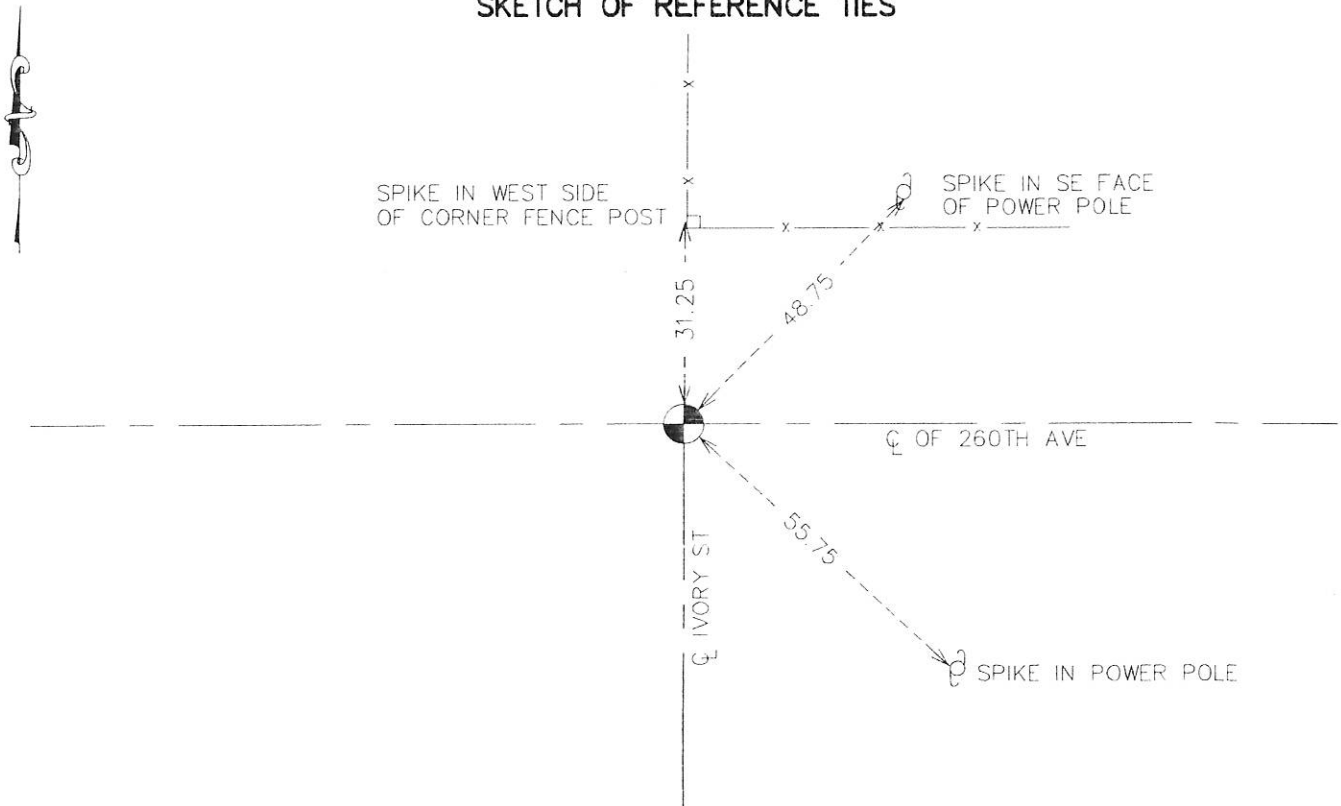
Northing= 184934.70

Easting= 388230.74

Note: NAD 1983, HARN 1996 Adjustment coordinates are NOT compatible with NAD 1983 coordinates

Note: 1 Meter=3937/1200 U.S. Survey Feet

SKETCH OF REFERENCE TIES



Statement of evidence relative to this corner location is on back of page.

I hereby certify that this document and the data contained herein was prepared by me or under my direct supervision.

Cornel Hrud
Signature

12-23-13
Date

Registration No. 9808

Land Surveyor, [] Professional Engineer

[] County Surveyor, [] County Engineer

OFFICE OF THE COUNTY RECORDER

County of _____

I hereby certify that this document was filed in the County Recorder's office at _____ M. on the _____ day of _____ A.D., 20____

_____ day of _____ A.D., 20____

County Recorder _____

BY _____ Deputy

DOCUMENT NO. _____

North Quarter Corner Section 16

4024108

From Tie Sheet 358

In 1975 MB Rude set monument from a Sandstone marked x found in excavation which was being used for the corner. He didn't know who set this stone but John Nelson said he reestablished the corner in 1901.

On November 25, 2013 E.G. Rud and Sons found this monument, took additional ties and established Kanabec County Coordinates on this corner.