

CERTIFICATE OF LOCATION OF GOVERNMENT CORNER

NORTHEAST Corner of Section 17, Township 40, Range 24, 4TH P.M.
 STATE OF MINNESOTA, County of KANABEC

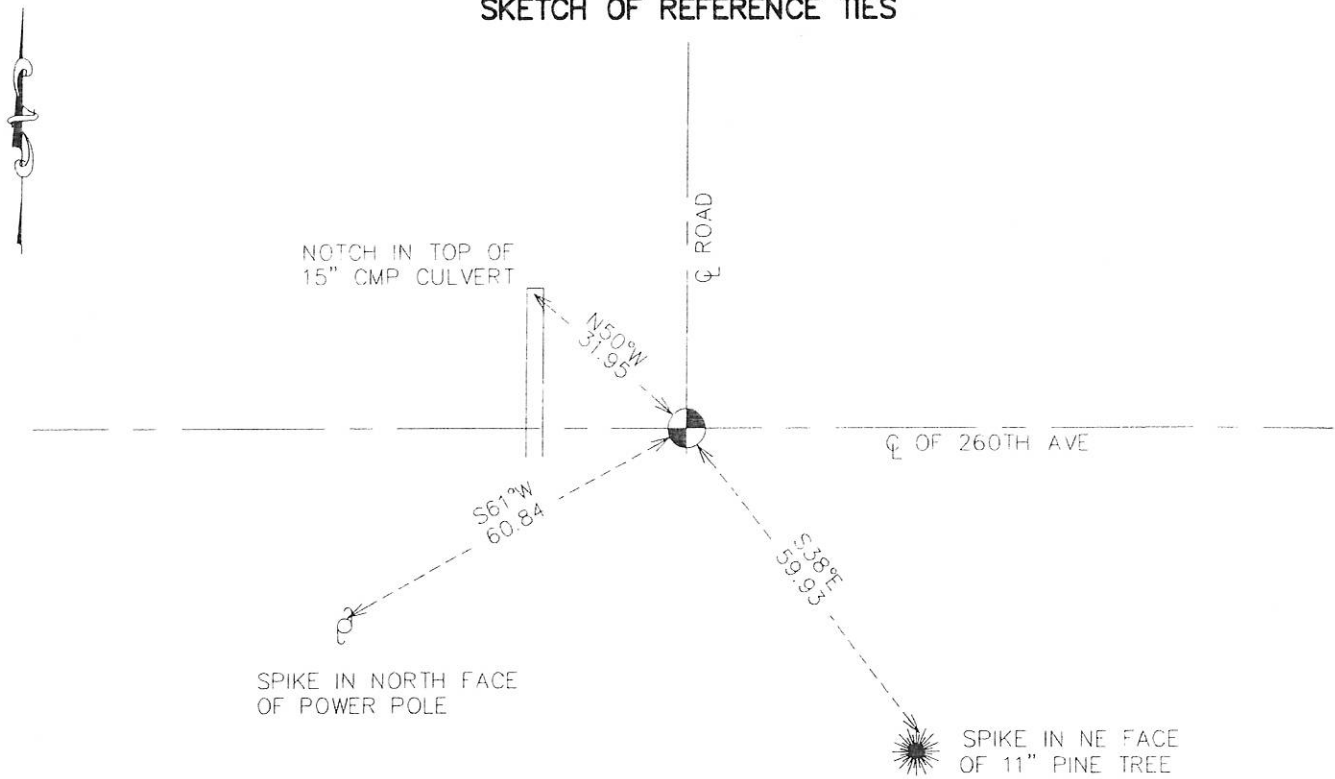
At the corner location shown on the sketch:
 ON 11/25/2013 FOUND A KANABEC COUNTY MONUMENT AND TOOK NEW TIES.

Kanabec County U.S. Survey Feet Coordinates
 NAD 1983, HARN 1996 Adjustment
 Obtained by RTK GPS Observation

Northing= 184930.70
 Easting= 385585.64

Note: NAD 1983, HARN 1996 Adjustment coordinates are NOT compatible with NAD 1983 coordinates
 Note: 1 Meter=3937/1200 U.S. Survey Feet

SKETCH OF REFERENCE TIES



Statement of evidence relative to this corner location is on back of page.

I hereby certify that this document and the data contained herein was prepared by me or under my direct supervision.

Ernest Rud
 Signature

12-23-13
 Date

Registration No. 9808

- Land Surveyor, Professional Engineer
 County Surveyor, County Engineer

OFFICE OF THE COUNTY RECORDER

County of _____

I hereby certify that this document was filed in the County Recorder's office at _____ M. on the _____ day of _____ A.D., 20____

County Recorder _____

BY _____ Deputy

DOCUMENT NO. _____

From Tie Sheet 615

All of the original bearing trees are now gone.

There is a survey on file in Section 9 by John Nelson, dated 1901, which shows new ties to this corner. These ties are now gone.

This corner falls at the intersection of roads east-west and north and old tree and fence line south.

On October 8th of 1981, MB Rude made an excavation with the County Backhoe at this location. The excavation was 15 feet square, 4 feet deep, 1 foot into the natural ground. No evidence was found in the excavation.

The center line intersection of roads and the old occupation line south has been accepted by the area residents as the corner and he accepted this location as the best available evidence of the original corner.

On November 25, 2013 E.G. Rud and Sons found a cast aluminum monument, took new ties and established Kanabec County Coordinates on this location.