

CERTIFICATE OF LOCATION OF GOVERNMENT CORNER

EAST QUARTER Corner of Section 17, Township 40, Range 24, 4TH P.M.
 STATE OF MINNESOTA, County of KANABEC

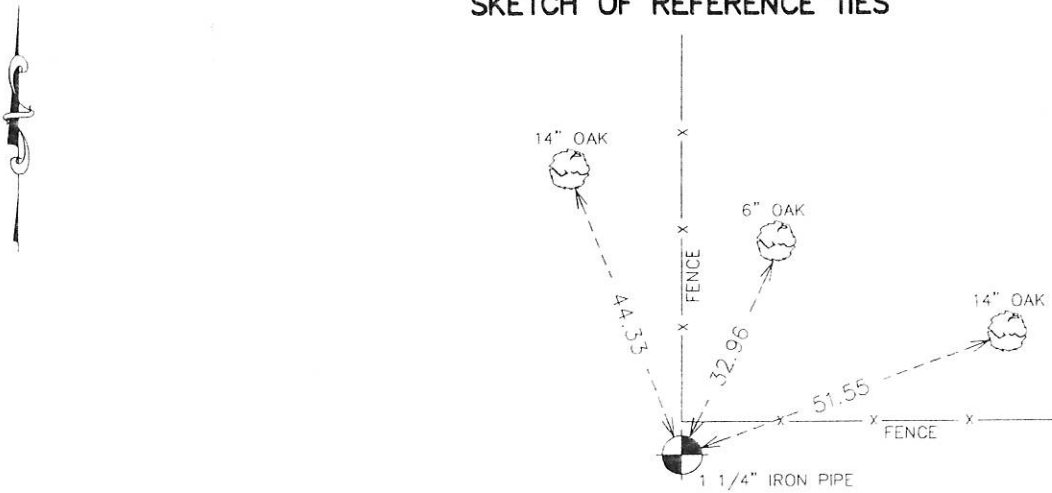
At the corner location shown on the sketch:
 ON 11/25/2013 FOUND A 1 1/4" PIPE

Kanabec County U.S. Survey Feet Coordinates
 NAD 1983, HARN 1996 Adjustment
 Obtained by RTK GPS Observation

Northing= 182301.04
 Easting= 385554.87

Note: NAD 1983, HARN 1996 Adjustment
 coordinates are NOT compatible with
 NAD 1983 coordinates
 Note: 1 Meter=3937/1200 U.S. Survey Feet

SKETCH OF REFERENCE TIES



Statement of evidence relative to this corner location is on back of page.

I hereby certify that this document and the data contained herein was prepared by me or under my direct supervision.

Ernest J. Rud
 Signature

12-23-13
 Date

Registration No. 9808

Land Surveyor, Professional Engineer
 County Surveyor, County Engineer

OFFICE OF THE COUNTY RECORDER

County of _____

I hereby certify that this document was filed in the County Recorder's office at _____ M. on the _____ day of _____ A.D., 20__

County Recorder _____

BY _____ Deputy

DOCUMENT NO. _____

From Tie Sheet 558

All of the original bearing trees are now gone.

In 1901, John Nelson, the County Surveyor, made a re-survey of Section 16, but he did not mark any new bearing trees. In 1979, MB Rude made a re-survey of Section 16 and reset the west quarter corner at an old fence corner, fence line north and east.

This location fits well with the occupation lines at the center line of Section and with the re-survey data John Nelson's re-survey of 1901.

He accepted this as the best available evidence of the original corner location.

On November 25, 2013 E.G. Rud and Sons found this 1 ¼" pipe at fence corner and established Kanabec County Coordinates on this position.