

CERTIFICATE OF LOCATION OF GOVERNMENT CORNER

N.E. Corner of Section 20, Township 40, Range 24, 4TH P.M.

STATE OF MINNESOTA, County of KANABEC

At the corner location shown on the sketch:

FND. 18" IP #16097 AND REPAIRED
4" IP AND ALUMINUM CAP. WITH
FENCE POST.

12-18-13

Kanabec County U.S. Survey Feet Coordinates
NAD 1983, HARN 1996 Adjustment

Obtained by RTK GPS Observation

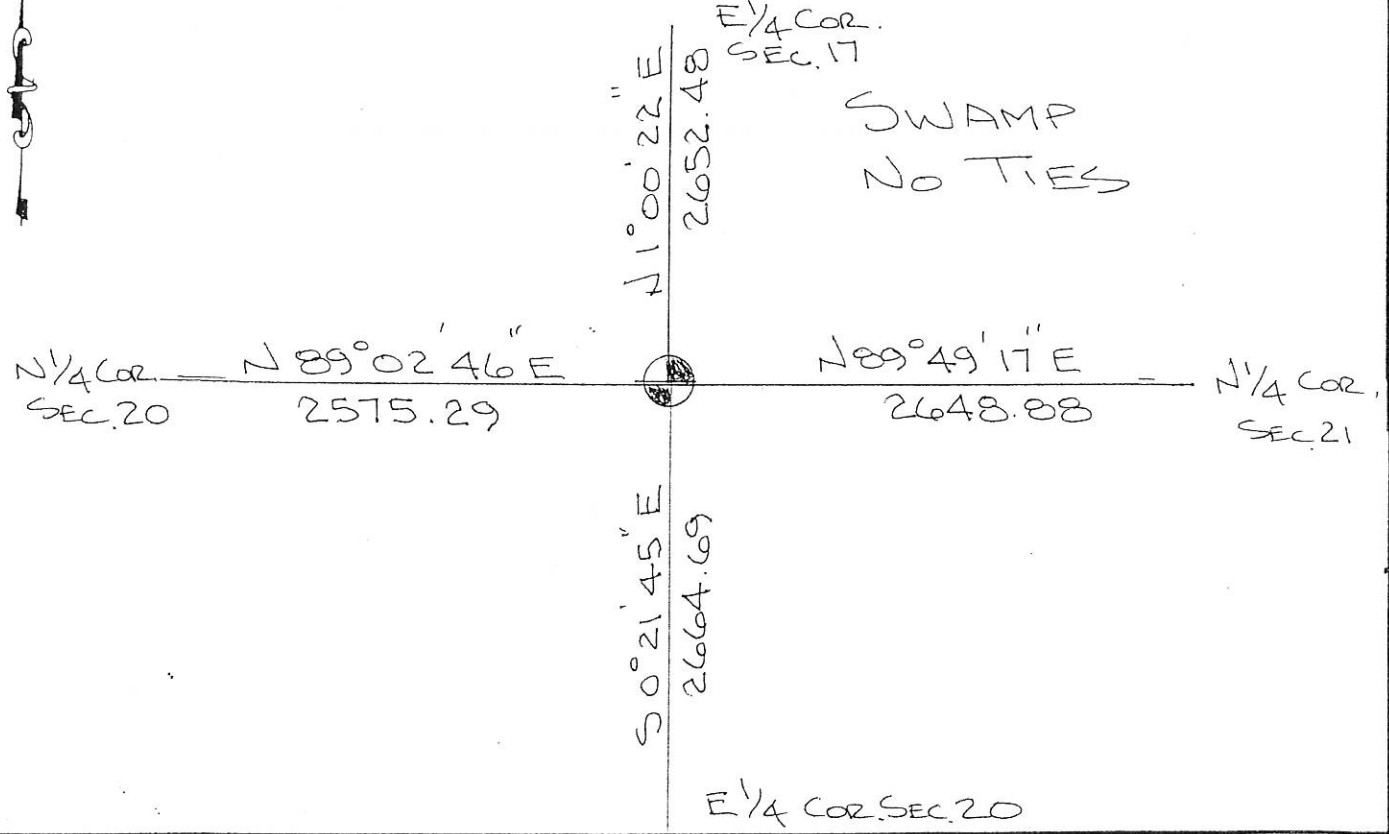
Northing = 179648.967

Easting = 385508.299

Note: NAD 1983, HARN 1996 Adjustment
coordinates are NOT compatible with
NAD 1983 coordinates

Note: 1 Meter = 3937/1200 U.S. Survey Feet

SKETCH OF REFERENCE TIES



Statement of evidence relative to this corner location is on back of page.

I hereby certify that this document and the data contained herein was prepared by me or under my direct supervision.

Ernest J. Reed Dec 23, 2013
Signature Date

Registration No. 9808

- Land Surveyor, Professional Engineer
- County Surveyor, County Engineer

OFFICE OF THE COUNTY RECORDER

County of _____

I hereby certify that this document was filed in the County Recorder's office at _____ M. on the _____ day of _____ A.D., 20____

County Recorder _____

BY _____ Deputy

DOCUMENT NO. _____

The original Government post was set on October 18th, 1855 by Deputy Surveyor Silas Barnard and 4 bearing trees noted as:

- 8" Yellow Birch bearing North 10 degrees East at 18 links
- 12" Tamarack bearing South 40 degrees West at 28 links
- 9" Yellow Birch bearing North 88 degrees West at 20 links
- 7" Yellow Birch bearing South 12 degrees East at 22 links

No evidence for the corner post or bearing trees could be found.

In book A on pages 306 & 307 John Nelson recorded a survey of Section 16 dated June 12th, 1901. He found this corner and took 3 new ties noted as:

- 18" Pine bearing South 44 degrees East at .86 chains
- 16" Tamarack bearing South 84 degrees West at .92 chains
- 24" Pine bearing North 41 Degrees West at 1.4 chains

No evidence for these bearing trees could be found.

In November 1979 M.B. Rude ran a survey around Section 16 and used the extension of fence lines south and east for an approximate position.

In November 2013 E. G. Rud & Sons surveyed around Sections 16, 17, 18, 19 & 20 to tie in existing monumentations and lines of occupation. This corner falls in a swamp and after

computing a location from M.B. Rude's survey we found a leaning steel fence post with trucks tire placed around the post. After digging out the frozen tires we found a 1/2"x18" iron pipe with cap number 16097 which is Thomas Thiesson's registration number. We checked with the State Board, found out he was from Wisconsin and retired. We googled him and he retired the

number in the late 1990's. He didn't have any recollection that he had set the corner and did not have his records. We could not track down records that retained to Kanabec County and Tom didn't think he had done any work in this area. This iron was within 1' East/West and 14' North from the position M.B. Rude had used. We set a 4 foot iron with a county aluminum cap on top in place of Theissen's iron and established Kanabec County Coordinates on this position. This fit a fence line running south at the edge of swamp.