

# CERTIFICATE OF LOCATION OF GOVERNMENT CORNER

EAST QUARTER Corner of Section 20, Township 40, Range 24, 4TH P.M.  
STATE OF MINNESOTA, County of KANABEC

At the corner location shown on the sketch:  
ON 11/21/2013 SET A 60d SPIKE FROM ONE REMAINING TIE  
DISTANCE AND ON AN EAST-WEST WITH FOUND 1/2" IRON PIPE  
LEANING WEST.

Kanabec County U.S. Survey Feet Coordinates  
NAD 1983, HARN 1996 Adjustment  
Obtained by RTK GPS Observation

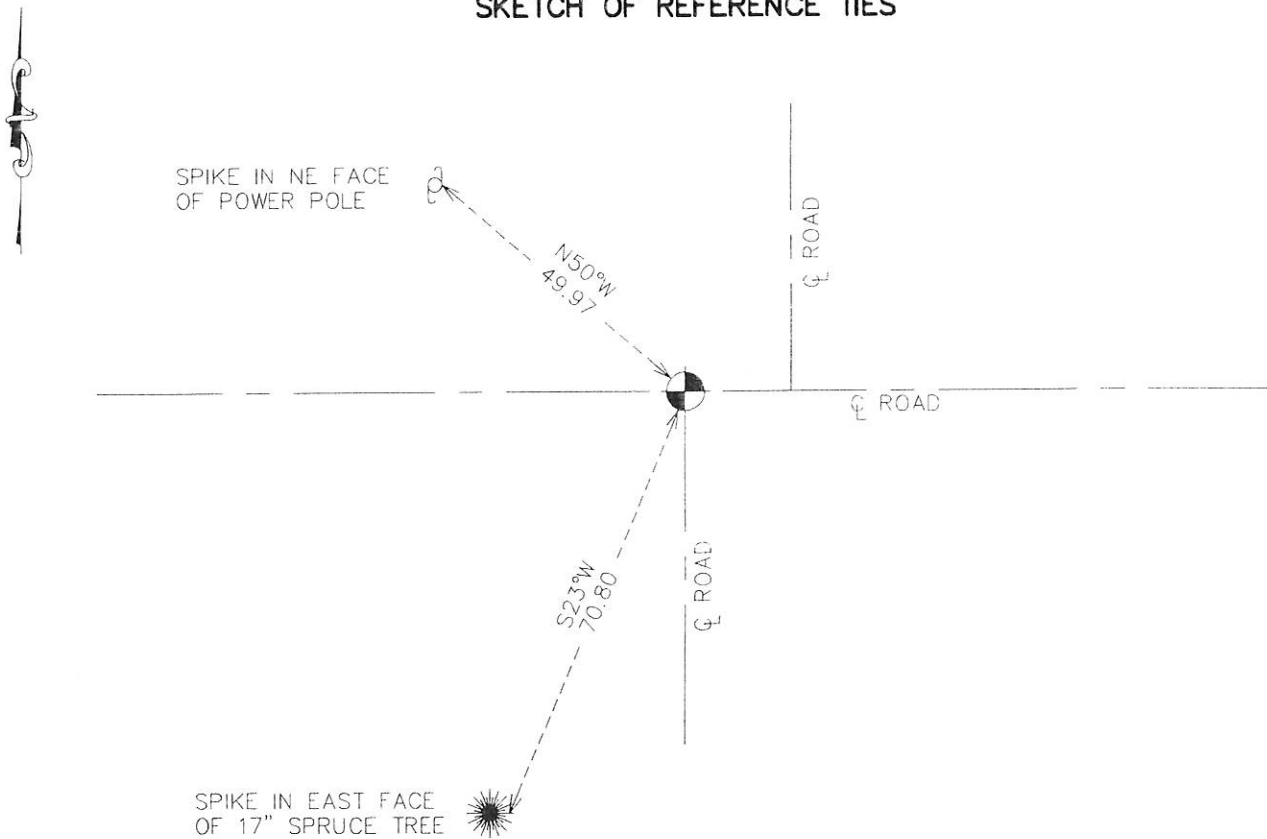
Northing= 176984.33

Easting= 385525.16

Note: NAD 1983, HARN 1996 Adjustment  
coordinates are NOT compatible with  
NAD 1983 coordinates

Note: 1 Meter=3937/1200 U.S. Survey Feet

### SKETCH OF REFERENCE TIES



Statement of evidence relative to this corner location is on back of page.

I hereby certify that this document and the data contained herein was prepared by me or under my direct supervision.

*Ernest Blund*  
Signature

12-23-13  
Date

Registration No. 98008

Land Surveyor,  Professional Engineer  
 County Surveyor,  County Engineer

### OFFICE OF THE COUNTY RECORDER

County of \_\_\_\_\_

I hereby certify that this document was filed in the County Recorder's office at \_\_\_\_\_ M. on the

\_\_\_\_\_ day of \_\_\_\_\_ A.D., 20\_\_

County Recorder \_\_\_\_\_

BY \_\_\_\_\_ Deputy

DOCUMENT NO. \_\_\_\_\_

From Tie Sheet 376

In 1975 MB Rude set monument according to a Sandstone he found in excavation which had been used for a Corner. Sandstone was marked  $\frac{1}{4}$  S. Set in 1901, by John Nelson.

Fit centerline of North-South and East-West roads.

On November 25, 2013 E.G. Rud and Sons reset a 60p spike from one remaining tie and on line east-west with a  $\frac{1}{2}$ " pipe bearing west. Took one new tie and established Kanabec County Coordinates on this position.