

CERTIFICATE OF LOCATION OF GOVERNMENT CORNER

NORTH QUARTER Corner of Section 28, Township 40, Range 24, 4TH P.M.

STATE OF MINNESOTA, County of KANABEC

At the corner location shown on the sketch:
On 04/28/2004 Set a Kanabec County Monument.

Kanabec County U.S. Survey Feet Coordinates
NAD 1983, HARN 1996 Adjustment
Obtained by RTK GPS Observation

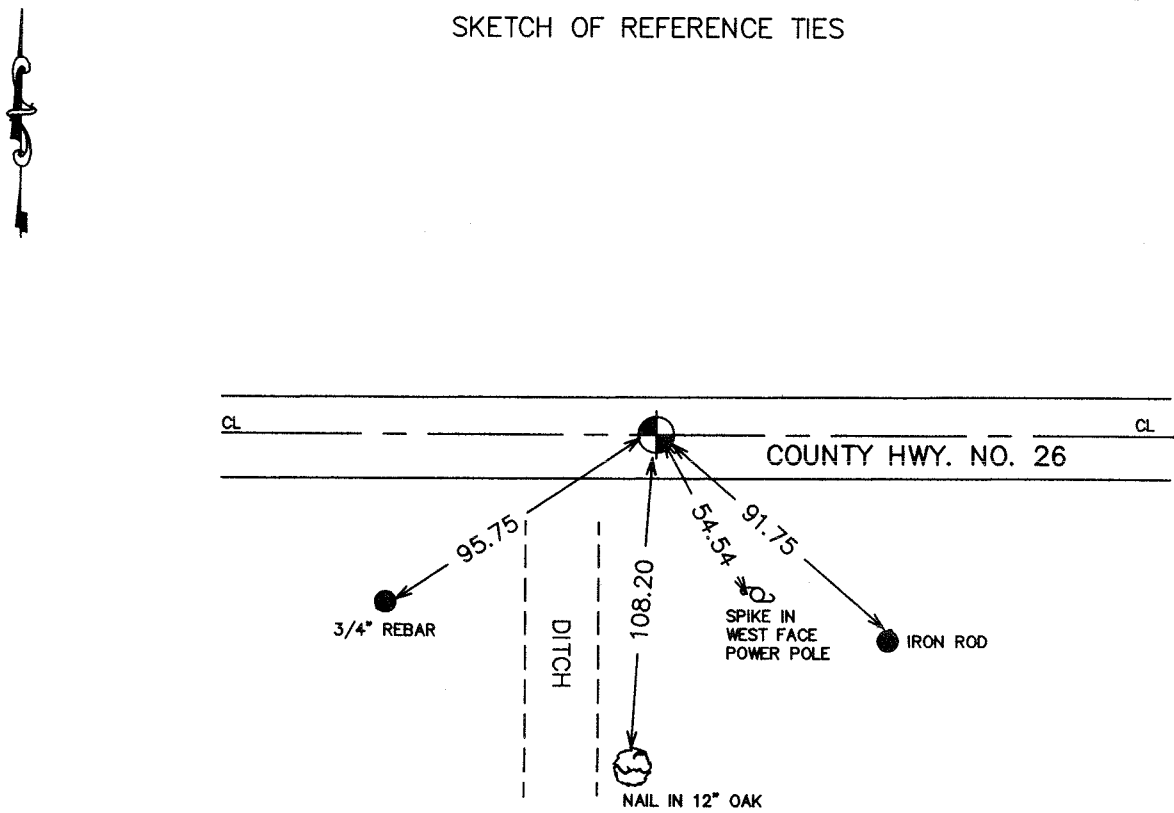
Northing= 174340.62

Easting= 388220.27

Note: NAD 1983, HARN 1996 Adjustment
coordinates are NOT compatible with
NAD 1983 coordinates

Note: 1 Meter=3937/1200 U.S. Survey Feet

SKETCH OF REFERENCE TIES



Statement of evidence relative to this corner location is on back of page.

I hereby certify that this document and the data contained herein was prepared by me or under my direct supervision.

Ernest Alud
Signature

6-07-2004
Date

Registration No. 9808

Land Surveyor, [] Professional Engineer

[] County Surveyor, [] County Engineer

OFFICE OF THE COUNTY RECORDER

County of _____

I hereby certify that this document was filed in the County Recorder's office at _____ M. on the

_____ day of _____ A.D., 20__

County Recorder _____

BY _____ Deputy

DOCUMENT NO. _____

STATEMENT OF EVIDENCE (FROM M.B. Rude)

All of the original bearing trees are now gone.

In 1901, John Nelson, County Surveyor, made a survey along the north line of Section 28 and 29 for a road. This survey shows a straight line from the Northeast Corner to the Northwest corner of Section 28 and Section 29.

In July 1982, we ran a survey from the Northeast corner of Section 28 and found an old fence line and tree line south at $1/4$ corner $16 \pm$ east of a split.

In August 1982, we made an excavation with the county backhoe at the fence line location to a point 20 feet west. The excavation was 15 feet wide, 3 feet deep, 1 foot into the natural ground.

No evidence was found in the excavation.

We set this corner on a straight line between the northeast and northwest corner of Section 28 and on the northerly extension of the old fence and tree line south extended north.

This location was accepted as the best available evidence of the original corner location and is in harmony with accepted lines of occupation and Nelson's road survey from 1901.

(County Highway Department)

The reference ties were intact.

The roadway was regraded in 1994. We located the quarter corner prior to construction and place additional references outside of the new construction limits.

Before the roadway was paved in 1995, the corner was reestablished according to references obtained previously. Additional references were also placed.

(2004)

On April 28th, 2004, E.G. Rud & Sons did a survey around Section 28. We reestablished this corner by remaining ties. We established Kanabec County Coordinates using G.P.S. equipment on this location.