

CERTIFICATE OF LOCATION OF GOVERNMENT CORNER

EAST QUARTER Corner of Section 29, Township 40, Range 24, 4TH P.M.
STATE OF MINNESOTA, County of KANABEC

At the corner location shown on the sketch:
On 04/ /2004 Found a Kanabec County Monument.

Kanabec County U.S. Survey Feet Coordinates
NAD 1983, HARN 1996 Adjustment
Obtained by RTK GPS Observation

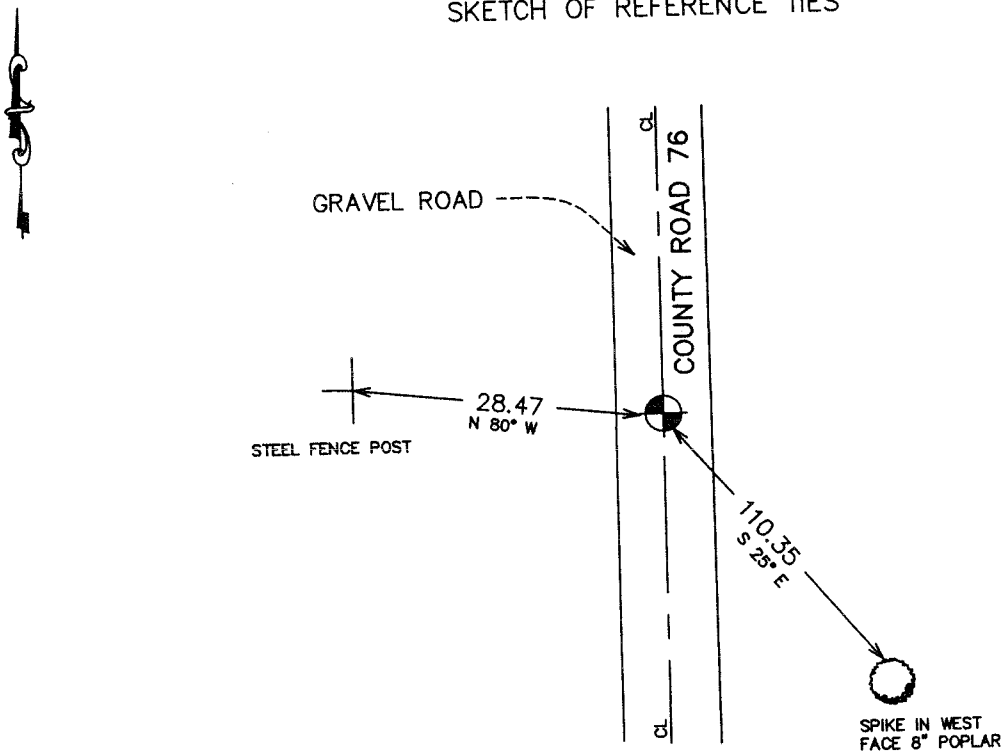
Northing= 171688.82

Easting= 385582.79

Note: NAD 1983, HARN 1996 Adjustment
coordinates are NOT compatible with
NAD 1983 coordinates

Note: 1 Meter=3937/1200 U.S. Survey Feet

SKETCH OF REFERENCE TIES



Statement of evidence relative to this corner location is on back of page.

I hereby certify that this document and the data contained herein was prepared by me or under my direct supervision.

Ernest J. Lund
Signature

6-07-2004
Date

Registration No. 9808

Land Surveyor, [] Professional Engineer

[] County Surveyor, [] County Engineer

OFFICE OF THE COUNTY RECORDER

County of _____

I hereby certify that this document was filed in the County Recorder's office at _____ M. on the _____ day of _____ A.D., 20 _____

County Recorder _____
BY _____ Deputy

DOCUMENT NO. _____

STATEMENT OF EVIDENCE

Original corner was set by Government Surveyor Silas Barnard in October 1855. The wooden post and bearing trees no longer remain.

In May of 2002, we ran a survey around Section 29 to tie in monuments and lines of occupation.

In June of 2002, we excavated an area 18 feet long, 8 feet wide, and 1 foot into the natural ground. This area was on the centerline of a gravel road and an old fence line to the west. No evidence was found in the excavation. We set the monument on the centerline of the road and extension of the fence line to the west.

In May 2004, we ran a survey around Section 28, and established Kanabec County Coordinates on this monument.