

CERTIFICATE OF LOCATION OF GOVERNMENT CORNER

NORTH QUARTER Corner of Section 33, Township 40, Range 24, 4TH P.M.

STATE OF MINNESOTA, County of KANABEC

At the corner location shown on the sketch:
On 05/ /2004 Set a Kanabec County Monument.

Kanabec County U.S. Survey Feet Coordinates
NAD 1983, HARN 1996 Adjustment
Obtained by RTK GPS Observation

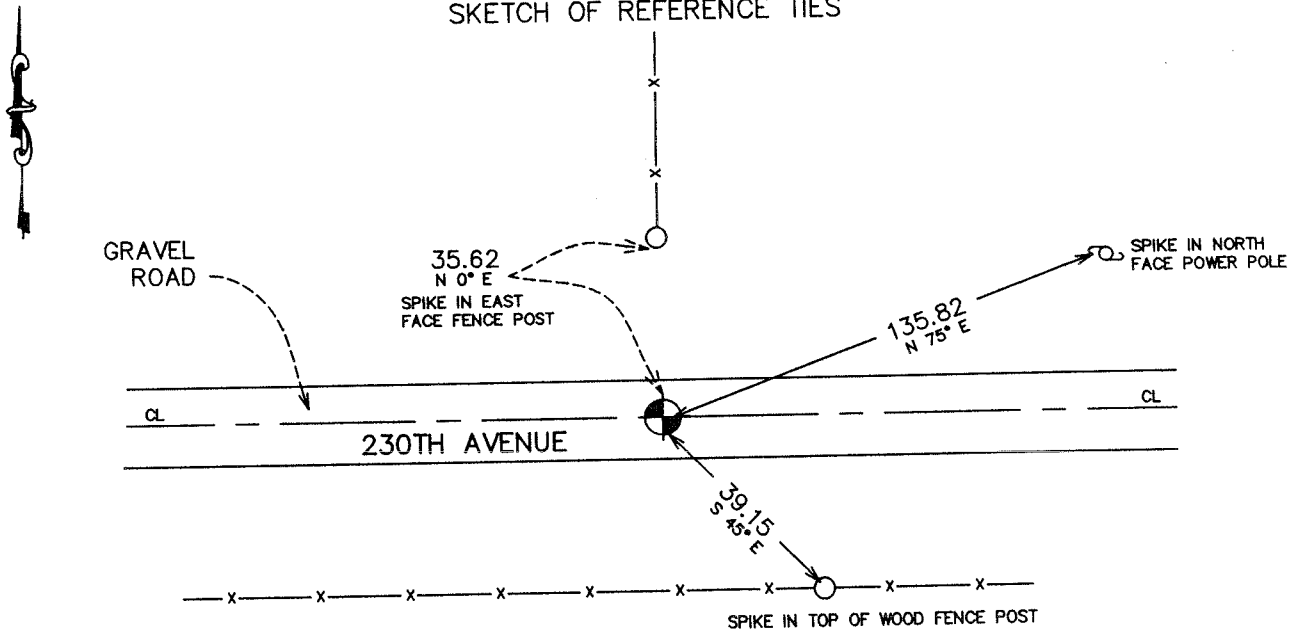
Northing= 169083.61

Easting= 388235.08

Note: NAD 1983, HARN 1996 Adjustment
coordinates are NOT compatible with
NAD 1983 coordinates

Note: 1 Meter=3937/1200 U.S. Survey Feet

SKETCH OF REFERENCE TIES



Statement of evidence relative to this corner location is on back of page.

I hereby certify that this document and the data contained herein was prepared by me or under my direct supervision.

Ernest Blud 6-07-2004
Signature Date

Registration No. 9008

Land Surveyor, Professional Engineer

County Surveyor, County Engineer

OFFICE OF THE COUNTY RECORDER

County of _____

I hereby certify that this document was filed in the County Recorder's office at _____ M. on the _____ day of _____ A.D., 20____

County Recorder _____

BY _____ Deputy

DOCUMENT NO. _____

STATEMENT OF EVIDENCE

Original corner was set by Government Surveyor Silas Barnard in October 1855. The wooden post and bearing trees no longer remain.

There is a road order on file at the Kanabec County Assessors Office dated May 22, 1905 which F.B. Vickery surveyed from the Northwest corner of Section 33 to the North Quarter corner.

In April 2004, E.G. Rud ran a survey around Section 28 to tie in lines of occupation and existing monuments.

On May 3rd, we excavated a 10 foot by 13 foot hole 1 foot into the natural ground on the centerline of 230th Avenue and an old fence line to the north. This road bed had been subject to frost and we encountered a lot of pit run rock that had been hauled in. Topsoil was found on south 1/2 of road, but on north 1/2, no sign of topsoil. Any evidence as to the perpetuation of the corner was lost due to road maintenance. We set a #7 rebar 24" long at the fence line extended and on the centerline of the road. This fell 2 feet west of a split between the Northwest and Northeast Corners of Section 28. We took ties and established Kanabec County Coordinates on the monument using G.P.S. equipment.