

CERTIFICATE OF LOCATION OF GOVERNMENT CORNER

SOUTHEAST Corner of Section 29, Township 40, Range 24, 4TH P.M.

STATE OF MINNESOTA, County of KANABEC

At the corner location shown on the sketch:
On 05/ /2004 Found a Kanabec County Monument.

Kanabec County U.S. Survey Feet Coordinates
NAD 1983, HARN 1996 Adjustment
Obtained by RTK GPS Observation

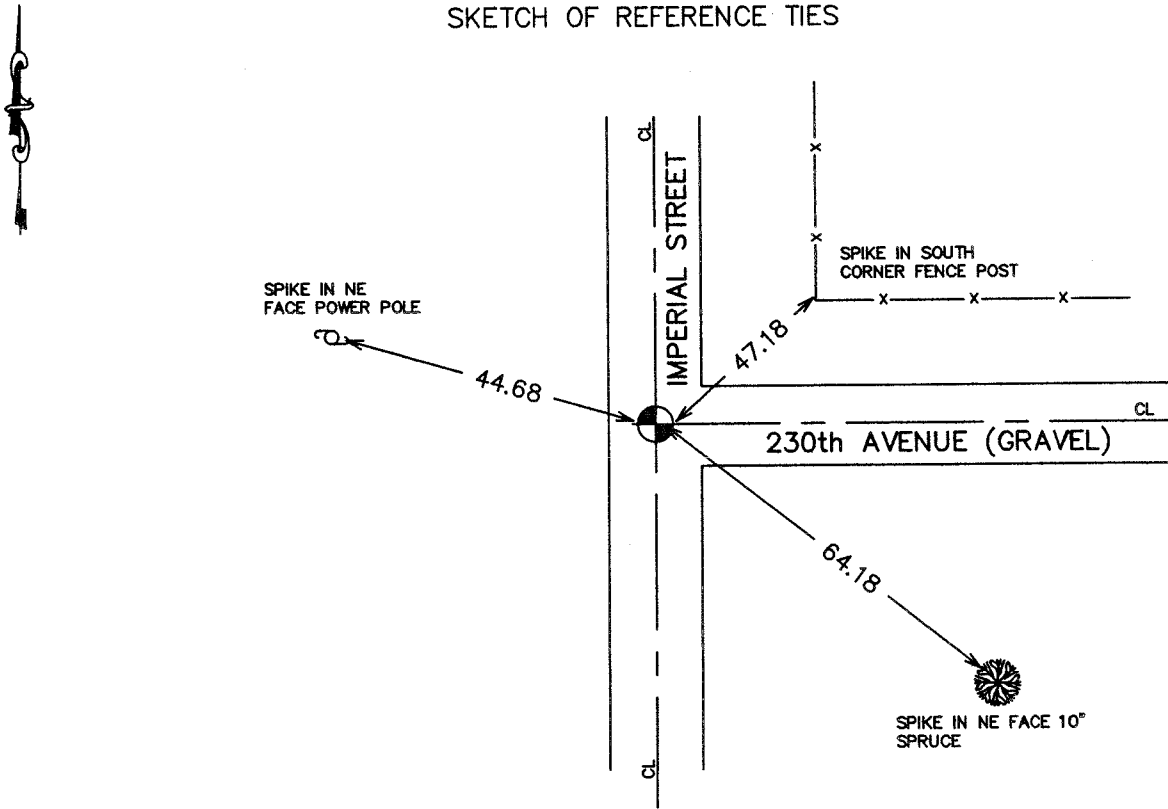
Northing= 169074.03

Easting= 385602.37

Note: NAD 1983, HARN 1996 Adjustment
coordinates are NOT compatible with
NAD 1983 coordinates

Note: 1 Meter=3937/1200 U.S. Survey Feet

SKETCH OF REFERENCE TIES



Statement of evidence relative to this corner location is on back of page.

I hereby certify that this document and the data contained herein was prepared by me or under my direct supervision.

Ernest J. Reed
Signature

6-14-04
Date

Registration No. 9808

Land Surveyor, [] Professional Engineer

[] County Surveyor, [] County Engineer

OFFICE OF THE COUNTY RECORDER

County of _____

I hereby certify that this document was filed in the County Recorder's office at _____ M. on the _____ day of _____ A.D., 20____

County Recorder _____

BY _____ Deputy

DOCUMENT NO. _____

STATEMENT OF EVIDENCE

SE cor Sec 29-40-24

Original corner was set by Government Surveyor Silas Barnard in October 1855. Original bearing trees no longer remain.

Records at Kanabec County indicate no surveys being made which involve this corner.

In July 2001, we excavated an area 15 feet by 20 feet by 4' deep at a centerline—centerline intersection. We found a 20 P spike above a 2' boulder below. We excavated below natural grade and could not find any other evidence.

We accepted this location of the 20 P spike and boulder as the best evidence for the section corner. We set a #7 rebar with Kanabec County aluminum cap at this location.

In May 2004, we did a survey around Section 28 and found this monument. We established Kanabec County Coordinates using G.P.S. equipment on this location.