

# CERTIFICATE OF LOCATION OF GOVERNMENT CORNER

EAST QUARTER Corner of Section 32, Township 40, Range 24, 4TH P.M.

STATE OF MINNESOTA, County of KANABEC

At the corner location shown on the sketch:

SET THIS MONUMENT  
AND ESTABLISHED KANABEC COUNTY COORDINATES ON ITS LOCATION.

Kanabec County U.S. Survey Feet Coordinates  
NAD 1983, HARN 1996 Adjustment  
Obtained by RTK GPS Observation

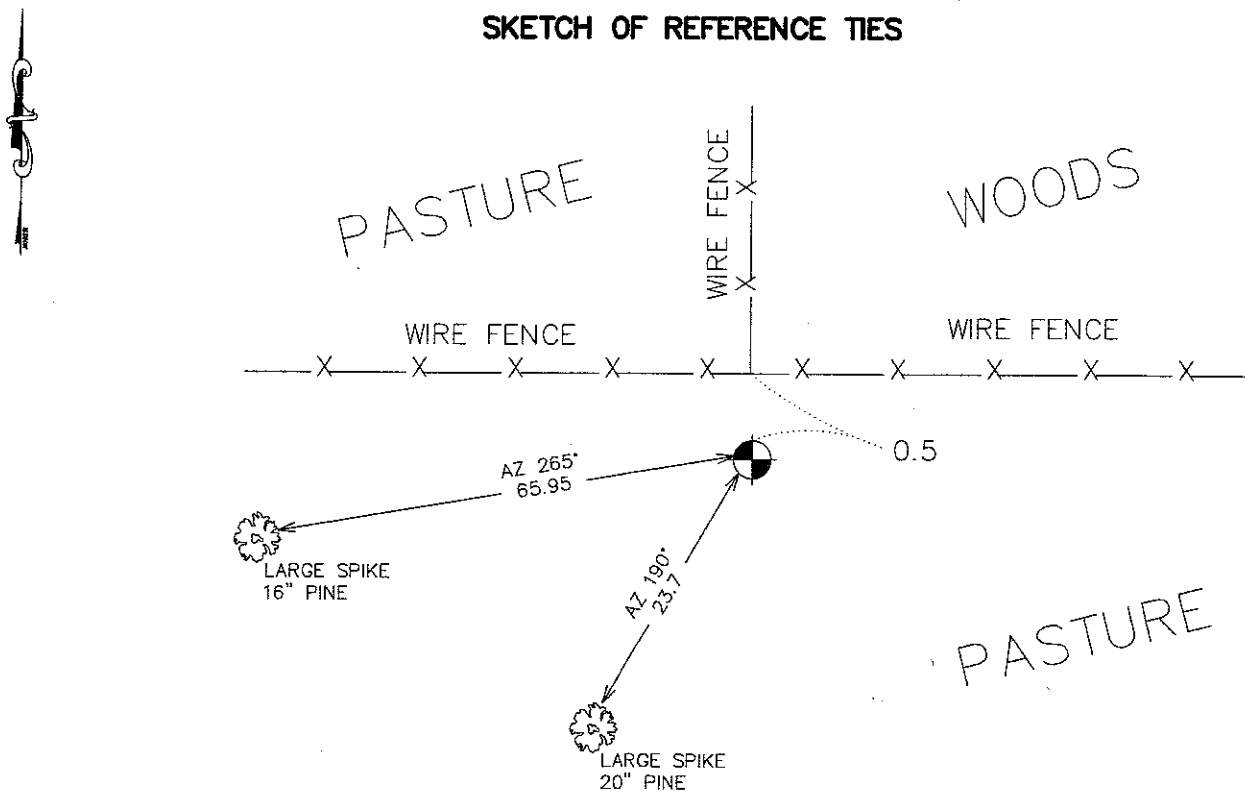
Northing= 166444.238

Easting= 385649.022

Note: NAD 1983, HARN 1996 Adjustment  
coordinates are NOT compatible with  
NAD 1983 coordinates

Note: 1 Meter=3937/1200 U.S. Survey Feet

### SKETCH OF REFERENCE TIES



Statement of evidence relative to this corner location is on back of page.

I hereby certify that this document and the data contained herein was prepared by me or under my direct supervision.

Ernest Alud 8-20-2007  
Signature Date

Registration No. Minn No 9808

Land Surveyor,  Professional Engineer  
 County Surveyor,  County Engineer

### OFFICE OF THE COUNTY RECORDER

County of \_\_\_\_\_

I hereby certify that this document was filed in the County Recorder's office at \_\_\_\_\_ M. on the \_\_\_\_\_ day of \_\_\_\_\_ A.D., 20\_\_\_\_

County Recorder \_\_\_\_\_

BY \_\_\_\_\_ Deputy

DOCUMENT NO. \_\_\_\_\_

EAST QUARTER CORNER SECTION 32, T40, R24

**STATEMENT OF EVIDENCE**

THE ORIGINAL CORNER POST WAS SET BY DEPUTY SURVEYOR SILAS BARNARD AND TWO BEARING TREES ESTABLISHED ON OCTOBER 16, 1855. ANY VISIBLE EVIDENCE FOR THE POST OR BEARING TREES NO LONGER REMAIN.

NO OTHER RECORDS OR SUBSEQUENT SURVEYS COULD BE FOUND AT THE KANABEC COUNTY OFFICES.

IN OCTOBER 2006, E.G. RUD AND SONS DID A SURVEY IN SECTION 33 AND SET THE QUARTER CORNER 1/2 FOOT SOUTH OF A FENCE INTERSECTION RUNNING EAST, WEST, AND NORTH FROM THIS LOCATION.

THIS POSITION IS WITHIN 4 FEET OF BEING EQUIDISTANT FROM THE NORTHEAST TO SOUTHEAST CORNER OF SECTION 32. AFTER SUBDIVIDING SECTION 33 THE CENTER OF SECTION FELL WITHIN 0.5 FEET OF THE FENCE INTERSECTION.

REFERENCE TIES WERE TAKEN AND KANABEC COUNTY COORDINATES ESTABLISHED USING G.P.S. EQUIPMENT.