

# CERTIFICATE OF LOCATION OF GOVERNMENT CORNER

NORTH QUARTER Corner of Section 10, Township 40, Range 24, 4TH P.M.

STATE OF MINNESOTA, County of KANABEC

At the corner location shown on the sketch:

FOUND A 2 1/2 INCH BY 19 INCH KANABEC COUNTY CAST IRON MONUMENT AND STEEL POST.

Kanabec County U.S. Survey Feet Coordinates  
NAD 1983, HARN 1996 Adjustment  
Obtained by RTK GPS Observation

Northing= 190207.90

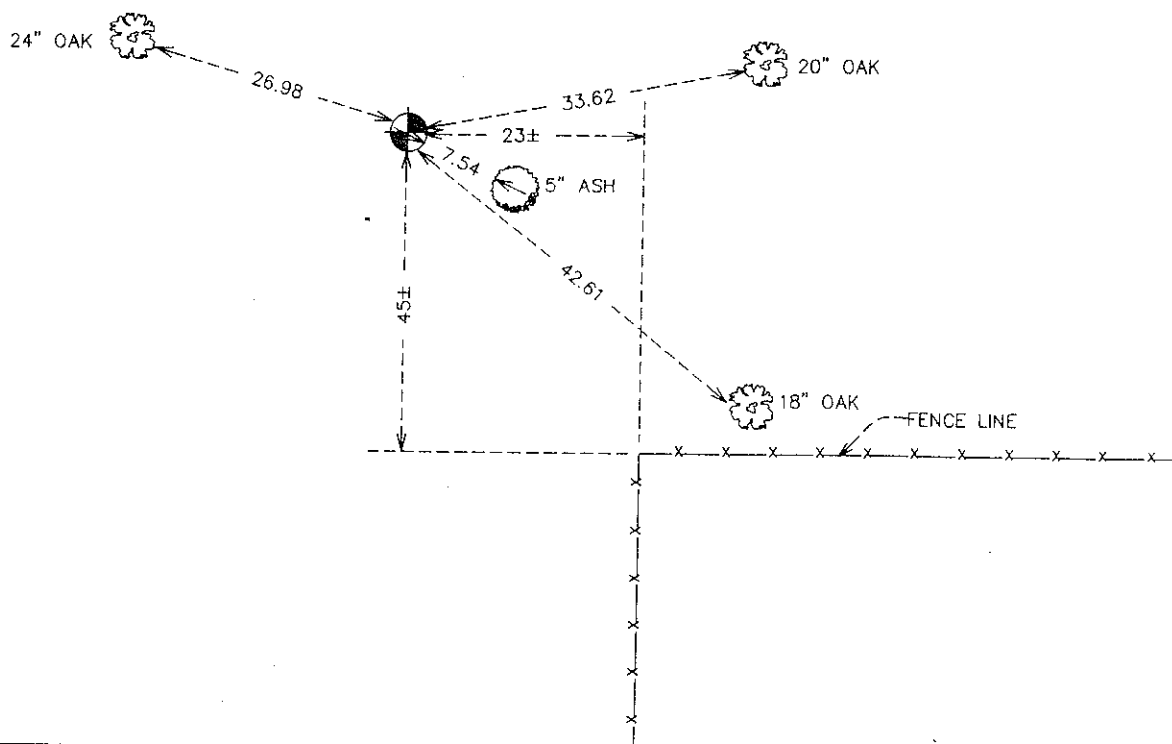
Easting= 393567.62

Note: NAD 1983, HARN 1996 Adjustment - coordinates are NOT compatible with NAD 1983 coordinates

Note: 1 Meter=3937/1200 U.S. Survey Feet

### SKETCH OF REFERENCE TIES

TIES ARE TO SPIKE IN BLAZE IN NEAR FACE



Statement of evidence relative to this corner location is on back of page.

I hereby certify that this document and the data contained herein was prepared by me or under my direct supervision.

*Ernest J. Dred*  
Signature

2-07-2008  
Date

Registration No. 9808

Land Surveyor,  Professional Engineer

County Surveyor,  County Engineer

### OFFICE OF THE COUNTY RECORDER

County of \_\_\_\_\_

I hereby certify that this document was filed in the County Recorder's office at \_\_\_\_\_ M. on the

\_\_\_\_\_ day of \_\_\_\_\_ A.D., 20 \_\_\_\_\_

County Recorder \_\_\_\_\_

BY \_\_\_\_\_ Deputy

DOCUMENT NO. \_\_\_\_\_

NORTH QUARTER CORNER SECTION 10, TOWNSHIP 40, RANGE 24

**STATEMENT OF EVIDENCE**

ALL OF THE ORIGINAL BEARING TREES ARE NOW GONE.

JOHN NELSON, THE COUNTY SURVEYOR, MADE A SURVEY IN SECTION 10 IN 1904 AND USED A SPLIT OF THE NORTH LINE FOR THIS CORNER.

ON JUNE 7, 1879, M.B. RUDE SET A 2 3/4 INCH BY 19 INCH CAST IRON MONUMENT AND STEEL POST AT THIS CORNER BY SINGLE PROPORTIONAL MEASUREMENT BETWEEN THE NORTHEAST AND NORTHWEST CORNERS OF SECTION 10.

A LINE FROM THE SOUTH QUARTER CORNER THROUGH A CAST IRON MONUMENT SET AT THE CENTER OF THE SECTION BY SULLIVAN, EXTENDED NORTH FALLS 30.50 FEET WEST OF A SPLIT OF THE NORTH LINE.

THERE IS AN OLD FENCE CORNER 45 FEET SOUTH AND 23 FEET EAST OF A LINE AND SPLIT OF THE NORTH LINE OF SECTION 10; HOWEVER, THIS FENCE IS VERY CROOKED.

A SEARCH WAS MADE AT ALL OF THESE LOCATIONS, BUT NO EVIDENCE WAS FOUND.

IN 2003 E.G. RUD & SONS, INC. ESTABLISHED KANABEC COUNTY COORDINATES ON THIS POSITION USING GLOBAL POSITIONING SYSTEM (G.P.S.) EQUIPMENT.