

# CERTIFICATE OF LOCATION OF GOVERNMENT CORNER

SOUTHWEST Corner of Section 3, Township 40, Range 24, 4TH P.M.

STATE OF MINNESOTA, County of KANABEC

At the corner location shown on the sketch:  
On 06/ /2003 Found a Kanabec County Monument.

Kanabec County U.S. Survey Feet Coordinates  
NAD 1983, HARN 1996 Adjustment  
Obtained by RTK GPS Observation

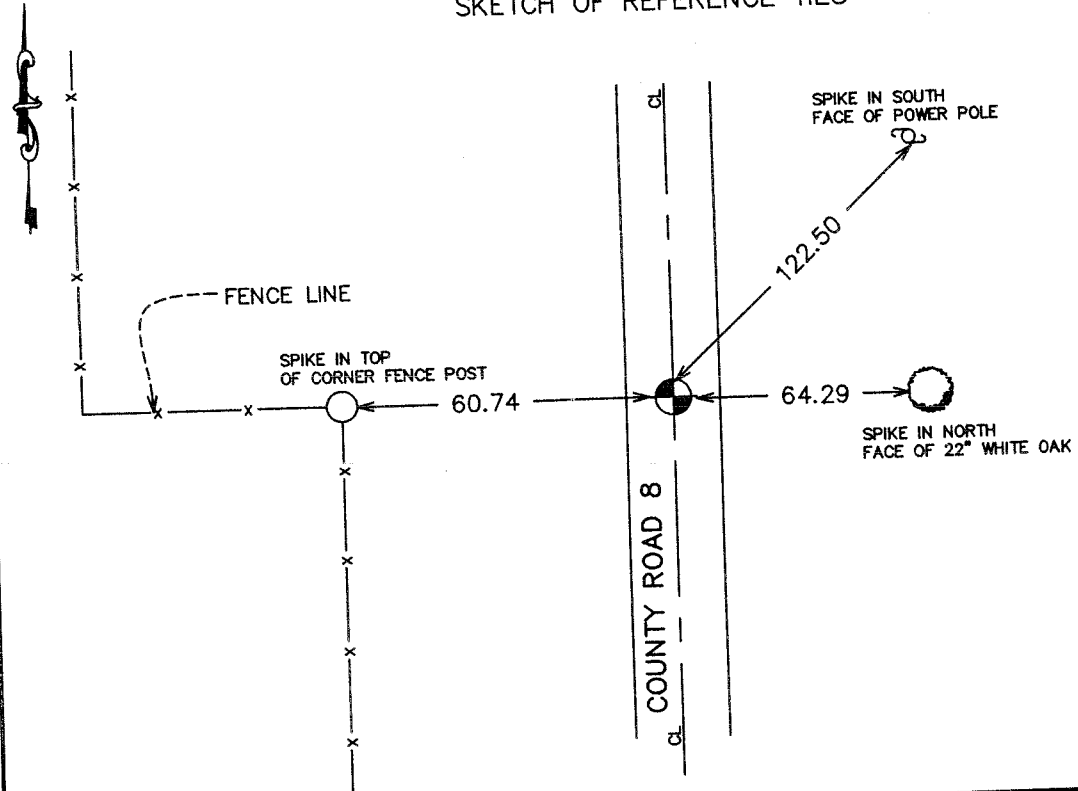
Northing= 190199.353

Easting= 390921.882

Note: NAD 1983, HARN 1996 Adjustment  
coordinates are NOT compatible with  
NAD 1983 coordinates

Note: 1 Meter=3937/1200 U.S. Survey Feet

## SKETCH OF REFERENCE TIES



Statement of evidence relative to this corner location is on back of page.

I hereby certify that this document and the data contained herein was prepared by me or under my direct supervision.

*Ernest Blund*  
Signature

6-30-2004  
Date

Registration No. 9808

- Land Surveyor,       Professional Engineer
- County Surveyor,     County Engineer

## OFFICE OF THE COUNTY RECORDER

County of \_\_\_\_\_  
I hereby certify that this document was filed in  
the County Recorder's office at \_\_\_\_\_ M. on the  
\_\_\_\_\_ day of \_\_\_\_\_ A.D., 20\_\_\_\_

County Recorder \_\_\_\_\_  
BY \_\_\_\_\_ Deputy

DOCUMENT NO. \_\_\_\_\_

STATEMENT OF EVIDENCE  
(FROM TIE SHEET 361)

Set monument from sandstone found in excavation 6' below as it fit all occupation lines and centerline of roads.

John Nelson set the sandstone in June 1901.

In June of 2003, we found this monument and established Kanabec County Coordinates on this position using G.P.S. equipment. After County Road 8 was reconstructed and blacktoppd we reset this monument in the same location and took new ties in June 2004.