

CERTIFICATE OF LOCATION OF GOVERNMENT CORNER

East Quarter Corner of Section 9, Township 40 North, Range 24 West,
4th Principal Meridian, Kanabec County, State of Minnesota

At the corner location shown on the sketch:
On 5/31/2018 set a large Mag Spike on-line between the NE and SE corners of Section 9 and on the westerly extension of the north line of the plat of NELSON'S KNIFE LAKE ADDITION.

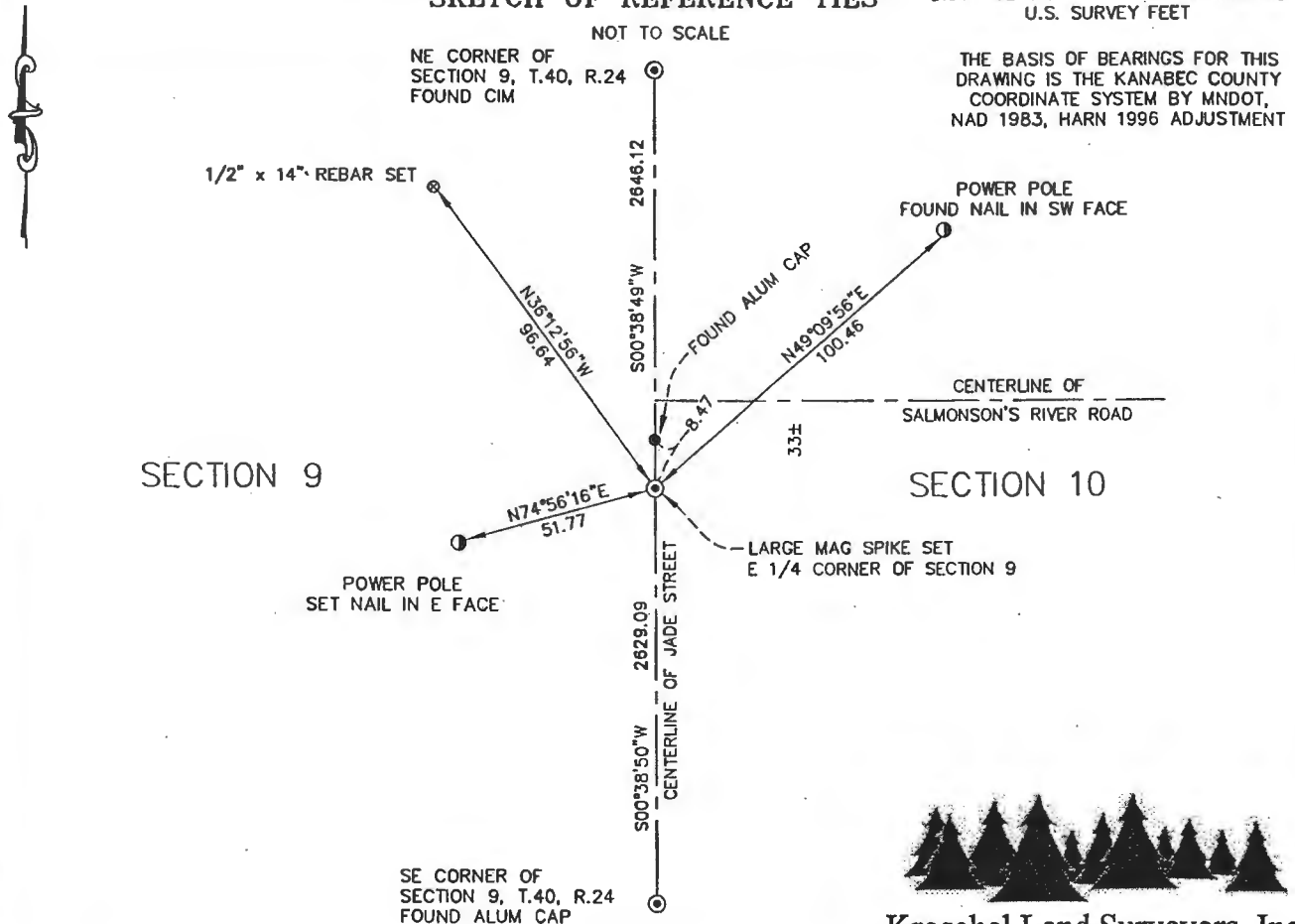
Kanabec County U.S. Survey Feet Coordinates
NAD 1983, HARN 1996 Adjustment
Obtained by RTK GPS observation
Northing: 187553.4023
Easting: 390892.0038

Note: NAD 1983, HARN 1996 Adjustment coordinates are NOT compatible with NAD 1983 coordinates

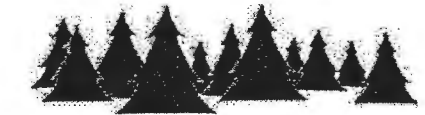
Note: 1 Meter = 3937/1200 U.S. Survey Feet

SKETCH OF REFERENCE TIES

DISTANCE UNITS FOR THIS DRAWING IS
U.S. SURVEY FEET



THE BASIS OF BEARINGS FOR THIS
DRAWING IS THE KANABEC COUNTY
COORDINATE SYSTEM BY MNDOT,
NAD 1983, HARN 1996 ADJUSTMENT



Kroschel Land Surveyors, Inc.
1639 Main Street North, Suite 6, Pine City, MN 55063
Phone: 320-629-3267 Fax: 320-629-0176

Statement of evidence relative to this corner location is on back of page.

I hereby certify that this report was prepared by me or under my direct supervision, that the United States public land survey monument record is correct and complete to the best of my knowledge and belief, and that I am a duly Licensed Land Surveyor under the laws of the State of Minnesota.

Tyler J. Kroschel, County Surveyor

License No. 44490

3/5/2021
Date

OFFICE OF THE COUNTY RECORDER

County of Kanabec

I hereby certify that this document was filed in the County Recorder's office at _____ .M. on the _____ day of _____ A.D., 20____

County Recorder _____, Deputy

DOCUMENT NO. _____

Statement of Evidence:

In October of 1855, Deputy Surveyor Silos Barnard set a post to mark the East Quarter Corner of Section 9, Township 40 North, Range 24 West, 4th Principal Meridian.

Reference ties were taken to:

- 32 inch Pine at South 40 degrees West a distance of 25 links
- 12 inch Sugar at North 60 degrees East a distance of 30 links

All of the original Government corner evidence was searched for. None was found.

1900—Surveyor T.B. Vickery made a survey in Section 10 filed in Book 2 of 2 of Surveys, Page 28, per the records of the Kanabec County Highway Department. He lists a distance of 40 chains along the west line of the SW 1/4 of Section 10.

1901—County Surveyor John Nelson made a survey of Section 9, filed in Book A of Surveys, Page 308, per the records of the Kanabec County Highway Department. He found good Government corners at the four corners of Section 9 and set the Quarter posts halfway in-between. He gives a distance of 39.83 chains north and south of the East Quarter corner of Section 9.

1904—County Surveyor John Nelson made a survey of Section 10, filed in Book A of Surveys, Page 266, per the records of the Kanabec County Highway Department. He gives a distance of 40.16 chains north and south of the West Quarter corner of Section 10.

1953—Surveyor Byron Lathrop, LS 906 surveyed the plat of SALMONSON'S RIVER'S END. Lathrop shows an iron pin at the Center of Section 10, and two additional iron pipes on the east-west quarter line of Section 10.

1960—Kanabec County Highway plans for County Highway No. 8 show a subcut of approximately 3 feet below the existing grade at this location. County Highway Department transit notes show that no monument was found or set at this corner.

1965—Surveyor Gerald Sullivan, LS 6480 surveyed the plat of NELSON'S KNIFE LAKE ADDITION. Sullivan shows an iron monument at the Center of Section 10, and three additional iron monuments on the east-west quarter line of Section 10.

1998—Robert Stransky, LS 14945 made a survey around Section 10 for Jerry Nelson. He set a 1/2" Iron Pipe at the West Quarter corner of Section 10 using a straight line between the NW and SW corners of Section 10 and on the westerly extension of the north line of Lot 1, NELSON'S KNIFE LAKE ADDITION, and filed a Certificate of Location of Government corner in the County Recorder's Office.

2005—County Surveyor Ernie Rud, LS 9808 surveyed the plat of THIRD ADDITION TO SALMONSON'S RIVER'S END. Rud did not find Stransky's corner, as it had been removed by road construction. Rud reset the West Quarter corner of Section 10 at a lost position, using an old section breakdown worksheet from Stransky. This was not the location that Stransky had actually used for his survey. Rud's location is approximately 8 feet north of Stransky's location.

2014—I made a survey in the SW 1/4 of Section 10 for Maurice Clipperton. I found Stransky's correct section breakdown worksheet and I computed his corner location for the West Quarter corner of Section 10.

In May of 2018, I made a survey around Section 10, Township 40 North, Range 24 West, 4th Principal Meridian for Kanabec County to locate existing monuments and establish search areas.

On 5/31/2018 I made a search with a magnetic locator at Stransky's location. No evidence of corner was found. Approximately 8 feet north I found Rud's Aluminum Cap monument. I found one remaining tie of Stransky's, a nail in a power pole to the NE. I also found monuments along the north line of the plat of NELSON'S KNIFE LAKE ADDITION. I extended these monuments west to intersect with a straight line between the NW and SW corners of Section 10. I set a Large Mag Spike at this location and checked Stransky's remaining tie, which fit within 0.01 feet. This location fits Nelson's 1901 distance to the south within 0.31 feet. I established two additional reference ties and assigned Kanabec County Coordinates. This location was determined to be the best available evidence of the original corner monument location.

No excavation was made at this location. The corner appears to be in a cut section of the road. Any evidence of Nelson's corner would likely have been removed by road construction.

Kroschel Land Surveyors, Inc.

1639 Main Street North, Suite 6, Pine City, MN 55063
Phone: 320-629-3267 Fax: 320-629-0176