

CERTIFICATE OF LOCATION OF GOVERNMENT CORNER

Southwest Corner of Section 15, Township 40, Range 24, 4th P.M.

STATE OF MINNESOTA, County of Kanabec

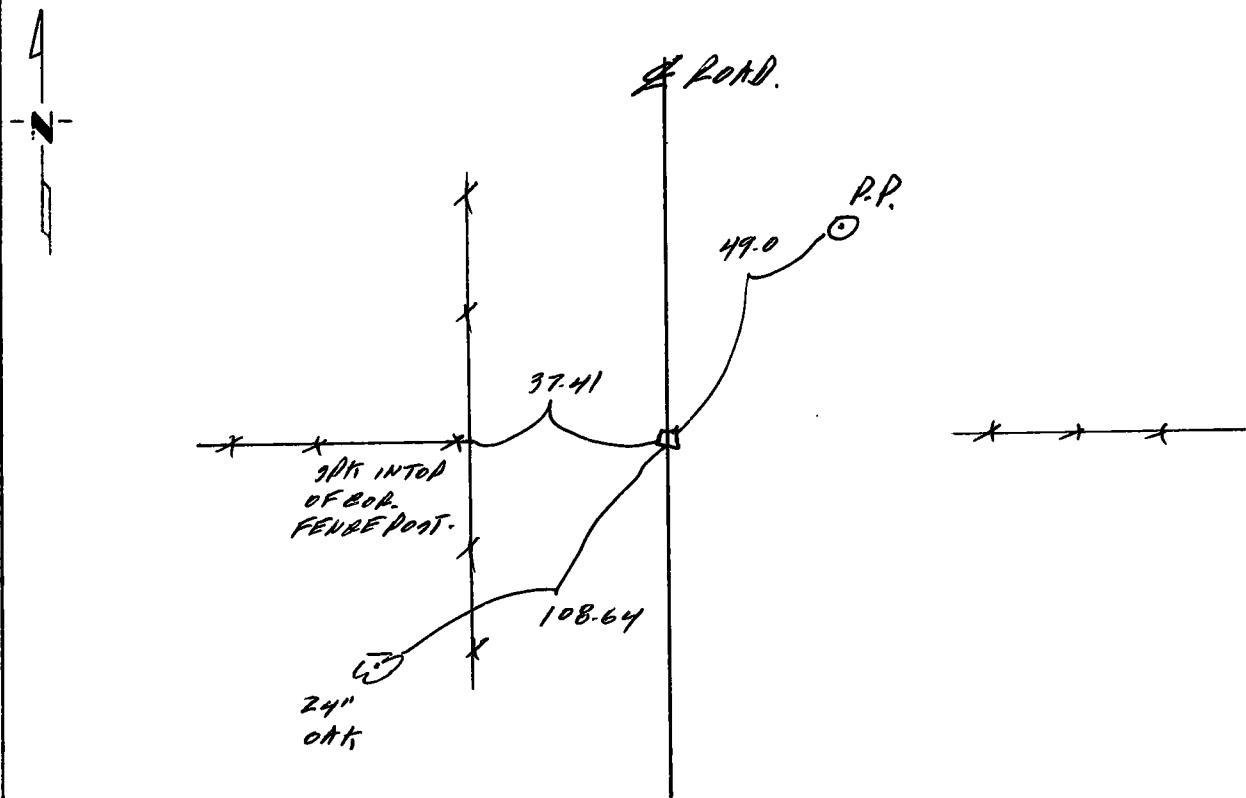
At the corner location shown on the sketch:

On _____ found a _____
DATE

left monument as found, lowered monument, removed monument (explain)

On 7-18-73 placed a Kanabec County Monument
DATE

SKETCH OF REFERENCE TIES



Statement of evidence relative to this corner location is on back of page.

I hereby certify that this document and the data contained herein was prepared by me or under my direct supervision.

Marvin B. Pude 7-30-73
SIGNATURE DATE

Registration No. 8195

Land Surveyor, Professional Engineer

County Surveyor, County Engineer

OFFICE OF THE REGISTER OF DEEDS

County of KANABEC

I hereby certify that this document was filed in the Reg. of Deeds office at 8:30 A.M. on the 7 day of August A.D., 19 73

Register of Deeds Donald P. Nelson

By _____, Deputy

DOCUMENT NO. _____

Statement of Evidence:

Set by lines of occupation and area resident testimony in resurvey of Section 15 for Dam Project by Kanabec County.