

# CERTIFICATE OF LOCATION OF GOVERNMENT CORNER

EAST QUARTER Corner of Section 21, Township 40, Range 24, 4TH P.M.  
 STATE OF MINNESOTA, County of KANABEC

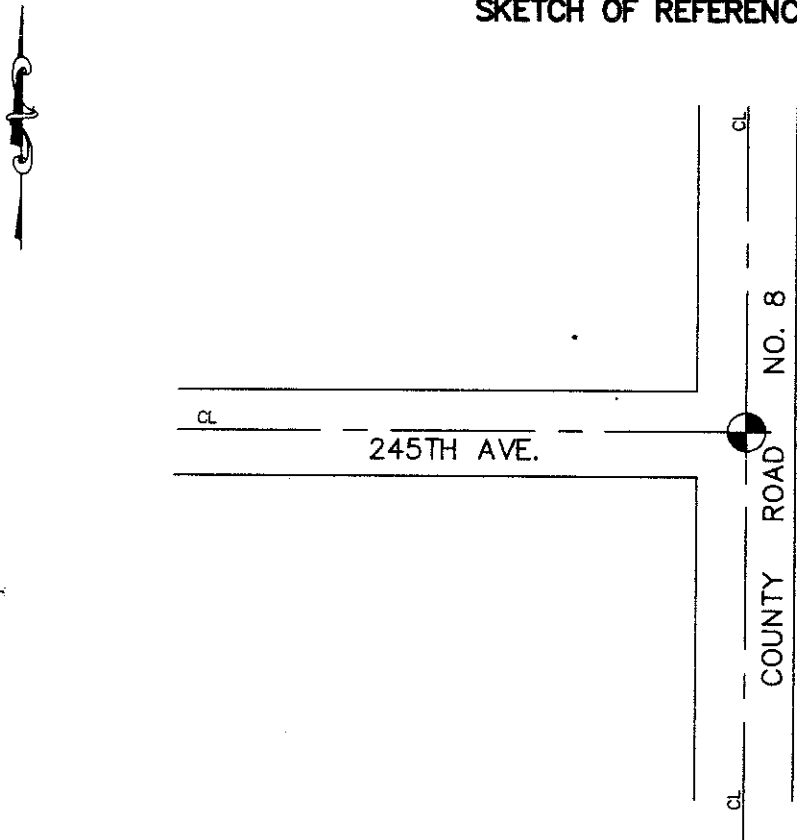
At the corner location shown on the sketch:  
 SET A 1/2 INCH IRON PIPE

Kanabec County U.S. Survey Feet Coordinates  
 NAD 1983, HARN 1996 Adjustment  
 Obtained by RTK GPS Observation

Northing= 177006.45  
 Easting= 390818.11

Note: NAD 1983, HARN 1996 Adjustment  
 coordinates are NOT compatible with  
 NAD 1983 coordinates  
 Note: 1 Meter=3937/1200 U.S. Survey Feet

## SKETCH OF REFERENCE TIES



Statement of evidence relative to this corner location is on back of page.

I hereby certify that this document and the data contained herein was prepared by me or under my direct supervision.

Ernest J. Rud                      3-31-2008  
Signature                                      Date

Registration No. 9808

- Land Surveyor,            [ ] Professional Engineer  
 [ ] County Surveyor,        [ ] County Engineer

### OFFICE OF THE COUNTY RECORDER

County of \_\_\_\_\_

I hereby certify that this document was filed in the County Recorder's office at \_\_\_\_\_ M. on the \_\_\_\_\_ day of \_\_\_\_\_ A.D., 20\_\_

County Recorder \_\_\_\_\_

BY \_\_\_\_\_ Deputy

DOCUMENT NO. \_\_\_\_\_

EAST QUARTER CORNER SECTION 21, TOWNSHIP 40, RANGE 24

**STATEMENT OF EVIDENCE**

ALL OF THE ORIGINAL BEARING TREES ARE NOW GONE.

IN JULY OF 1976, M.B. RUDE MADE AN EXCAVATION WITH THE COUNTY BACKHOE 12 FEET WIDE EAST-WEST, AND 20 FEET LONG NORTH-SOUTH AND 7 FEET DEEP 2 FEET INTO THE NATURAL GROUND AT THE INTERSECTION OF ROADS NORTH-SOUTH-CENTERLINE WEST, POWER POLE LINE EAST.

HE FOUND TWO SANDSTONES WITH NO MARKINGS IN EXCAVATION, AT 6 FEET DOWN WE FOUND POINT OF WOOD POST IN NATURAL GROUND.

HE OFFSET POINT OF WOOD POST AND BACKFILLED EXCAVATION. SET CAST IRON MONUMENT 1 INCH BELOW SURFACE ON POINT OF WOOD POST LOCATION.

IN 2006 E.G. RUD & SONS, INC. RAN A SURVEY ALONG THE EAST LINE OF SECTIONS 16, 21, AND 28. WE THEN REESTABLISHED THIS CORNER FROM M.B. RUDE'S ALIGNMENT OF COUNTY ROAD NO. 8. A 1/2 INCH IRON PIPE WAS SET AND KANABEC COUNTY COORDINATES WERE ESTABLISHED ON THIS POSITION USING GLOBAL POSITIONING SYSTEM (G.P.S.) EQUIPMENT.