

CERTIFICATE OF LOCATION OF GOVERNMENT CORNER

NORTHEAST Corner of Section 28, Township 40, Range 24, 4TH P.M.

STATE OF MINNESOTA, County of KANABEC

At the corner location shown on the sketch:
On 05 / /2004 Found a Kanabec County Monument.

Kanabec County U.S. Survey Feet Coordinates
NAD 1983, HARN 1996 Adjustment
Obtained by RTK GPS Observation

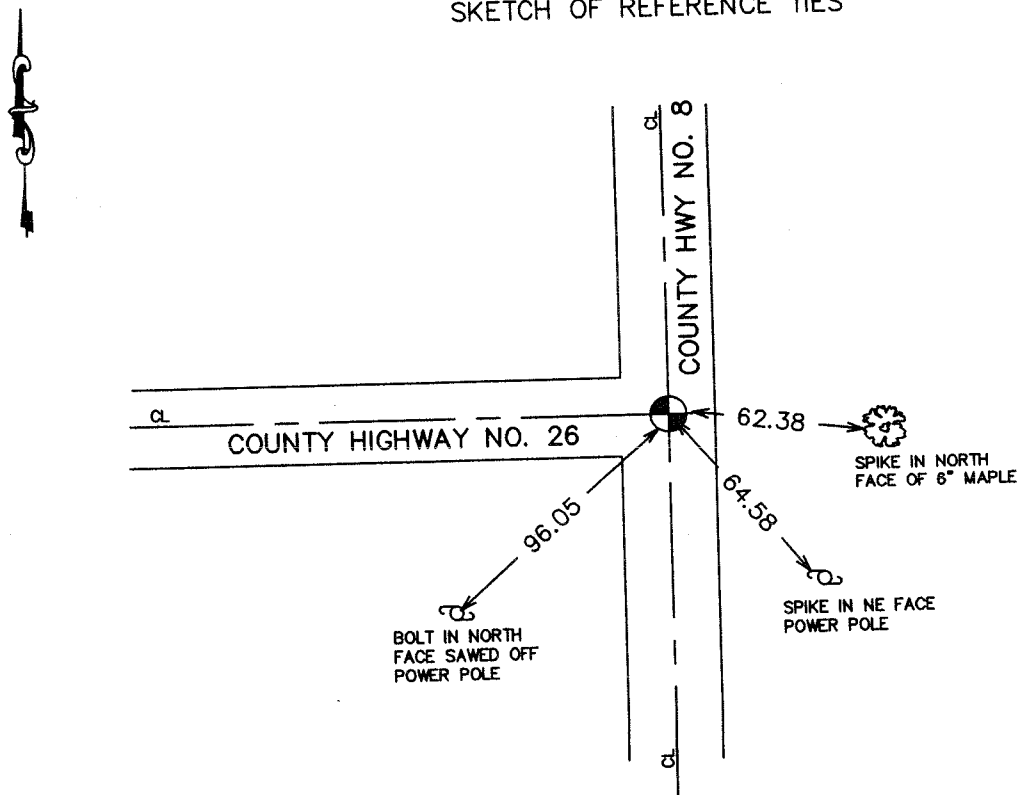
Northing= 174362.62

Easting= 390845.24

Note: NAD 1983, HARN 1996 Adjustment
coordinates are NOT compatible with
NAD 1983 coordinates

Note: 1 Meter=3937/1200 U.S. Survey Feet

SKETCH OF REFERENCE TIES



Statement of evidence relative to this corner location is on back of page.

I hereby certify that this document and the data contained herein was prepared by me or under my direct supervision.

Ernest Alud
Signature

6-07-2004
Date

Registration No. 9808

Land Surveyor, [] Professional Engineer

[] County Surveyor, [] County Engineer

OFFICE OF THE COUNTY RECORDER

County of _____

I hereby certify that this document was filed in the County Recorder's office at _____ M. on the _____ day of _____ A.D., 20____

County Recorder _____

BY _____ Deputy

DOCUMENT NO. _____

STATEMENT OF EVIDENCE
(FROM TIE SHEET 483)

All of the original bearing trees are now gone.

In July 1976, we made an excavation with the county backhoe 12 feet wide east-west and 20 feet long north-south, 5 feet deep at the intersection of roads north-south and west fence line east.

At 5 feet down, we found a sandstone monument marked with an "X". We off set the sandstone location and backfilled the excavation. We set a cast iron monument 1" below surface at the sandstone location.

(2004)

In May, 2004, we did a survey around Section 28, and found this monument set by M.B. Rude. We established Kanabec County Coordinates using G.P.S. equipment on this location.