

CERTIFICATE OF LOCATION OF GOVERNMENT CORNER

EAST QUARTER Corner of Section 28, Township 40, Range 24, 4TH P.M.

STATE OF MINNESOTA, County of KANABEC

At the corner location shown on the sketch:
On 05 / /2004 Found a Kanabec County Monument.

Kanabec County U.S. Survey Feet Coordinates
NAD 1983, HARN 1996 Adjustment
Obtained by RTK GPS Observation

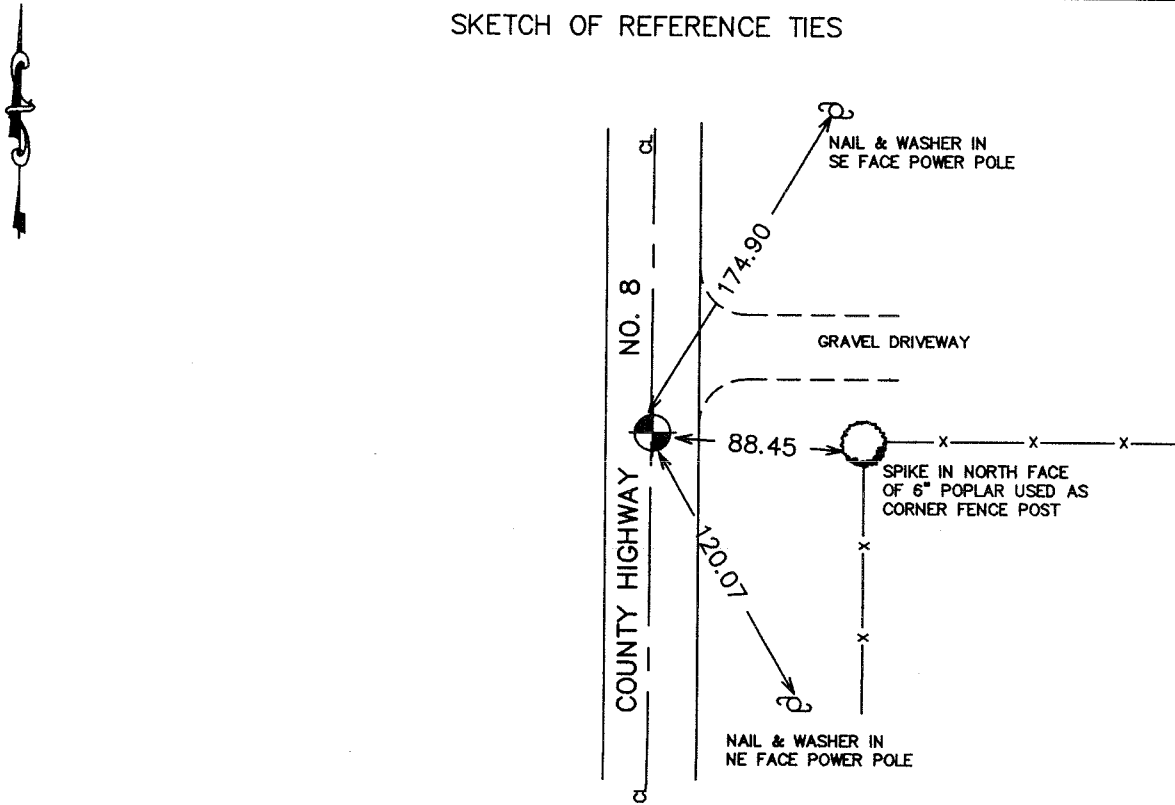
Northing= 171732.33

Easting= 390857.55

Note: NAD 1983, HARN 1996 Adjustment
coordinates are NOT compatible with
NAD 1983 coordinates

Note: 1 Meter=3937/1200 U.S. Survey Feet

SKETCH OF REFERENCE TIES



Statement of evidence relative to this corner location is on back of page.

I hereby certify that this document and the data contained herein was prepared by me or under my direct supervision.

Ernest E. Red
Signature

6-07-2004
Date

Registration No. 9808

Land Surveyor, Professional Engineer

County Surveyor, County Engineer

OFFICE OF THE COUNTY RECORDER

County of _____

I hereby certify that this document was filed in the County Recorder's office at _____ M. on the

_____ day of _____ A.D., 20 _____

County Recorder _____

BY _____ Deputy

DOCUMENT NO. _____

STATEMENT OF EVIDENCE

from Tie Sheet 482

All of the original bearing trees are now gone.

In July 1976, we made an excavation with the county backhoe 10 feet wide east-west and 20 feet long north-south, 6 feet deep. The excavation extended 2 feet into the natural ground. Excavation was at the intersection of north-south road and fence line east-west. No evidence was found in the excavation.

On September 27, 1976, we made a re-survey of the east line of Section 28 and set a Cast Iron Monument 1" below the surface of the center of the north-south road and fencelines extended from east and west.

This location falls within 2 feet of a split between section corners and is the best available evidence for the location of the original corner.

(2004)

In May, 2004, we did a survey around Section 28, and found this monument set by M.B. Rude. We established Kanabec County Coordinates using G.P.S. equipment on this location.