

CERTIFICATE OF LOCATION OF GOVERNMENT CORNER

NORTH QUARTER Corner of Section 34, Township 40, Range 24, 4TH P.M.
 STATE OF MINNESOTA, County of KANABEC

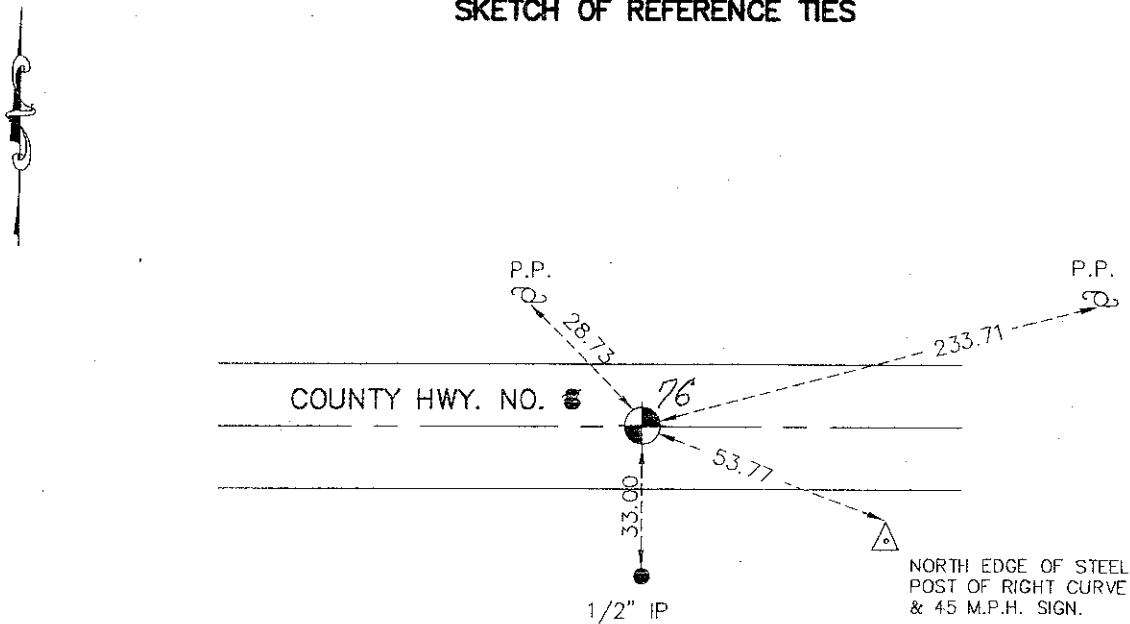
At the corner location shown on the sketch:
 KANABEC COUNTY CAST IRON MONUMENT

Kanabec County U.S. Survey Feet Coordinates
 NAD 1983, HARN 1996 Adjustment
 Obtained by RTK GPS Observation

Northing= 169170.57
 Easting= 393545.53

Note: NAD 1983, HARN 1996 Adjustment
 coordinates are NOT compatible with
 NAD 1983 coordinates
 Note: 1 Meter=3937/1200 U.S. Survey Feet

SKETCH OF REFERENCE TIES



Statement of evidence relative to this corner location is on back of page.

I hereby certify that this document and the data contained herein was prepared by me or under my direct supervision.

Ernest J. Reed 3-17-2009
 Signature Date

Registration No. Minn No 9808

- Land Surveyor, [] Professional Engineer
 [] County Surveyor, [] County Engineer

OFFICE OF THE COUNTY RECORDER

County of _____

I hereby certify that this document was filed in
 the County Recorder's office at _____ M. on the
 _____ day of _____ A.D., 20 ____

County Recorder _____
 BY _____ Deputy

DOCUMENT NO. _____

NORTH QUARTER CORNER SECTION 34, TOWNSHIP 40, RANGE 24

STATEMENT OF EVIDENCE

ALL OF THE ORIGINAL BEARING TREES ARE GONE.

MRS. KEN MATHISON IN THE SOUTHEAST QUARTER OF SEC. 27 AND MR. CARL MATHISON IN THE SOUTHWEST QUARTER OF SEC. 27 BOTH TESTIFIED THAT THE FENCE LINE WHICH STARTS ABOUT 400 FEET NORTH OF THE CORNER AND RUNS BETWEEN THEIR PROPERTIES IS ON THE QUARTER LINE, BUT DID NOT KNOW OF ANY MONUMENT AT THE QUARTER CORNER.

IN JULY, 1976, M.B. RUDE MEASURED THE NORTH LINE OF SEC. 34, AND MADE AN EXCAVATION WITH THE COUNTY BACKHOE 10 FEET WIDE NORTH-SOUTH AND 30 FEET LONG EAST-WEST, 2 FEET INTO NATURAL GROUND.

HE FOUND A SANDSTONE MONUMENT WITH NO MARKINGS. THIS WAS THE ONLY STONE FOUND IN THE EXCAVATION.

HE OFFSET THE SANDSTONE LOCATION AND BACKFILLED THE EXCAVATION AND SET A CAST IRON MONUMENT 1" BELOW THE SURFACE.

THIS LOCATION FITS WELL WITH THE OCCUPATION LINES AT 1/16 CORNER 1/4 MILE TO THE WEST.

IN MARCH 2008, E.G. RUD AND SONS ESTABLISHED KANABEC COUNTY COORDINATES USING G.P.S. EQUIPMENT.