

CERTIFICATE OF LOCATION OF GOVERNMENT CORNER

EAST 1/4 Corner of Section 33, Township 40, Range 24 4TH P.M.

STATE OF MINNESOTA, County of KANABEC

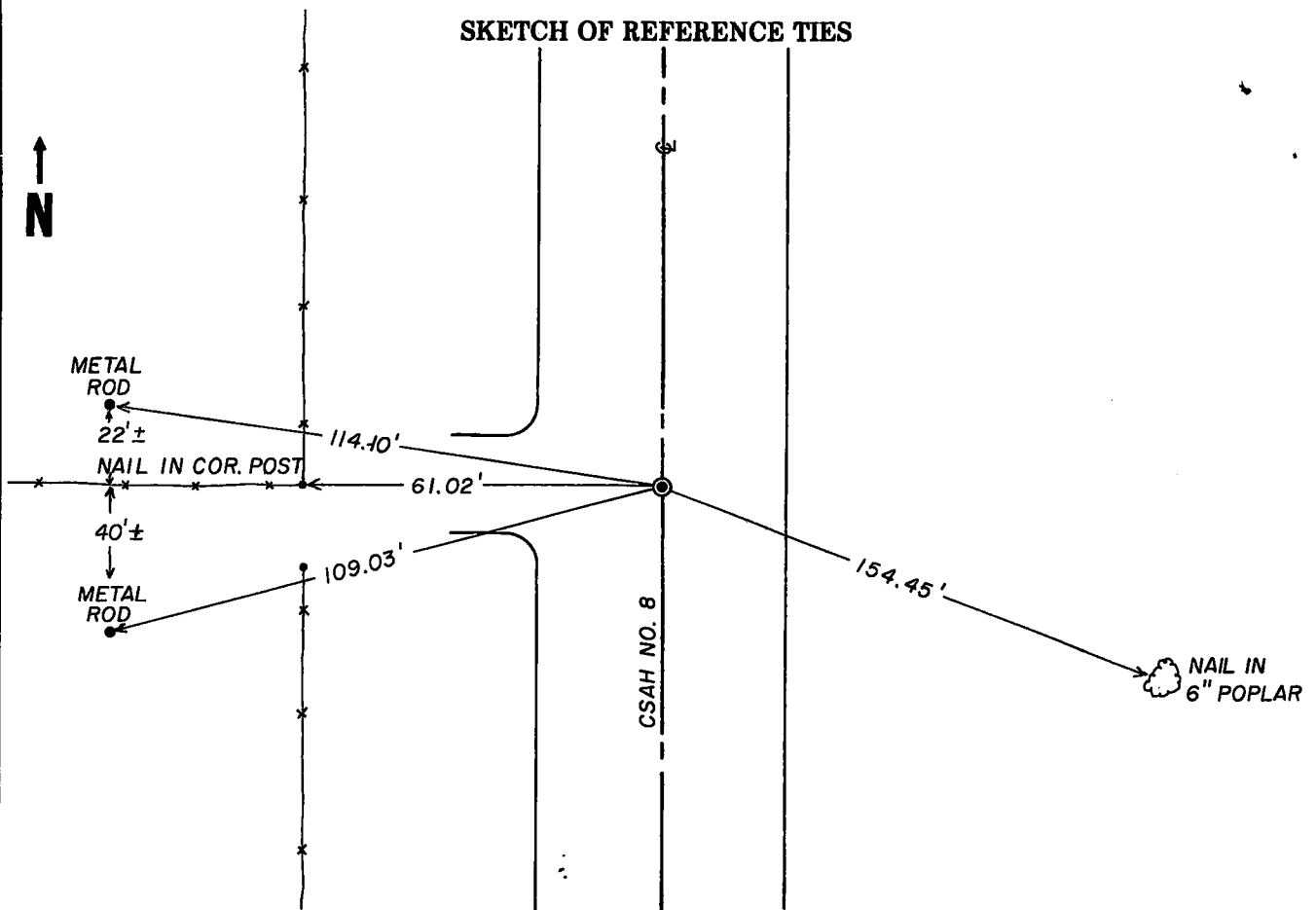
At the corner location shown on the sketch

On 5-7-90 found a CAPPED REBAR
Date

left monument as found, lowered monument, removed monument (explain)

On 4-22-91 placed a CAPPED REBAR
Date

SKETCH OF REFERENCE TIES



Statement of evidence relative to this corner location is on back of page.

I hereby certify that this document and the data contained herein was prepared by me or under my direct supervision.

Gregory A. Moberg 11/8/91
Signature Date

Registration No. 12081

- Land Surveyor, County Surveyor,
- Professional Engineer County Engineer

OFFICE OF THE COUNTY RECORDER

County of Kanabec

I hereby certify that this document was filed in the County Recorder's office at 9:30A M. on the 8 day of November A.D., 1991

County Recorder Velma J. Besser

By _____, Deputy

DOCUMENT NO.

STATEMENT OF EVIDENCE

All existing ties were intact.

We located section marker, and placed additional reference ties outside right-of-way limits.

The roadway was regraded in 1990.
Before the roadway was paved in 1991, the marker was re-established according to references obtained previously.