

CERTIFICATE OF LOCATION OF GOVERNMENT CORNER

NORTHEAST Corner of Section 10, Township 40, Range 24, 4TH P.M.

STATE OF MINNESOTA, County of KANABEC

At the corner location shown on the sketch:
On 06/ /2003 Found a Kanabec County Monument.

Kanabec County U.S. Survey Feet Coordinates
NAD 1983, HARN 1996 Adjustment
Obtained by RTK GPS Observation

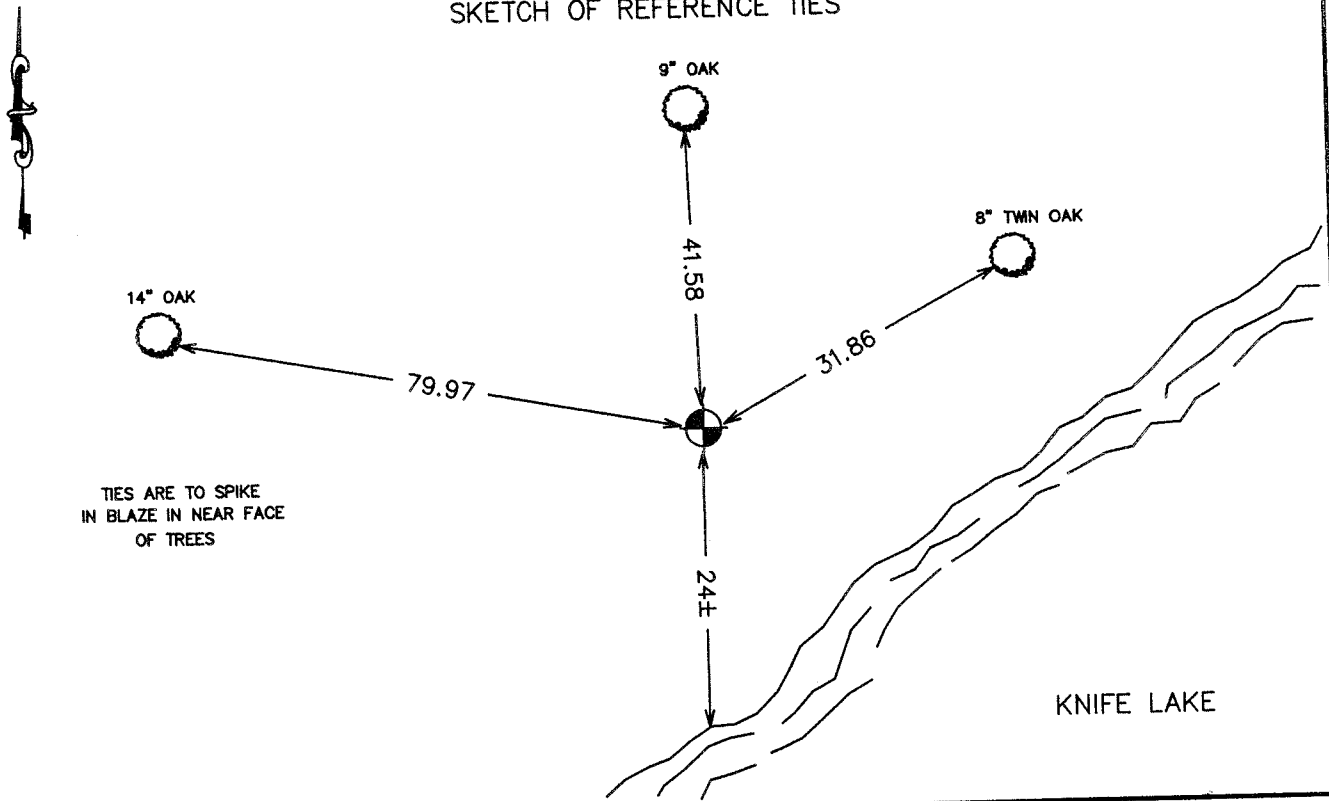
Northing= 190216.43

Easting= 396213.36

Note: NAD 1983, HARN 1996 Adjustment
coordinates are NOT compatible with
NAD 1983 coordinates

Note: 1 Meter=3937/1200 U.S. Survey Feet

SKETCH OF REFERENCE TIES



Statement of evidence relative to this corner location is on back of page.

I hereby certify that this document and the data contained herein was prepared by me or under my direct supervision.

Ernest J. Reed
Signature

6-30-2004
Date

Registration No. 9808

Land Surveyor, [] Professional Engineer

[] County Surveyor, [] County Engineer

OFFICE OF THE COUNTY RECORDER

County of _____

I hereby certify that this document was filed in the County Recorder's office at _____ M. on the _____ day of _____ A.D., 20____

County Recorder _____

BY _____ Deputy

DOCUMENT NO. _____

STATEMENT OF EVIDENCE
(FROM TIE SHEET 542)

All of the original bearing trees are now gone.

John Nelson, the County Surveyor, made a survey in 1904, but no additional ties to the corner were made.

Charles Handschu, a Land Surveyor, made a survey of Knife Lake in 1927, which calls for a poplar tree at the corner. We ran a survey around Section 3 and Section 10 and found a 1/2" iron pipe set in concrete on an old north-south fence line which fits the plat of GILLBERTSON'S HILL and the measurement for the east line of Sections 3 and 10 from Handschu's survey.

We accepted the iron pipe set in concrete as the original corner location.

(2003)

In June of 2003, we found this iron in concrete and established Kanabec County Coordinates on this corner using G.P.S. equipment.