

# CERTIFICATE OF LOCATION OF GOVERNMENT CORNER

SOUTH QUARTER Corner of Section 14, Township 40, Range 24, 4TH P.M.  
STATE OF MINNESOTA, County of KANABEC

At the corner location shown on the sketch:  
FOUND A 1 1/4 INCH PIPE, 1.5 FEET UP

Kanabec County U.S. Survey Feet Coordinates  
NAD 1983, HARN 1996 Adjustment  
Obtained by RTK GPS Observation

Northing= 179676.77

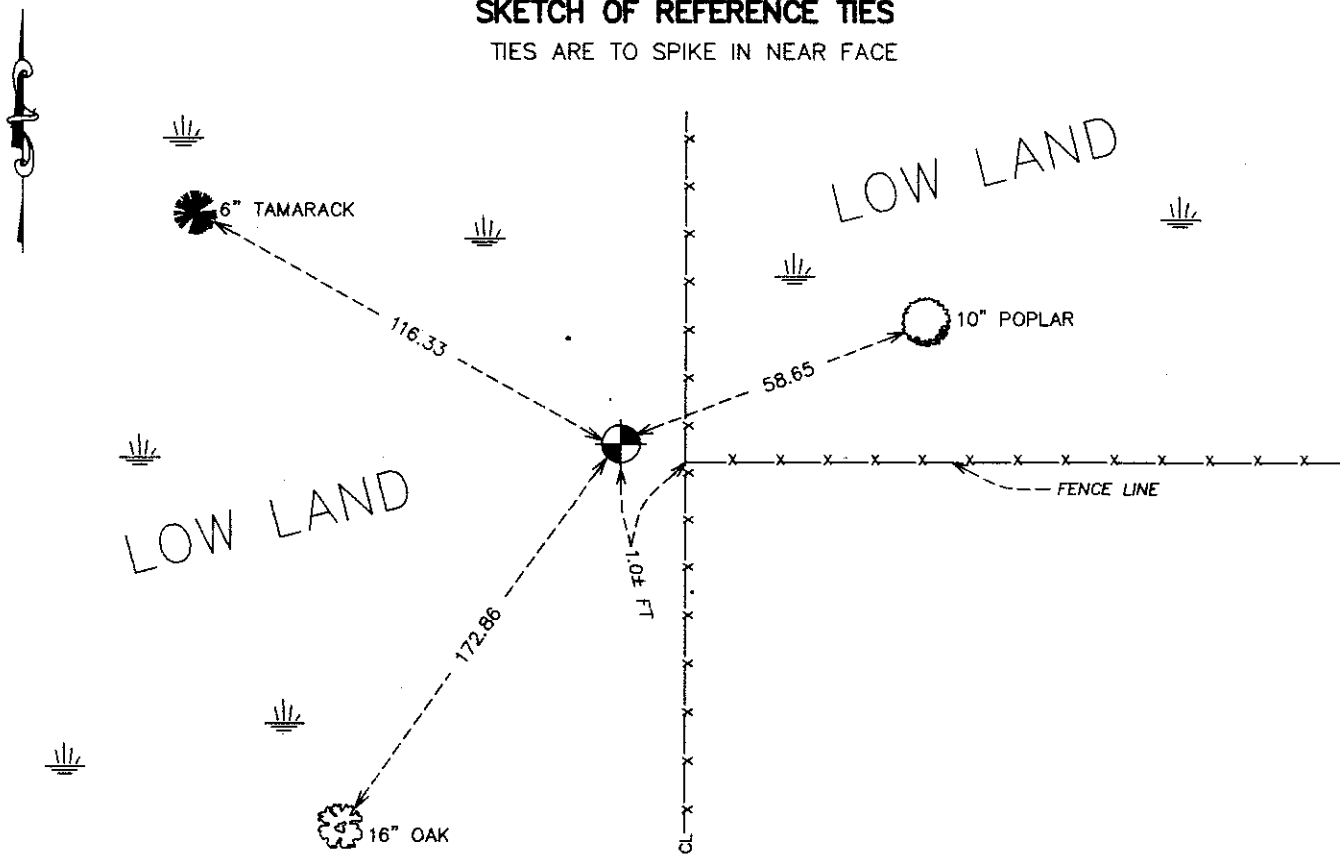
Easting= 398799.67

Note: NAD 1983, HARN 1996 Adjustment  
coordinates are NOT compatible with  
NAD 1983 coordinates

Note: 1 Meter=3937/1200 U.S. Survey Feet

### SKETCH OF REFERENCE TIES

TIES ARE TO SPIKE IN NEAR FACE



Statement of evidence relative to this corner location is on back of page.

I hereby certify that this document and the data contained herein was prepared by me or under my direct supervision.

*Ernest J. Rud*  
Signature

3-31-2008  
Date

Registration No. 9808

- Land Surveyor,     Professional Engineer
- County Surveyor,     County Engineer

### OFFICE OF THE COUNTY RECORDER

County of \_\_\_\_\_

I hereby certify that this document was filed in the County Recorder's office at \_\_\_\_\_ M. on the \_\_\_\_\_ day of \_\_\_\_\_ A.D., 20 \_\_\_\_\_

County Recorder \_\_\_\_\_

BY \_\_\_\_\_ Deputy

DOCUMENT NO. \_\_\_\_\_

SOUTH QUARTER CORNER SECTION 14, TOWNSHIP 40, RANGE 24

**STATEMENT OF EVIDENCE**

ALL OF THE ORIGINAL BEARING TREES ARE NOW GONE.

M.B. RUDE SET THE SOUTH QUARTER CORNER ON THE SOUTHWEST SIDE OF AN OLD CORNER FENCE POST.

A SURVEY WAS RUN ALONG THE SOUTH LINE OF SECTION 14 AND THIS LOCATION FITS WELL WITH THE LINES OF OCCUPATION IN SECTION 14 AND WAS ACCEPTED AS THE BEST AVAILABLE EVIDENCE OF THE ORIGINAL CORNER LOCATION.

IN FEBRUARY 2008 E.G. RUD & SONS, INC. FOUND MONUMENT AND KANABEC COUNTY COORDINATES WERE ESTABLISHED ON THIS POSITION USING GLOBAL POSITIONING SYSTEM (G.P.S.) EQUIPMENT.