

CERTIFICATE OF LOCATION OF GOVERNMENT CORNER

4024072

_____ NORTHEAST _____ Corner of Section 22, Township 40, Range 24, 4TH P.M.

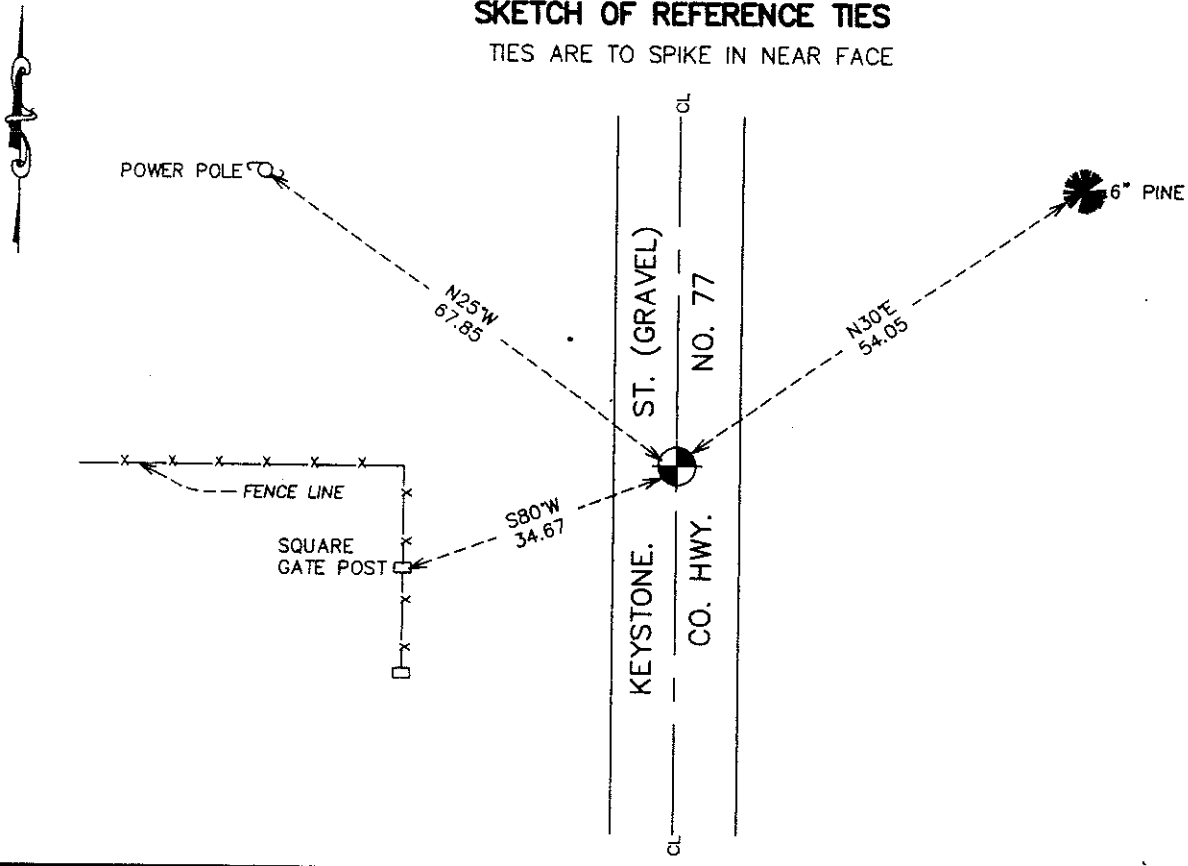
STATE OF MINNESOTA, County of KANABEC

At the corner location shown on the sketch:
 FOUND A 7/8 INCH BY 24 INCH CAPPED REBAR

Kanabec County U.S. Survey Feet Coordinates
 NAD 1983, HARN 1996 Adjustment
 Obtained by RTK GPS Observation
 Northing= 179675.50
 Easting= 396123.92
 Note: NAD 1983, HARN 1996 Adjustment
 coordinates are NOT compatible with
 NAD 1983 coordinates
 Note: 1 Meter=3937/1200 U.S. Survey Feet

SKETCH OF REFERENCE TIES

TIES ARE TO SPIKE IN NEAR FACE



Statement of evidence relative to this corner location is on back of page.

I hereby certify that this document and the data contained herein was prepared by me or under my direct supervision.

Ernest Ghed _____ 3-31-2008
 Signature Date

Registration No. 9808

Land Surveyor, [] Professional Engineer
 [] County Surveyor, [] County Engineer

OFFICE OF THE COUNTY RECORDER

County of _____

I hereby certify that this document was filed in the County Recorder's office at _____ M. on the _____ day of _____ A.D., 20____

County Recorder _____
 BY _____ Deputy

DOCUMENT NO. _____

NORTHEAST CORNER SECTION 22, TOWNSHIP 40, RANGE 24

STATEMENT OF EVIDENCE

M.B. RUDE SET A KANABEC COUNTY MONUMENT BY LINES OF OCCUPATION AND RESIDENT TESTIMONY IN RESURVEY OF SECTION 15 FOR DAM PROJECT BY KANABEC COUNTY. COUNTY ENGINEER'S OFFICE DUG FOR STONE MONUMENT THAT WAS SET IN 1920 BUT COULD FIND NO EVIDENCE OF STONE.

IN 2008 A SURVEY OF SECTIONS 23 AND 26 E.G. RUD & SONS, INC. FOUND MONUMENT, TOOK NEW TIES, AND KANABEC COUNTY COORDINATES WERE STABLISHED ON THIS POSITION USING GLOBAL POSITIONING SYSTEM (G.P.S.) EQUIPMENT.