

CERTIFICATE OF LOCATION OF GOVERNMENT CORNER

EAST QUARTER Corner of Section 22, Township 40, Range 24, 4TH P.M.

STATE OF MINNESOTA, County of KANABEC

At the corner location shown on the sketch:

FOUND A 7/8 INCH BY 24 INCH REBAR WITH AN ALUMINUM KANABEC COUNTY CAP

Kanabec County U.S. Survey Feet Coordinates
NAD 1983, HARN 1996 Adjustment
Obtained by RTK GPS Observation

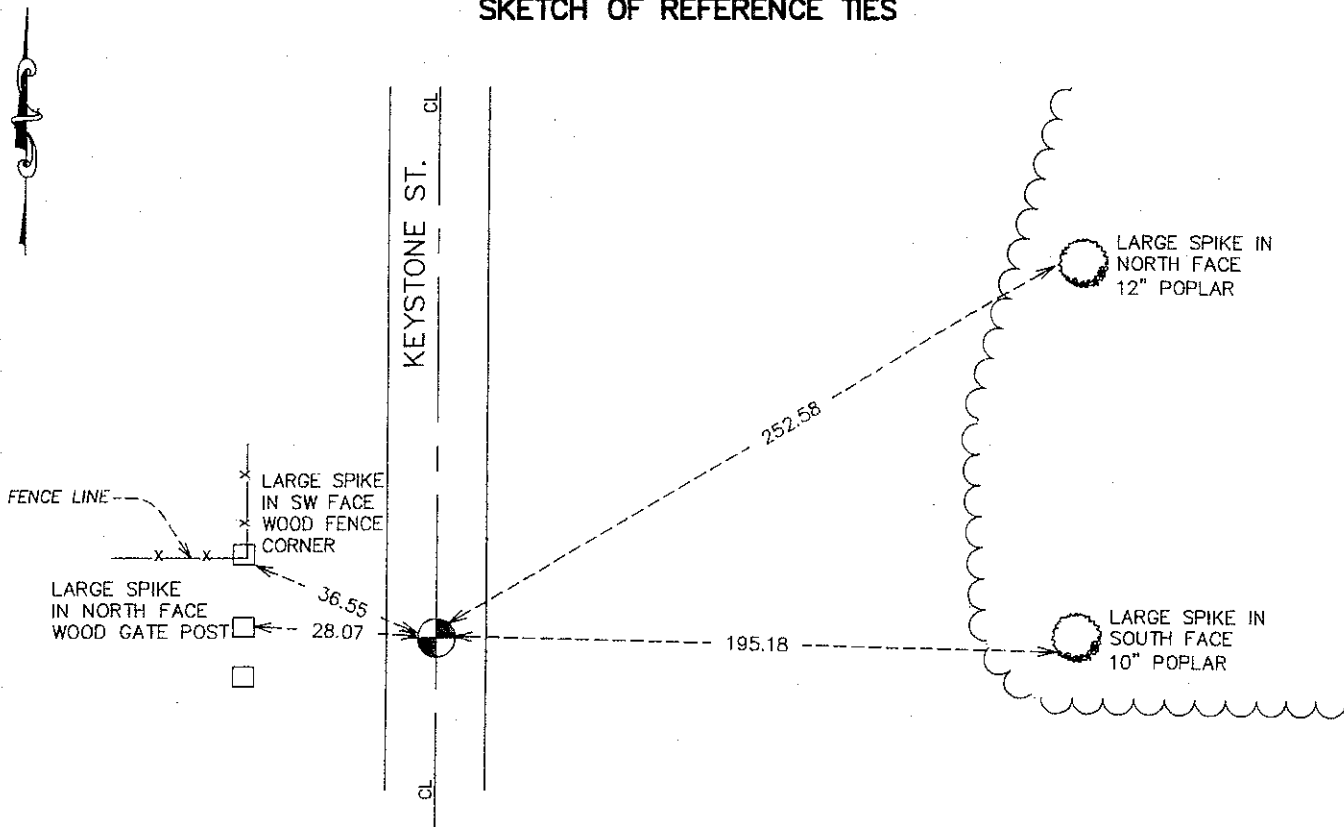
Northing= 177013.14

Easting= 396110.66

Note: NAD 1983, HARN 1996 Adjustment coordinates are NOT compatible with NAD 1983 coordinates

Note: 1 Meter=3937/1200, U.S. Survey Feet

SKETCH OF REFERENCE TIES



Statement of evidence relative to this corner location is on back of page.

I hereby certify that this document and the data contained herein was prepared by me or under my direct supervision.

Ernest J. Rud
Signature

4-4-08
Date

Registration No. 9808

Land Surveyor, Professional Engineer

County Surveyor, County Engineer

OFFICE OF THE COUNTY RECORDER

County of _____

I hereby certify that this document was filed in the County Recorder's office at _____ M. on the

_____ day of _____ A.D., 20__

County Recorder _____

BY _____ Deputy

DOCUMENT NO. _____

EAST QUARTER CORNER SECTION 22, TOWNSHIP 40, RANGE 24

STATEMENT OF EVIDENCE

ALL GOVERNMENT BEARING TREES ARE NOW GONE. THERE ARE NO RE-SURVEY NOTES ON FILE FOR THIS CORNER.

ON SEPTEMBER 15, 2004, DALE ANDERSON MADE A 12 FOOT BY 12 FOOT BY 3.5 FOOT DEEP EXCAVATION WITH THE KANABEC COUNTY HIGHWAY DEPARTMENT BACKHOE. THE EXCAVATION WAS CENTERED ON THE CENTERLINE INTERSECTION OF A NORTH-SOUTH COUNTY ROAD AND AN OLD ROAD BED WEST. THIS LOCATION FITS A PROPORTIONAL MEASUREMENT BETWEEN THE EXISTING CORNERS AT THE NORTHEAST AND THE SOUTHEAST CORNERS OF SECTION 22.

ON SEPTEMBER 9, 2005 HE SET A 7/8 INCH BY 24 INCH REBAR WITH AN ALUMINUM KANABEC COUNTY CAP ON LINE BETWEEN THE NORTHEAST CORNER AND THE SOUTHEAST CORNER OF SECTION 22, AND ITS INTERSECTION WITH THE CENTERLINE OF AN OLD ROAD BED GOING TO THE WEST 0.5 FEET BELOW THE SURFACE. FIVE REFERENCE TIES WERE MADE TO A SPIKE AS SHOWN ON THE CERTIFICATE.

IN 2008 E.G. RUD & SONS, INC. FOUND THIS MONUMENT AND KANABEC COUNTY COORDINATES WERE STABLISHED ON THIS POSITION USING GLOBAL POSITIONING SYSTEM (G.P.S.) EQUIPMENT.