

# CERTIFICATE OF LOCATION OF GOVERNMENT CORNER

NORTHEAST Corner of Section 27, Township 40, Range 24, 4TH P.M.

STATE OF MINNESOTA, County of KANABEC

At the corner location shown on the sketch:

FOUND A KANABEC COUNTY CAST ALUMINUM MONUMENT WITH MAGNETS OVER THE "X" ON SANDSTONE

Kanabec County U.S. Survey Feet Coordinates  
NAD 1983, HARN 1996 Adjustment  
Obtained by RTK GPS Observation

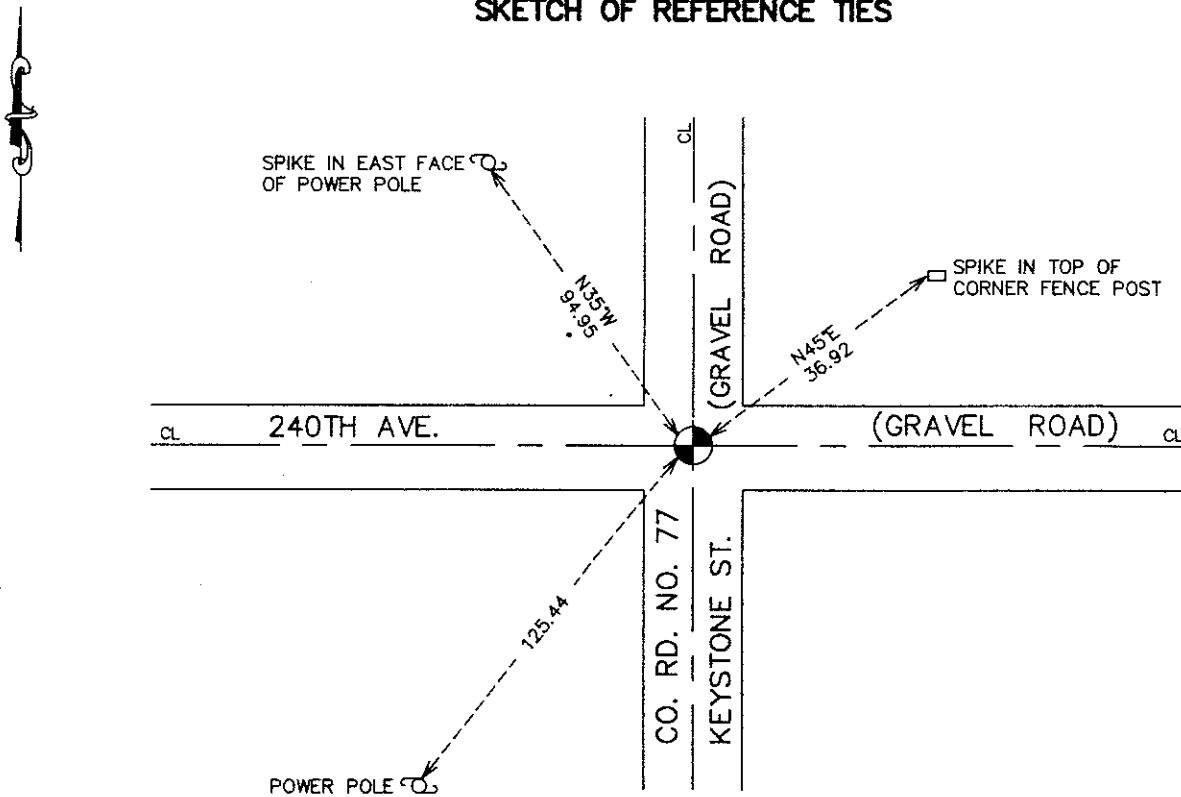
Northing= 174351.64

Easting= 396097.41

Note: NAD 1983, HARN 1996 Adjustment coordinates are NOT compatible with NAD 1983 coordinates

Note: 1 Meter=3937/1200 U.S. Survey Feet

## SKETCH OF REFERENCE TIES



Statement of evidence relative to this corner location is on back of page.

I hereby certify that this document and the data contained herein was prepared by me or under my direct supervision.

*Ernest Lund*  
Signature

3-31-2008  
Date

Registration No. 9808

Land Surveyor,      [ ] Professional Engineer

[ ] County Surveyor,      [ ] County Engineer

### OFFICE OF THE COUNTY RECORDER

County of \_\_\_\_\_

I hereby certify that this document was filed in the County Recorder's office at \_\_\_\_\_ M. on the \_\_\_\_\_ day of \_\_\_\_\_ A.D., 20\_\_\_\_

County Recorder \_\_\_\_\_

BY \_\_\_\_\_ Deputy

DOCUMENT NO. \_\_\_\_\_

NORTHEAST CORNER SECTION 27, TOWNSHIP 40, RANGE 24

**STATEMENT OF EVIDENCE**

IN 1975 M.B. RUDE SET A MONUMENT FROM SANDSTONE MARKED "X;" WHICH WAS FOUND IN EXCAVATION. STONE WAS FOUND IN PLACE BY CHAS HANDSCHU IN 1928. SANDSTONE FIT ALL OCCUPATION LINES GOOD.

IN FEBRUARY 2008 E.G. RUD & SONS, INC. FOUND THE MONUMENT, TOOK NEW TIES, AND ESTABLISHED KANABEC COUNTY COORDINATES WERE STABLISHED ON THIS POSITION USING GLOBAL POSITIONING SYSTEM (G.P.S.) EQUIPMENT.