

CERTIFICATE OF LOCATION OF GOVERNMENT CORNER

EAST QUARTER Corner of Section 27, Township 40, Range 24, 4TH P.M.
STATE OF MINNESOTA, County of KANABEC

At the corner location shown on the sketch:
SET A KANABEC COUNTY MONUMENT

Kanabec County U.S. Survey Feet Coordinates
NAD 1983, HARN 1996 Adjustment
Obtained by RTK GPS Observation

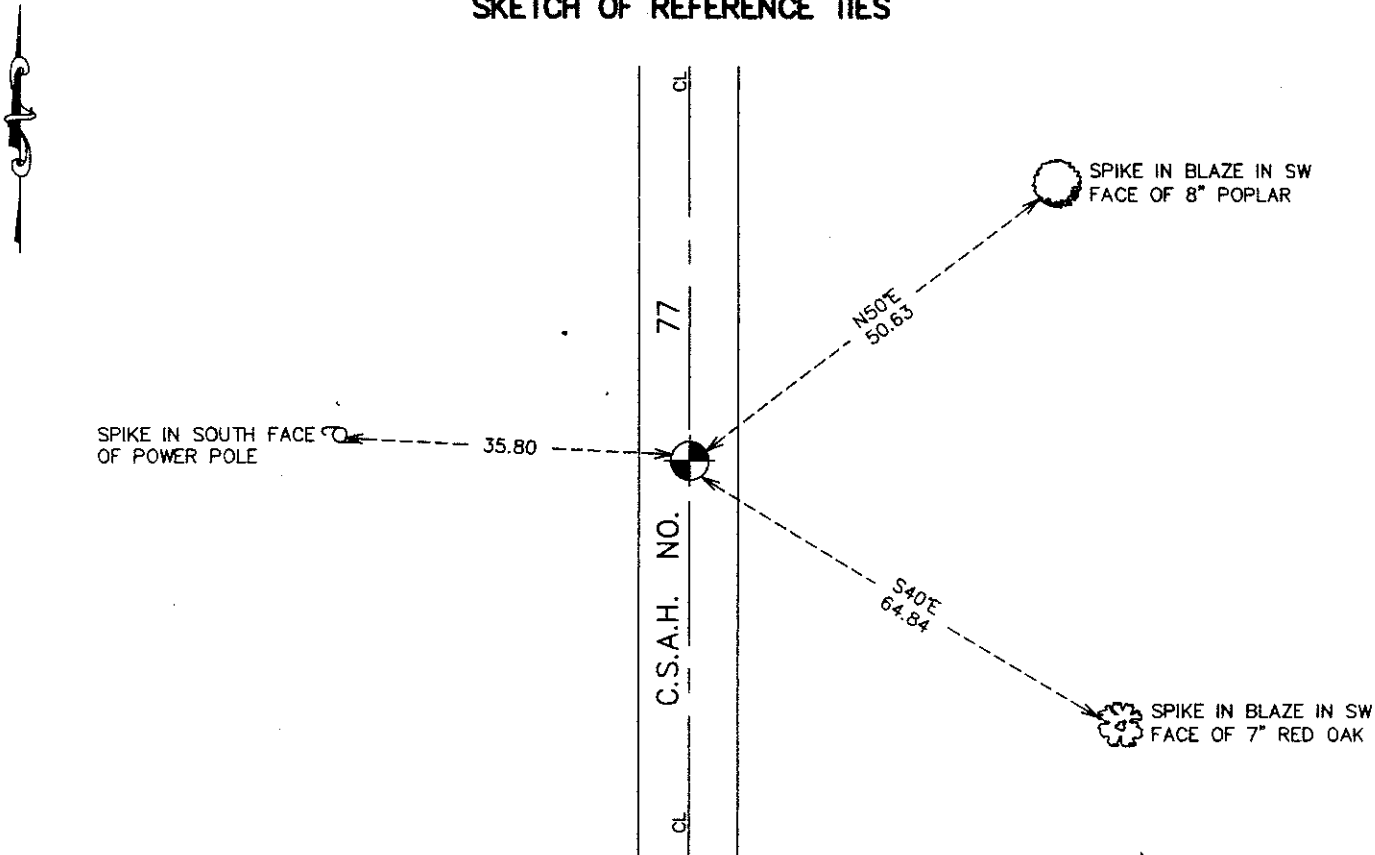
Northing= 171780.07

Easting= 396161.86

Note: NAD 1983, HARN 1996 Adjustment
coordinates are NOT compatible with
NAD 1983 coordinates

Note: 1 Meter=3937/1200 U.S. Survey Feet

SKETCH OF REFERENCE TIES



Statement of evidence relative to this corner location is on back of page.

I hereby certify that this document and the data contained herein was prepared by me or under my direct supervision.

Ernest J. Rud
Signature

3-31-2008
Date

Registration No. 9808

- Land Surveyor, Professional Engineer
 County Surveyor, County Engineer

OFFICE OF THE COUNTY RECORDER

County of _____

I hereby certify that this document was filed in the County Recorder's office at _____ M. on the

_____ day of _____ A.D., 20__

County Recorder _____

BY _____ Deputy

DOCUMENT NO. _____

EAST QUARTER CORNER SECTION 27, TOWNSHIP 40, RANGE 24

STATEMENT OF EVIDENCE

ALL OF THE ORIGINAL BEARING TREES ARE NOW GONE.

CHARLES HANDSCHU'S SURVEY RECORDS FROM 1928 SHOW THIS CORNER 2573 FEET SOUTH OF THE NORTHWEST CORNER OF SECTION 26.

M.B. RUDE RAN A SURVEY AROUND SECTION 26 AND LOCATED THE LINES OF OCCUPATION AND THERE IS A FENCE AND TREE LINE EAST AND WEST OF THE ROAD AT 2572 FEET.

AN EXCAVATION WAS MADE WITH THE BACKHOE AT THIS LOCATION AND NO EVIDENCE WAS FOUND. IT APPEARS THAT THE ROAD IS IN A CUT SECTION AND ALL EVIDENCE REMOVED.

M.B. RUDE SET A 2 AND 3/4 INCH BY 19 INCH CAST IRON MONUMENT AT THE CENTERLINE OF NORTH-SOUTH ROAD AND OLD FENCE LINES EAST-WEST. THIS LOCATION FITS HANDSCHU'S SURVEY FROM 1928.

IN FEBRUARY 2008 E.G. RUD & SONS, INC. RAN A SURVEY AROUND SECTION 26 AND COULD NOT FIND ANY EVIDENCE OF THE CAST IRON MONUMENT SET BY M.B. RUDE. FROM MATHEMATICAL INFORMATION DONE BY M.B. RUDE A POSITION WAS COMPUTED FOR THIS CORNER AND A NEW MONUMENT SET. THE ONLY REMAINING REMNANT OF A TIE TO A POWERPOLE CHECKED GOOD. NEW TIES WERE TAKEN AND KANABEC COUNTY COORDINATES WERE ESTABLISHED ON THIS POSITION USING GLOBAL POSITIONING SYSTEM (G.P.S.) EQUIPMENT.