

CERTIFICATE OF LOCATION OF GOVERNMENT CORNER

NORTH QUARTER Corner of Section 35, Township 40, Range 24, 4TH P.M.

STATE OF MINNESOTA, County of KANABEC

At the corner location shown on the sketch:

FOUND A 4 INCH BY 17 INCH KANABEC COUNTY CAST ALUMINUM MONUMENT.

Kanabec County U.S. Survey Feet Coordinates
NAD 1983, HARN 1996 Adjustment
Obtained by RTK GPS Observation

Northing= 169231.53

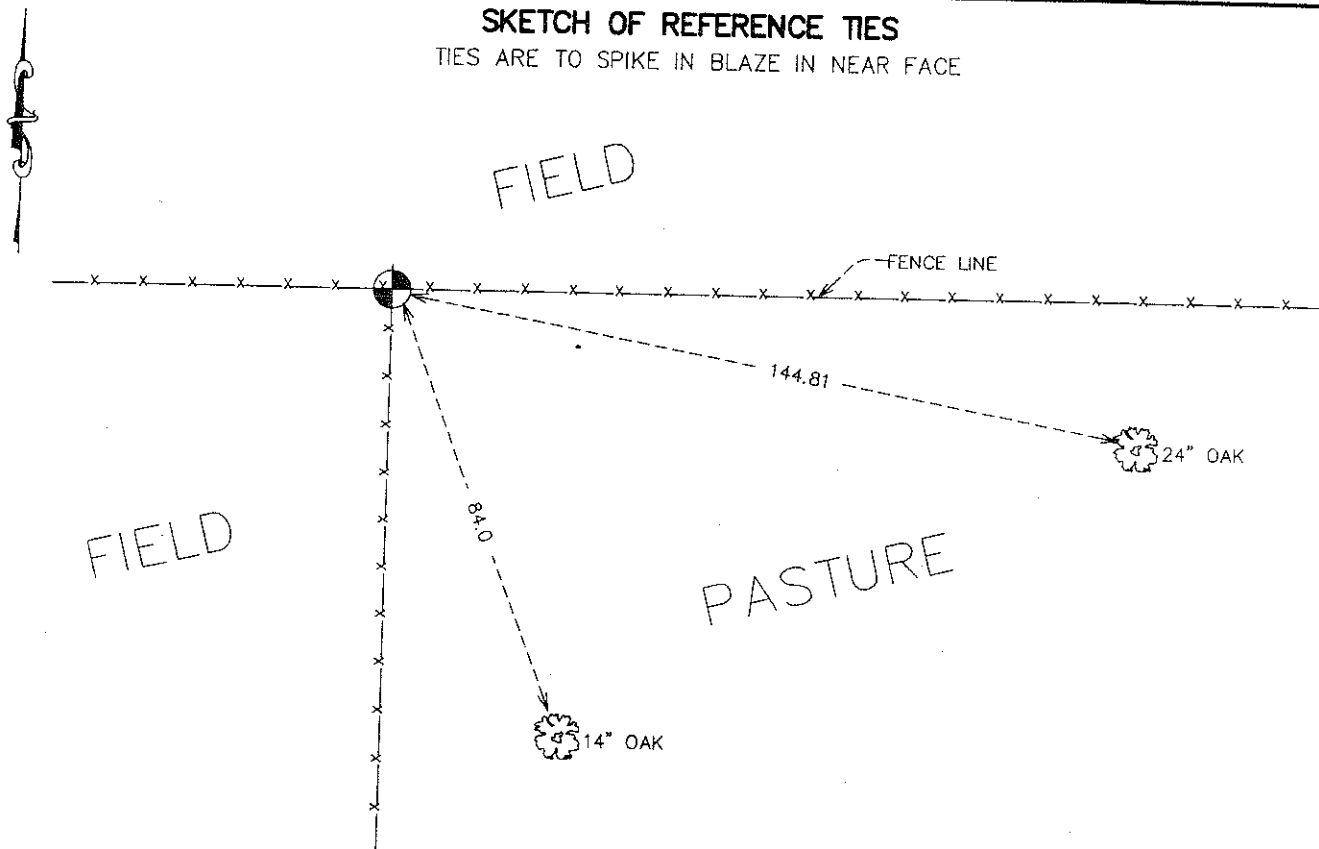
Easting= 398881.46

Note: NAD 1983, HARN 1996 Adjustment
coordinates are NOT compatible with
NAD 1983 coordinates

Note: 1 Meter=3937/1200 U.S. Survey Feet

SKETCH OF REFERENCE TIES

TIES ARE TO SPIKE IN BLAZE IN NEAR FACE



Statement of evidence relative to this corner location is on back of page.

I hereby certify that this document and the data contained herein was prepared by me or under my direct supervision.

Ernest Gud
Signature

2-07-2008
Date

Registration No. 9808

Land Surveyor, Professional Engineer

County Surveyor, County Engineer

OFFICE OF THE COUNTY RECORDER

County of _____

I hereby certify that this document was filed in the County Recorder's office at _____ M. on the

_____ day of _____ A.D., 20 _____

County Recorder _____

BY _____ Deputy

DOCUMENT NO. _____

NORTH QUARTER CORNER SECTION 35, TOWNSHIP 40, RANGE 24

STATEMENT OF EVIDENCE

ALL OF THE ORIGINAL BEARING TREES ARE NOW GONE.

CHARLES HANDSCHU'S SURVEY IN SECTION 26 IN 1928 SHOWS AN ANGLE OF 90 DEGREES 28 MINUTES FROM THE NORTH QUARTER CORNER IN THE SOUTHWEST QUADRANT AND 2665 FEET FROM THE SOUTH QUARTER CORNER TO THE SOUTHEAST CORNER.

IN 1931, CHARLES HANDSCHU'S SURVEY IN SECTION 35 SHOWS A DISTANCE OF 2656 FROM THE SOUTH QUARTER CORNER TO THE SOUTHWEST CORNER OF SECTION 26.

M.B. RUDE RAN A SURVEY AROUND SECTION 26 AND LOCATED A CORNER FENCE POST 10 FEET SOUTH OF THE EAST-WEST FENCE. THE FENCE RUNS SOUTH. RUDE SET A 4 INCH BY 17 INCH ALUMINUM MONUMENT ON THE NORTHERLY EXTENSION OF THE FENCE LINE SOUTH AND ON THE EAST-WEST FENCE LINE. THIS LOCATION FITS WELL WITH HANDSCHU'S SURVEY FROM 1928-1931.

IN 2004 E.G. RUD & SONS, INC. ESTABLISHED KANABEC COUNTY COORDINATES ON THIS POSITION USING GLOBAL POSITIONING SYSTEM (G.P.S.) EQUIPMENT.