

# CERTIFICATE OF LOCATION OF GOVERNMENT CORNER

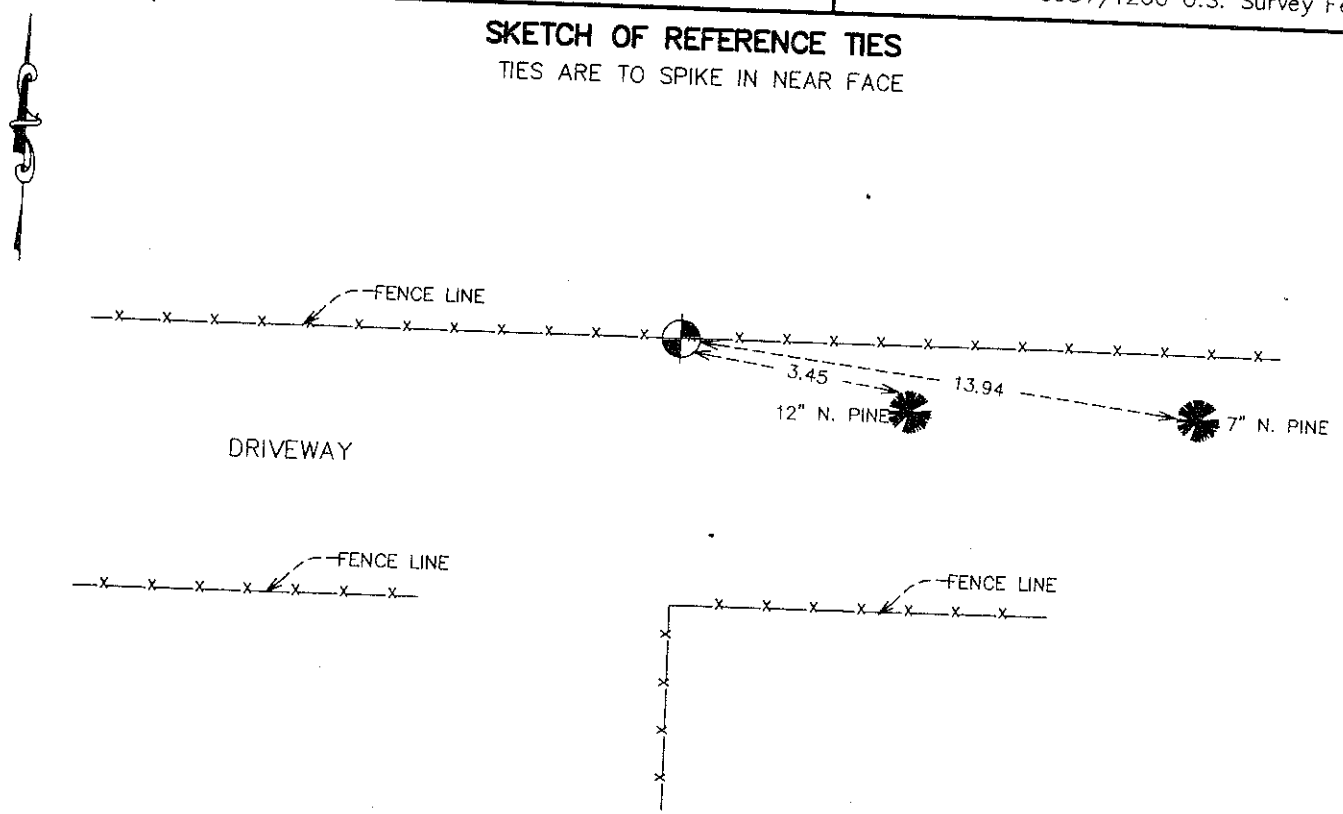
EAST QUARTER Corner of Section 34, Township 40, Range 24, 4TH P.M.  
STATE OF MINNESOTA, County of KANABEC

At the corner location shown on the sketch:  
FOUND A 7/8 INCH BY 36 INCH CAPED REBAR.

Kanabec County U.S. Survey Feet Coordinate:  
NAD 1983, HARN 1996 Adjustment  
Obtained by RTK GPS Observation  
Northing= 166553.71  
Easting= 396269.96  
Note: NAD 1983, HARN 1996 Adjustment  
coordinates are NOT compatible with  
NAD 1983 coordinates  
Note: 1 Meter=3937/1200 U.S. Survey Feet

## SKETCH OF REFERENCE TIES

TIES ARE TO SPIKE IN NEAR FACE



Statement of evidence relative to this corner location is on back of page.

I hereby certify that this document and the data contained herein was prepared by me or under my direct supervision.

*Ernest Blund*  
Signature

2-07-2008  
Date

Registration No. 9808

- Land Surveyor,     Professional Engineer  
 County Surveyor,     County Engineer

### OFFICE OF THE COUNTY RECORDER

County of \_\_\_\_\_  
I hereby certify that this document was filed in the County Recorder's office at \_\_\_\_\_ M. on the \_\_\_\_\_ day of \_\_\_\_\_ A.D., 20\_\_\_\_

County Recorder \_\_\_\_\_  
BY \_\_\_\_\_ Deputy

DOCUMENT NO. \_\_\_\_\_

EAST QUARTER CORNER SECTION 34, TOWNSHIP 40, RANGE 24

**STATEMENT OF EVIDENCE**

ALL OF THE ORIGINAL BEARING TREES ARE NOW GONE.

THE RECORDS OF THOMAS VICKERY, A SURVEYOR, FROM 1898 SHOW THIS CORNER ON A SPLIT OF THE EAST LINE OF SECTION 34 IN A SURVEY OF SECTION 35, BUT DOES NOT SHOW IF IT WAS FOUND OR IF HE SET ANYTHING AT THIS CORNER. CHARLES HANDSCHU'S SURVEYOR RECORDS FROM 1931 SHOW A SURVEY WAS MADE IN THE NORTHWEST QUARTER OF THE NORTHWEST QUARTER OF SECTION 35, TOWNSHIP 40, RANGE 24, BUT DOES NOT SHOW WHAT WAS FOUND OR SET AT THE QUARTER CORNER.

THERE IS AN EXISTING ROAD RUNNING EAST AND WEST AT THIS CORNER WITH A FENCE LINE ALONG THE NORTH RIGHT OF WAY AND A FENCE LINE RUNNING SOUTH FROM THIS CORNER.

JAMES EVENSON A LAND OWNER THAT LIVES SOUTHEAST OF THIS CORNER STATED THAT THE EAST-WEST ROAD IS ALL SOUTH OF THE QUARTER LINE. THIS WAS VERIFIED BY CHECKING THE DEED TO THE PROPERTY IN THE EAST HALF OF THE SOUTHEAST QUARTER OF SECTION 34 WHICH EXCEPTS THE NORTH 4 RODS.

THIS CORNER WAS SET BY OBLITERATED METHODS AT THE INTERSECTION OF THE EAST-WEST FENCE LINE AND THE NORTHERLY EXTENSION OF THE FENCE LINE SOUTH.

IN 2005 E.G. RUD & SONS, INC. ESTABLISHED KANABEC COUNTY COORDINATES ON THIS POSITION USING GLOBAL POSITIONING SYSTEM (G.P.S.) EQUIPMENT.