

CERTIFICATE OF LOCATION OF GOVERNMENT CORNER

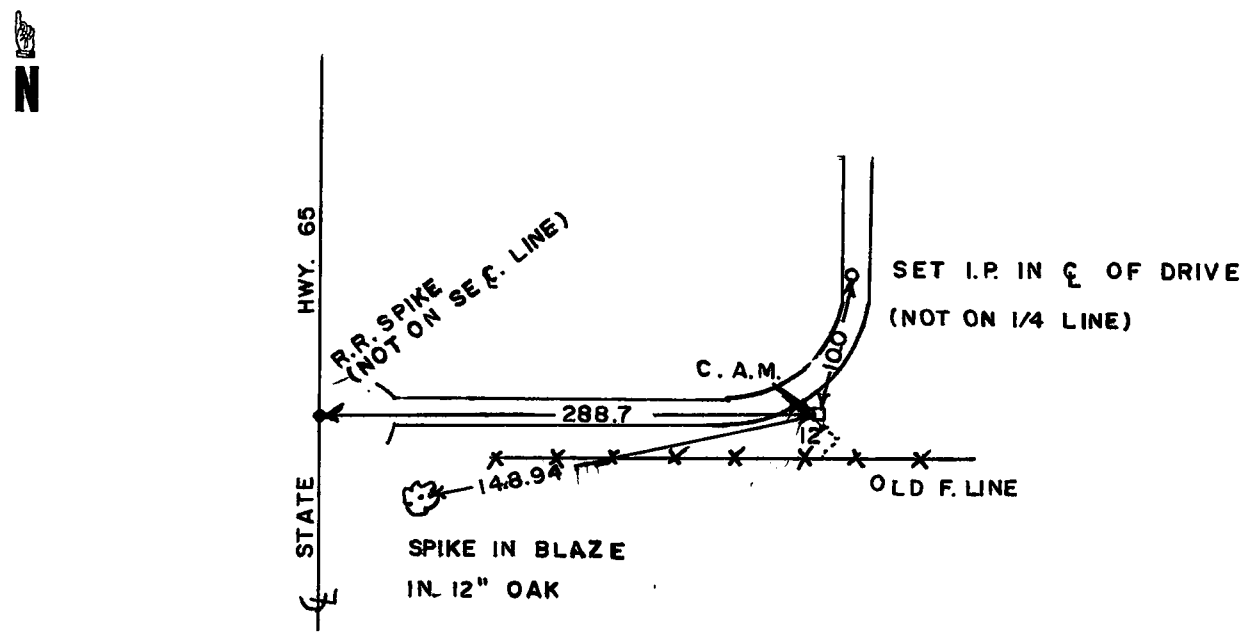
S. 1/4 Corner of Section 1, Township 40, Range 24, 4th P.M.
STATE OF MINNESOTA, County of KANABEC

At the corner location shown on the sketch

On _____ found a _____
Date

left monument as found, lowered monument, removed monument (explain)
 On 7/15/77 placed a CAST ALUMINUM MONUMENT
Date

SKETCH OF REFERENCE TIES



Statement of evidence relative to this corner location is on back of page.

I hereby certify that this document and the data contained herein was prepared by me or under my direct supervision.

M. B. Ladd 8-23-77
Signature Date

Registration No. 8195

Land Surveyor, Professional Engineer
 County Surveyor, County Engineer

OFFICE OF THE REGISTER OF DEEDS

County of _____
I hereby certify that this document was filed in the Register of Deeds office at _____ M. on the _____ day of _____ A.D., 19_____

Register of Deeds _____

By _____, Deputy

DOCUMENT NO. _____

STATEMENT OF EVIDENCE

The North-South location was established from the Southwest corner through an iron pipe found 249 feet West of the right of way of Highway No. 65. This iron pipe fits an old East-West fence line. This North-South location of the South line of the West Half of Section also fits well with the call of 975 feet North of the 1/16 corner for the Southeast corner of RUTH'S ADDITION.