

CERTIFICATE OF LOCATION OF GOVERNMENT CORNER

NORTH QUARTER Corner of Section 13, Township 40, Range 24, 4TH P.M.

STATE OF MINNESOTA, County of KANABEC

At the corner location shown on the sketch:
FOUND A P.K. NAIL.

Kanabec County U.S. Survey Feet Coordinates
NAD 1983, HARN 1996 Adjustment
Obtained by RTK GPS Observation

Northing= 184998.42

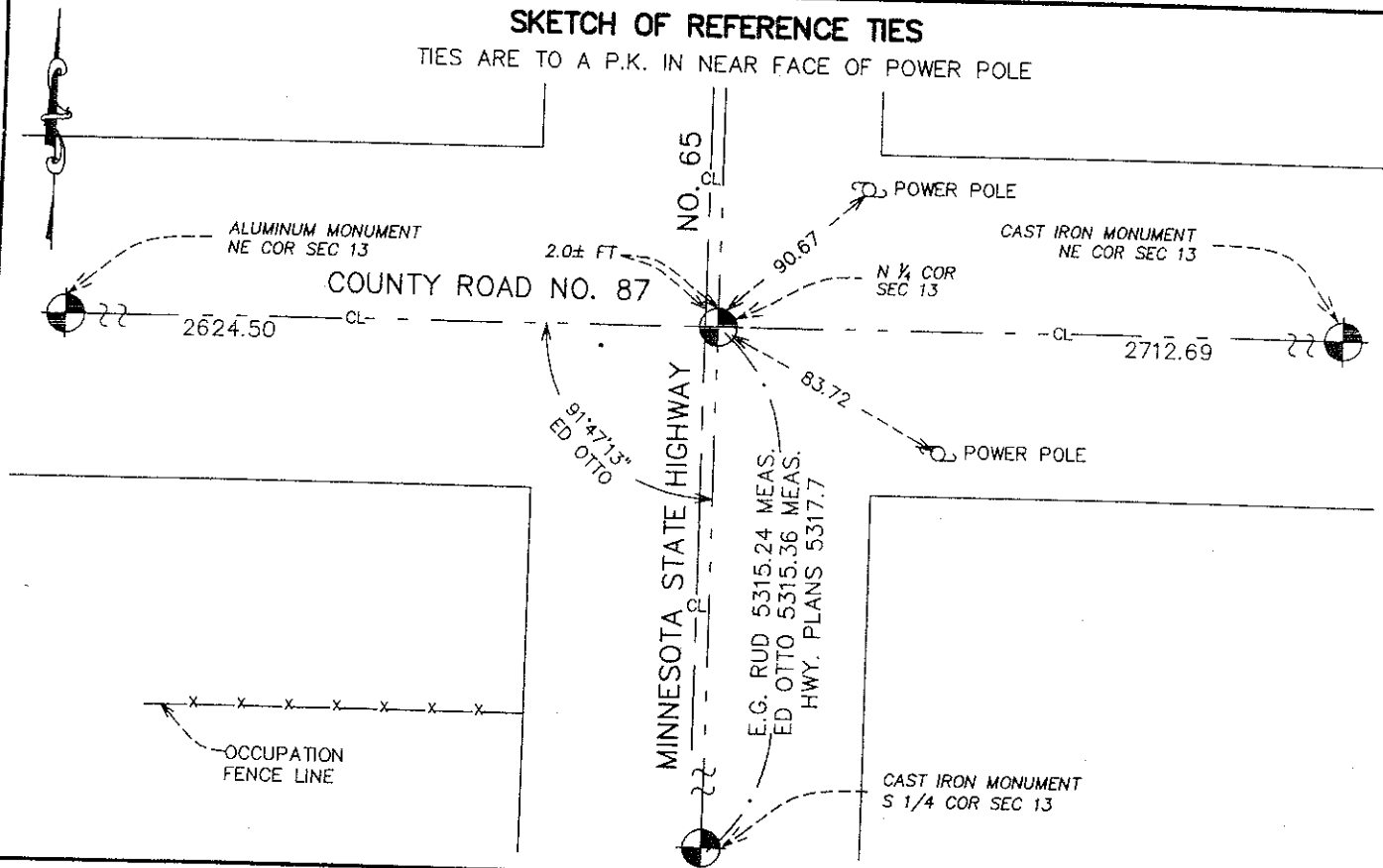
Easting= 404180.11

Note: NAD 1983, HARN 1996 Adjustment
coordinates are NOT compatible with
NAD 1983 coordinates

Note: 1 Meter=3937/1200 U.S. Survey Feet

SKETCH OF REFERENCE TIES

TIES ARE TO A P.K. IN NEAR FACE OF POWER POLE



Statement of evidence relative to this corner location is on back of page.

I hereby certify that this document and the data contained herein was prepared by me or under my direct supervision.

Ernest J. Blund
Signature

2-07-2008
Date

Registration No. 9808

Land Surveyor, Professional Engineer
 County Surveyor, County Engineer

OFFICE OF THE COUNTY RECORDER

County of _____

I hereby certify that this document was filed in the County Recorder's office at _____ M. on the _____ day of _____ A.D., 20 _____

County Recorder _____

BY _____ Deputy

DOCUMENT NO. _____

NORTH QUARTER CORNER SECTION 13, TOWNSHIP 40, RANGE 24

STATEMENT OF EVIDENCE

ON JUNE 30, 1995 SURVEYOR EDWARD J. OTTO PLACED A P.K. NAIL ON LINE BETWEEN THE NORTHWEST CORNER AND THE NORTHEAST CORNER OF SECTION 13, 1.75 FEET WEST OF THE TANGENT TO THE CENTERLINE OF HIGHWAY NO. 65 AND 34 FEET NORTH OF THE P.I. AS SHOWN ON THE HIGHWAY RIGHT OF WAY PLANS FOR HIGHWAY NO. 65.

ON SAID PLANS, THIS WAS THE LOCATION OF AN "OAK POST" SHOWN AS THE NORTH QUARTER CORNER, DISTANCE TO NORTHWEST CORNER (2624.50 FEET) FITS THE DISTANCE GIVEN ON INDEX PAGE ON OLD COUNTY SURVEYORS RECORD BOOKS. ORIGIN AND DATE UNKNOWN.

IN 2004 E.G. RUD & SONS, INC. ESTABLISHED KANABEC COUNTY COORDINATES ON THIS POSITION USING GLOBAL POSITIONING SYSTEM (G.P.S.) EQUIPMENT.