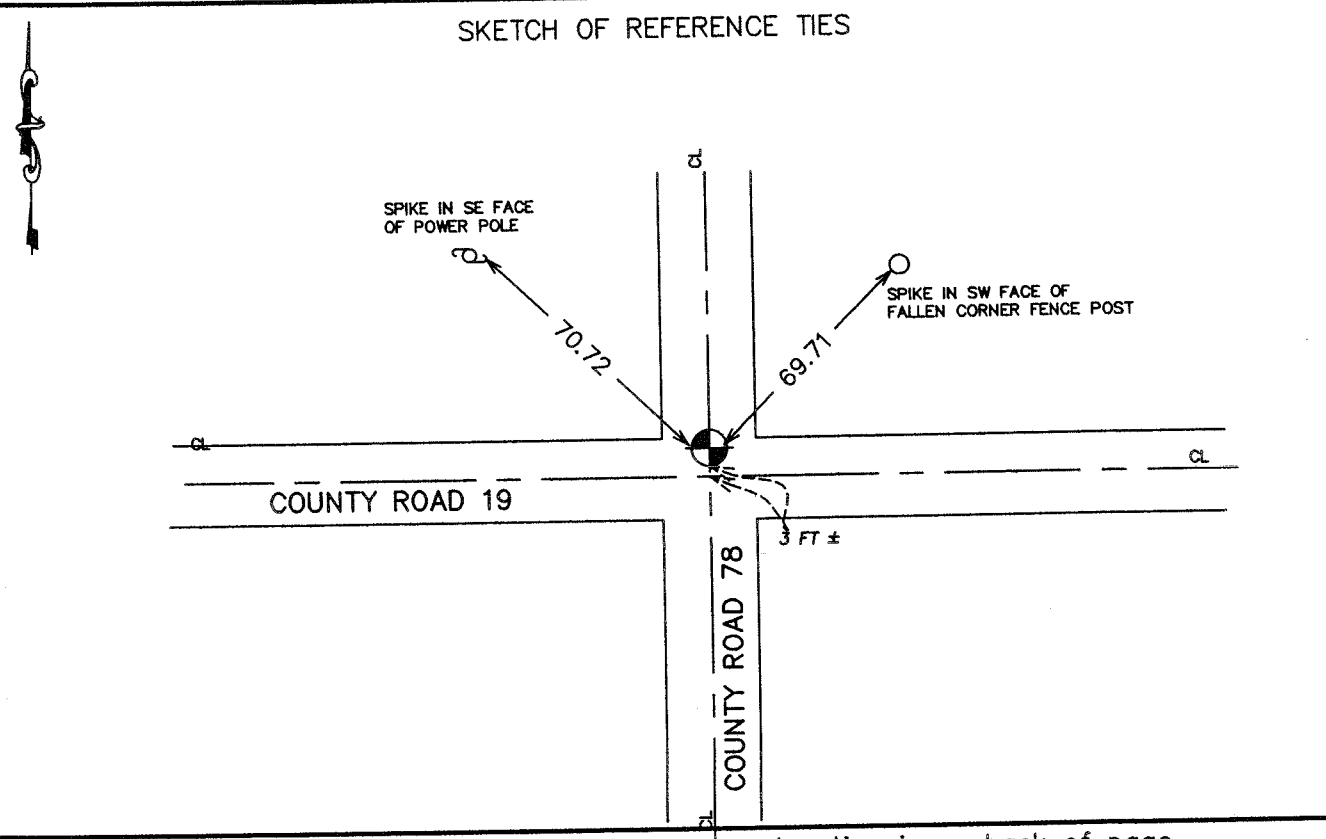


CERTIFICATE OF LOCATION OF GOVERNMENT CORNER

SOUTHEAST Corner of Section 11, Township 40, Range 24, 4TH P.M.
 STATE OF MINNESOTA, County of KANABEC

At the corner location shown on the sketch: On 06/ /2003 Found a Kanabec County Monument.	Kanabec County U.S. Survey Feet Coordinates NAD 1983, HARN 1996 Adjustment Obtained by RTK GPS Observation Northing= <u>185076.10</u> Easting= <u>401556.75</u> Note: NAD 1983, HARN 1996 Adjustment coordinates are NOT compatible with NAD 1983 coordinates Note: 1 Meter=3937/1200 U.S. Survey Feet
--	--



I hereby certify that this document and the data contained herein was prepared by me or under my direct supervision. <div style="display: flex; justify-content: space-between; align-items: center;"> <div style="text-align: center;"> Signature </div> <div style="text-align: center;"> <u>6-30-2004</u> Date </div> </div> Registration No. <u>9808</u> <input checked="" type="checkbox"/> Land Surveyor, [] Professional Engineer [] County Surveyor, [] County Engineer	<h3 style="text-align: center;">OFFICE OF THE COUNTY RECORDER</h3> County of _____ I hereby certify that this document was filed in the County Recorder's office at _____ M. on the _____ day of _____ A.D., 20____ County Recorder _____ BY _____ Deputy DOCUMENT NO. _____
--	---

STATEMENT OF EVIDENCE
(FROM TIE SHEET 370)

Set monument over 1 1/4" reinforcing rod which was found in excavation. Rod was set by the County Hwy. Dept. when they found a sandstone marked with an "x" for the corner. Rod was set in 1962.

(2003)

In June of 2003, we found this monument and established Kanabec County Coordinates on this corner using G.P.S. equipment.