

CERTIFICATE OF LOCATION OF GOVERNMENT CORNER

4024058

EAST QUARTER Corner of Section 14, Township 40, Range 24, 4TH P.M.

STATE OF MINNESOTA, County of KANABEC

At the corner location shown on the sketch:
FOUND A 2 3/4 INCH BY 19 INCH CAST IRON MONUMENT

Kanabec County U.S. Survey Feet Coordinates
 NAD 1983, HARN 1996 Adjustment
 Obtained by RTK GPS Observation

Northing= 182389.98

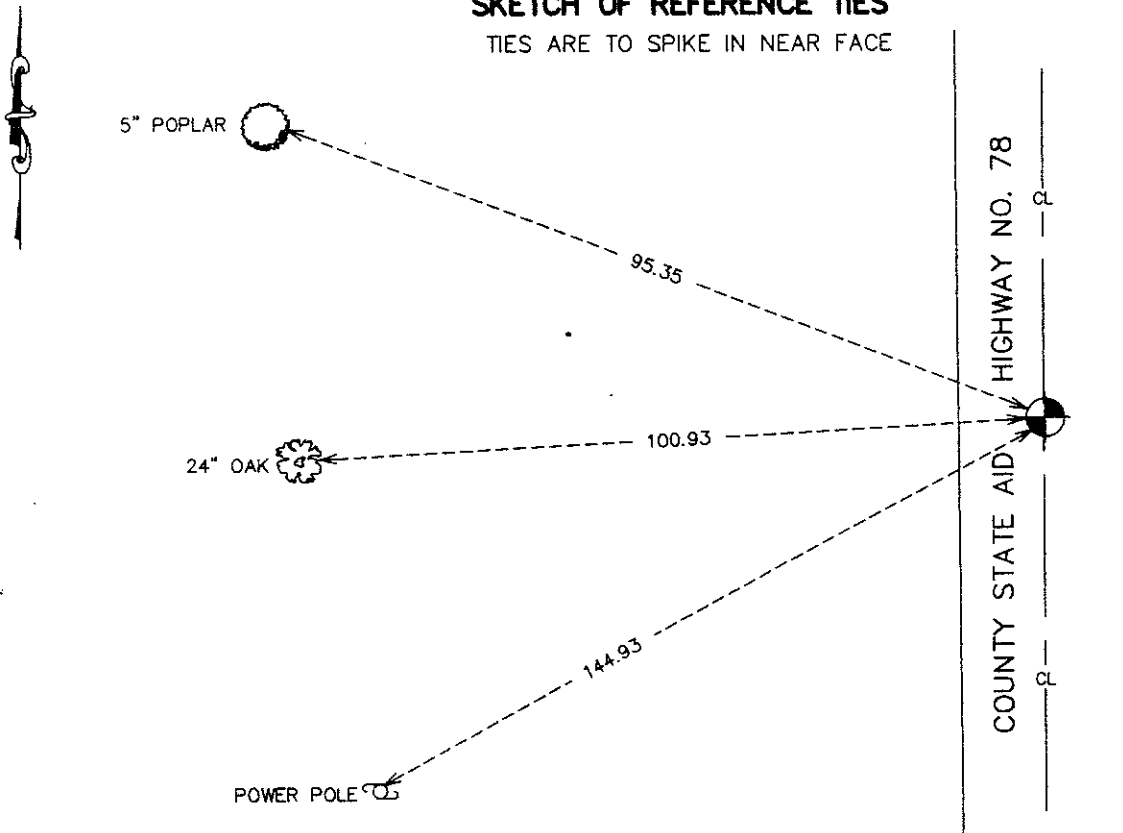
Easting= 401521.33

Note: NAD 1983, HARN 1996 Adjustment
 coordinates are NOT compatible with
 NAD 1983 coordinates

Note: 1 Meter=3937/1200 U.S. Survey Feet

SKETCH OF REFERENCE TIES

TIES ARE TO SPIKE IN NEAR FACE



Statement of evidence relative to this corner location is on back of page.

I hereby certify that this document and the data contained herein was prepared by me or under my direct supervision.

 Signature Date

Registration No. _____

Land Surveyor, Professional Engineer

County Surveyor, County Engineer

OFFICE OF THE COUNTY RECORDER

County of _____

I hereby certify that this document was filed in the County Recorder's office at _____ M. on the

_____ day of _____ A.D., 20__

County Recorder _____

BY _____ Deputy

DOCUMENT NO. _____

EAST QUARTER CORNER SECTION 14, TOWNSHIP 40, RANGE 24

STATEMENT OF EVIDENCE

ALL OF THE ORIGINAL BEARING TREES ARE NOW GONE.

THERE IS NO RE-SURVEY DATA ON FILE FOR THIS CORNER.

ON JUNE 7, 1979, M.B. RUDE MADE AN EXCAVATION 10 FEET BY 10 FEET, 3 FEET DEEP, 1 FOOT INTO NATURAL GROUND WITH A BACKHOE. AT THE CENTER LINE OF A NORTH-SOUTH ROAD AND FENCE LINE WEST. NO EVIDENCE WAS FOUND IN THE EXCAVATION.

A 2 3/4 INCH BY 19 INCH CAST IRON MONUMENT WAS SET IN THE CENTER LINE OF THE NORTH-SOUTH ROAD AND ON THE EASTERLY EXTENSION OF A FENCE LINE WEST.

M.B. RUDE RAN A SURVEY AROUND SECTION 14 AND THIS LOCATION FALLS ON A STRAIGHT LINE BETWEEN THE NORTHEAST CORNER AND THE COMPUTED LOCATION OF THE SOUTHEAST CORNER (WHICH FALLS IN A POND) AND 4 FEET NORTH OF A SPLIT OF THE EAST LINE. THIS LOCATION WAS ACCEPTED AS THE BEST AVAILABLE EVIDENCE OF THE ORIGINAL CORNER LOCATION.

IN 2008 E.G. RUD & SONS, INC. RAN A SURVEY AROUND SECTIONS 4, 23, AND 26, FOUND MONUMENT, AND KANABEC COUNTY COORDINATES WERE ESTABLISHED ON THIS POSITION USING GLOBAL POSITIONING SYSTEM (G.P.S.) EQUIPMENT.