

CERTIFICATE OF LOCATION OF GOVERNMENT CORNER

NORTH QUARTER Corner of Section 24, Township 40, Range 24, 4TH P.M.

STATE OF MINNESOTA, County of KANABEC

At the corner location shown on the sketch:
FOUND A 4 INCH BY 17 INCH KANABEC COUNTY CAST IRON MONUMENT.

Kanabec County U.S. Survey Feet Coordinates
 NAD 1983, HARN 1996 Adjustment
 Obtained by RTK GPS Observation

Northing= 179683.19

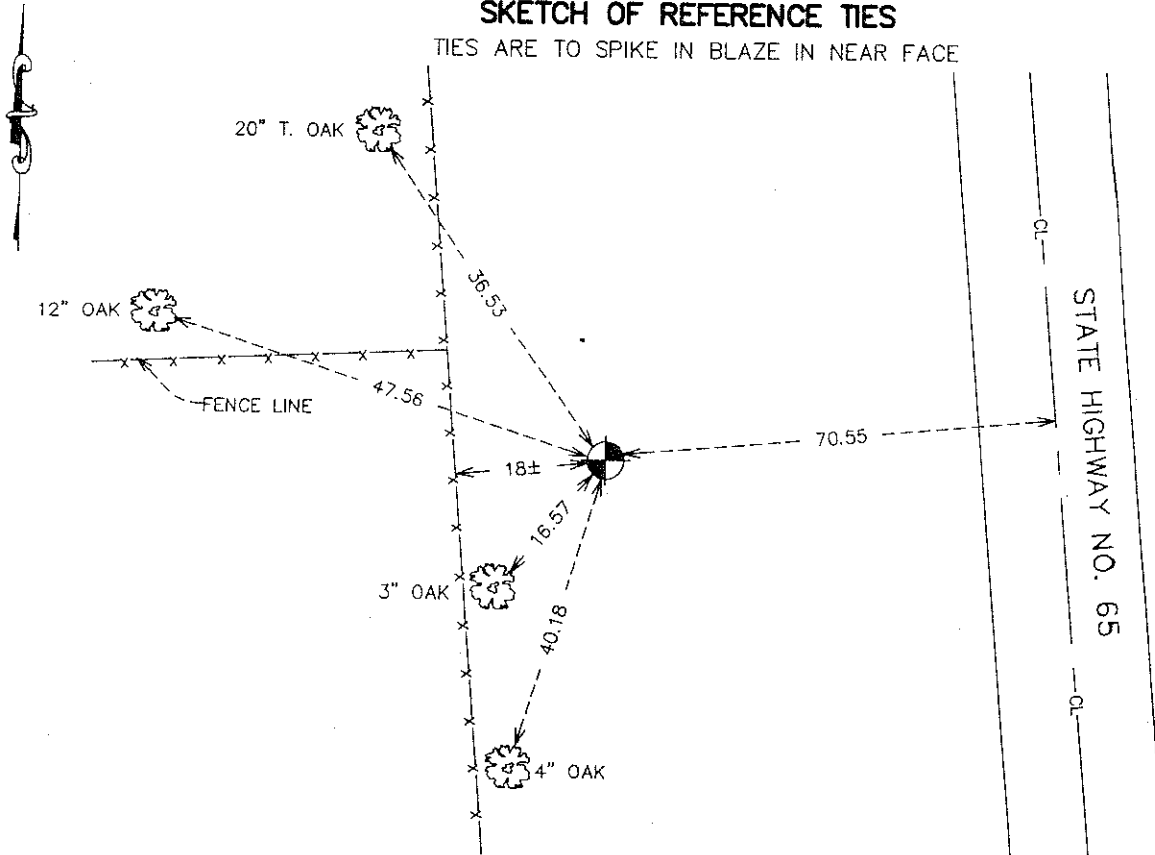
Easting= 404188.87

Note: NAD 1983, HARN 1996 Adjustment coordinates are NOT compatible with NAD 1983 coordinates

Note: 1 Meter=3937/1200 U.S. Survey Feet

SKETCH OF REFERENCE TIES

TIES ARE TO SPIKE IN BLAZE IN NEAR FACE



Statement of evidence relative to this corner location is on back of page.

I hereby certify that this document and the data contained herein was prepared by me or under my direct supervision.

Ernest Blud
 Signature

2-07-2008
 Date

Registration No. 9808

- Land Surveyor, Professional Engineer
 County Surveyor, County Engineer

OFFICE OF THE COUNTY RECORDER

County of _____

I hereby certify that this document was filed in the County Recorder's office at _____ M. on the _____ day of _____ A.D., 20 _____

County Recorder _____

BY _____ Deputy

DOCUMENT NO. _____

NORTH QUARTER CORNER SECTION 24, TOWNSHIP 40, RANGE 24

STATEMENT OF EVIDENCE

ALL OF THE ORIGINAL BEARING TREES ARE NOW GONE.

THE MINNESOTA DEPARTMENT OF TRANSPORTATION'S SURVEY RECORDS FOR STATE HIGHWAY NO. 65 IN THE 1930'S SHOW A WOODEN POST IN PLACE AT THIS CORNER, 28 FEET LEFT OF THE PI STATION 359+59.5.

THERE IS A NEW CENTER LINE FOR HIGHWAY NO. 65 NOW, SO M.B. RUDE COMPUTED THE LOCATION FROM THE CENTER LINE OF THE NEW HIGHWAY AND SET A 4 INCH BY 17 INCH CAST IRON MONUMENT.

THIS LOCATION IS 209.46 FEET NORTH OF THE DEPARTMENT OF TRANSPORTATION'S 357+99.2 AND 70.55 FEET LEFT AT RIGHT ANGLES.

THIS LOCATION FITS AN OLD FENCE LINE EAST OF HIGHWAY NO. 65 AND IS ABOUT 3 FEET SOUTH OF A VERY CROOKED FENCE LINE WEST.

IN JANUARY 2006 E.G. RUD & SONS, INC. ESTABLISHED KANABEC COUNTY COORDINATES ON THIS POSITION USING GLOBAL POSITIONING SYSTEM (G.P.S.) EQUIPMENT.