

CERTIFICATE OF LOCATION OF GOVERNMENT CORNER

Northeast Corner of Section 23, Township 40 North, Range 24 West,
4th Principal Meridian, Kanabec County, State of Minnesota

At the corner location shown on the sketch:
Computed Location, corner falls in pond.

Kanabec County U.S. Survey Feet Coordinates
NAD 1983, HARN 1996 Adjustment
Obtained by RTK GPS observation
Northing: 179696.6330
Easting: 401485.7737

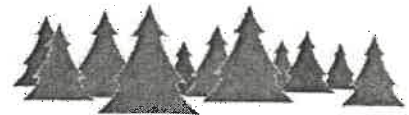
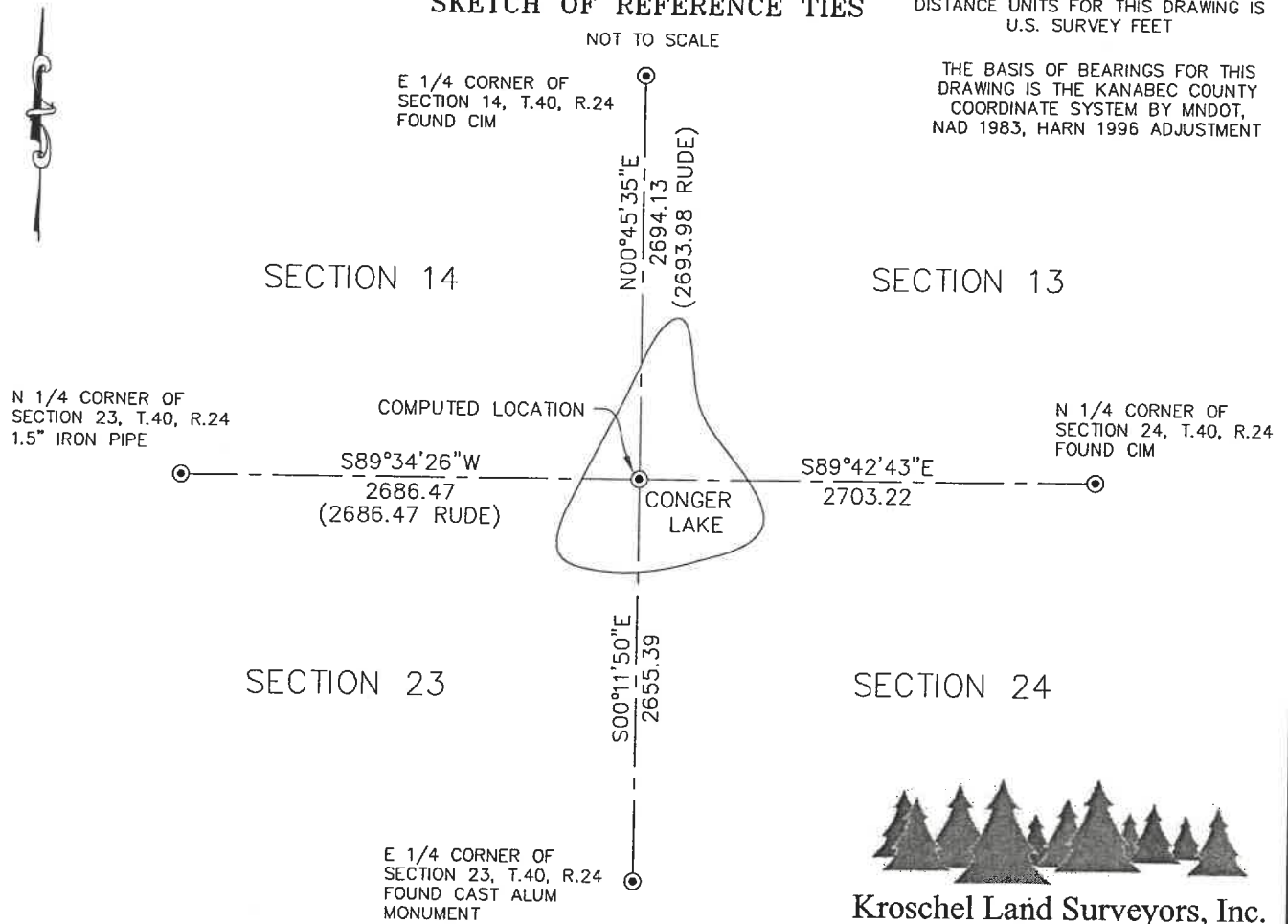
Note: NAD 1983, HARN 1996 Adjustment
coordinates are NOT compatible with
NAD 1983 coordinates
Note: 1 Meter = 3937/1200 U.S. Survey Feet

SKETCH OF REFERENCE TIES

NOT TO SCALE

DISTANCE UNITS FOR THIS DRAWING IS
U.S. SURVEY FEET

THE BASIS OF BEARINGS FOR THIS
DRAWING IS THE KANABEC COUNTY
COORDINATE SYSTEM BY MNDOT,
NAD 1983, HARN 1996 ADJUSTMENT



Kroschel Land Surveyors, Inc.

1639 Main Street North, Suite 6, Pine City, MN 55063
Phone: 320-629-3267 Fax: 320-629-0176

Statement of evidence relative to this corner location is on back of page.

I hereby certify that this report was prepared by me or under my direct supervision, that the United States public land survey monument record is correct and complete to the best of my knowledge and belief, and that I am a duly Licensed Land Surveyor under the laws of the State of Minnesota.


Tyler J. Kroschel, County Surveyor

1-29-2021
Date

License No. 44490

OFFICE OF THE COUNTY RECORDER
County of Kanabec

I hereby certify that this document was filed in the
County Recorder's office at _____ .M. on the
_____ day of _____ A.D., 20____

County Recorder _____
_____, Deputy

DOCUMENT NO. _____

Statement of Evidence:

In October of 1855, Deputy Surveyor Silas Barnard set 3 witness posts to witness the Northeast Corner of Section 23, Township 40 North, Range 24 West, 4th Principal Meridian. The corner fell in a pond.

No search was made for the witness corners or ties.

1916—A Final Road Order of Town Board was filed in the office of the County Auditor opening a public road on the east lines of Sections 14 and 23. Attached is a survey map by Surveyor Chas. H. Peterson, dated October 25, 1915. The Survey shows the road going along the west side of a body of water.

1978—County Surveyor M. B. Rude made a survey in the NE 1/4 of Section 14 for Ward Blake. Rude computed a location for the SE corner of Section 14 by extending a fence line on the south line of Section 14 and intersecting the southerly extension of the road on the east line of Section 14. This location also fit the northerly extension of the road on the east line of Section 23. This location fit in harmony with lines of occupation in Section 14.

2017—I made a survey in the SW 1/4 of Section 13 for Ed Ramsey. I computed a location for the SW corner of Section 13 using M.B. Rude's dimensions from his 1978 survey in Section 14. Assigned Kanabec County Coordinates.

In February 2019, I made a survey around Section 24, Township 40 North, Range 24 West, 4th Principal Meridian for Jennifer Kvam. I used the same computed a location for this corner as my 2017 survey. This location was determined to be the best available evidence of the original corner location.



Kroschel Land Surveyors, Inc.

1639 Main Street North, Suite 6, Pine City, MN 55063
Phone: 320-629-3267 Fax: 320-629-0176