

# CERTIFICATE OF LOCATION OF GOVERNMENT CORNER

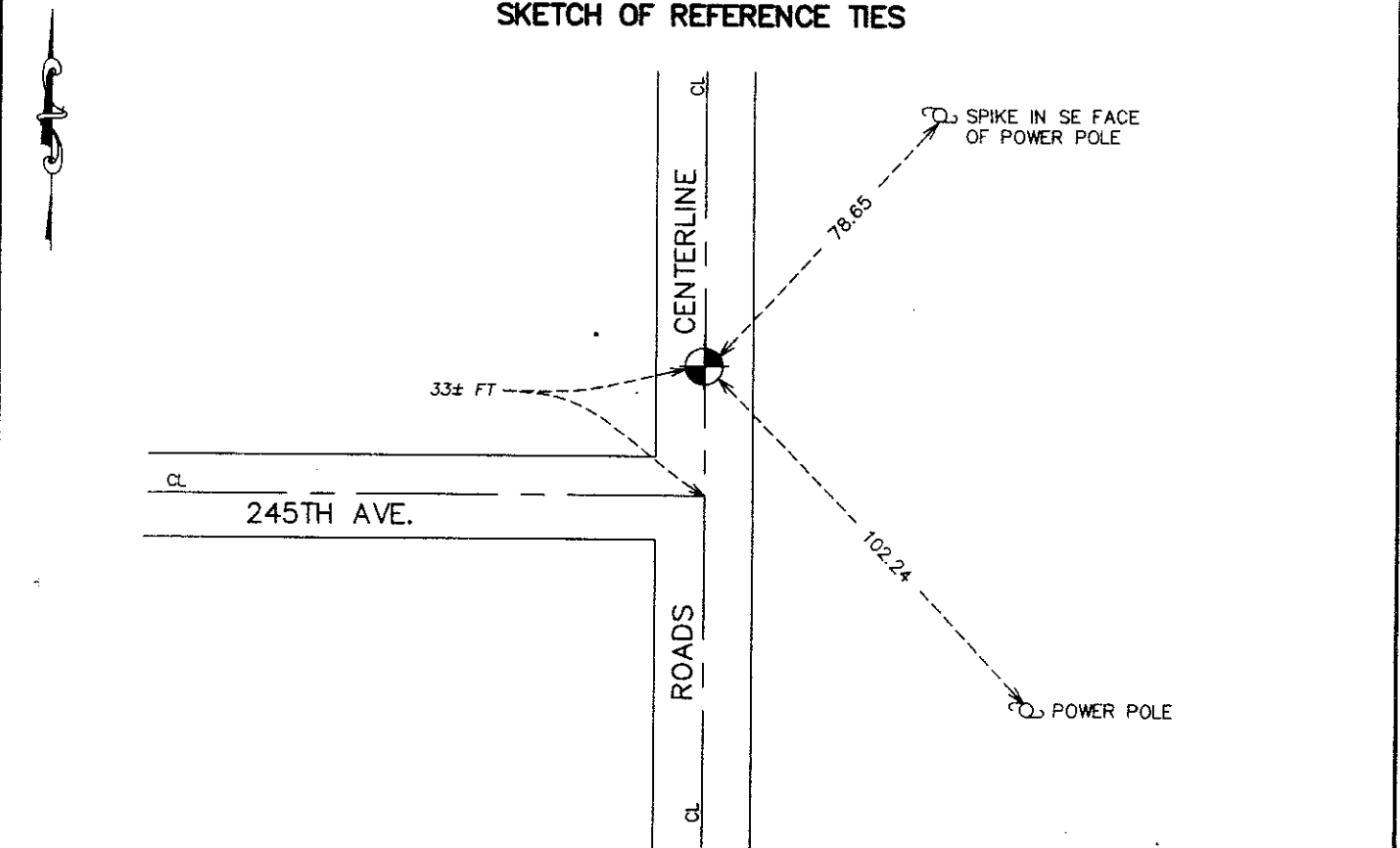
EAST QUARTER Corner of Section 23, Township 40, Range 24, 4TH P.M.

STATE OF MINNESOTA, County of KANABEC

At the corner location shown on the sketch:  
 FOUND A CAST ALUMINUM MONUMENT WITH MAGNETS OVER THE "X"  
 ON SANDSTONE

Kanabec County U.S. Survey Feet Coordinates  
 NAD 1983, HARN 1996 Adjustment  
 Obtained by RTK GPS Observation  
 Northing= 177041.26  
 Easting= 401494.92  
 Note: NAD 1983, HARN 1996 Adjustment  
 coordinates are NOT compatible with  
 NAD 1983 coordinates  
 Note: 1 Meter=3937/1200 U.S. Survey Feet

### SKETCH OF REFERENCE TIES



Statement of evidence relative to this corner location is on back of page.

I hereby certify that this document and the data contained herein was prepared by me or under my direct supervision.

Ernest J. Rud 3-31-2008  
Signature Date

Registration No. 9808

Land Surveyor,     Professional Engineer  
 County Surveyor,     County Engineer

### OFFICE OF THE COUNTY RECORDER

County of \_\_\_\_\_

I hereby certify that this document was filed in the County Recorder's office at \_\_\_\_\_ M. on the \_\_\_\_\_ day of \_\_\_\_\_ A.D., 20 \_\_\_\_\_

County Recorder \_\_\_\_\_

BY \_\_\_\_\_ Deputy

DOCUMENT NO. \_\_\_\_\_

EAST QUARTER CORNER SECTION 23, TOWNSHIP 40, RANGE 24

**STATEMENT OF EVIDENCE**

IN AUGUST 1975 M.B. RUDE SET A MONUMENT OVER A SANDSTONE MARKED WITH AN "X" WHICH WAS FOUND IN EXCAVATION AND HAS BEEN SET BY A LAND SURVEYOR IN 1920. THIS FIT OCCUPATION LINES GOOD. IN CENTERLINE OF THE NORTH-SOUTH ROADS GEO H. JENKS WAS THE SURVEYOR.

IN FEBRUARY 2008 E.G. RUD & SONS, INC. RE-ESTABLISHED THE CORNERS FROM REMAINING TIES, TOOK NEW TIES, AND ESTABLISHED KANABEC COUNTY COORDINATES ON THIS POSITION USING GLOBAL POSITIONING SYSTEM (G.P.S.) EQUIPMENT.