

CERTIFICATE OF LOCATION OF GOVERNMENT CORNER

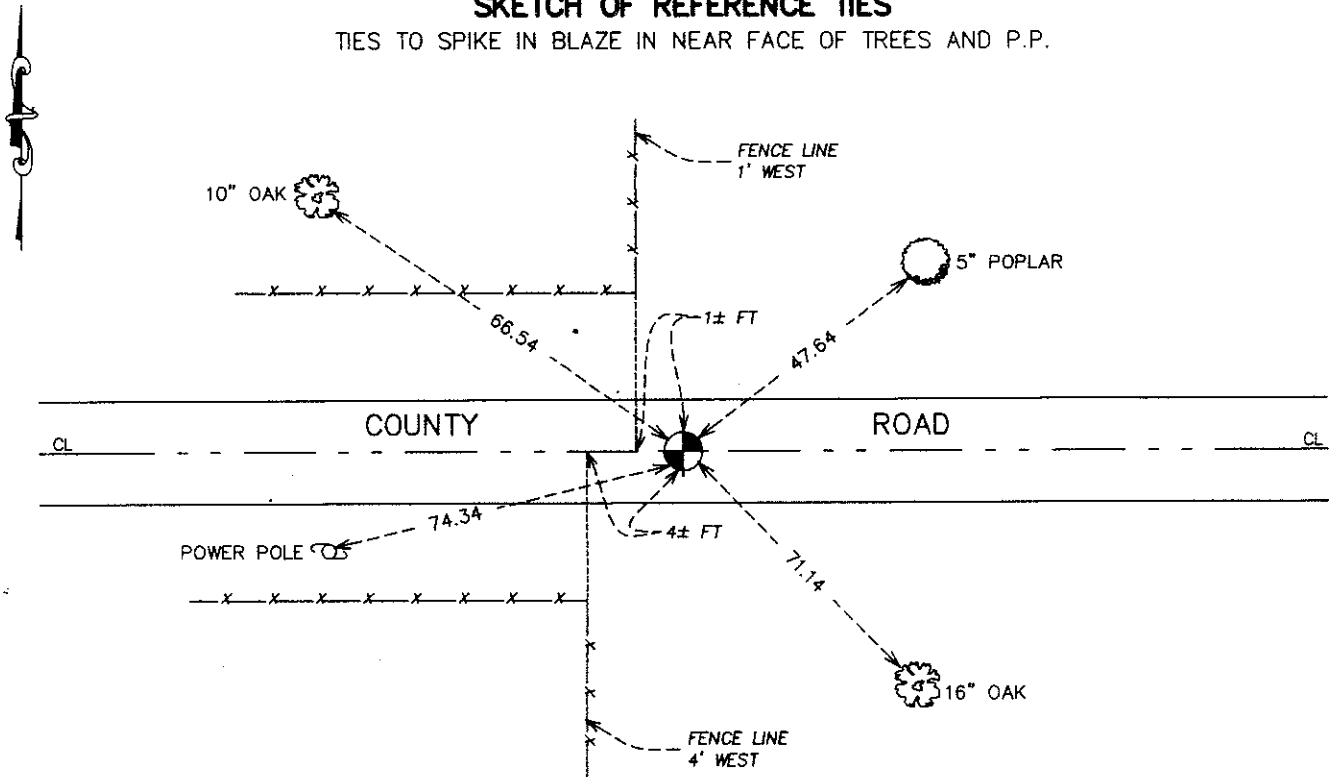
NORTH QUARTER Corner of Section 25, Township 40, Range 24, 4TH P.M.
 STATE OF MINNESOTA, County of KANABEC

At the corner location shown on the sketch:
 FOUND A CAST IRON MONUMENT

Kanabec County U.S. Survey Feet Coordinates
 NAD 1983, HARN 1996 Adjustment
 Obtained by RTK GPS Observation
 Northing= 174381.17
 Easting= 404179.18
 Note: NAD 1983, HARN 1996 Adjustment
 coordinates are NOT compatible with
 NAD 1983 coordinates
 Note: 1 Meter=3937/1200 U.S. Survey Feet

SKETCH OF REFERENCE TIES

TIES TO SPIKE IN BLAZE IN NEAR FACE OF TREES AND P.P.



Statement of evidence relative to this corner location is on back of page.

I hereby certify that this document and the data contained herein was prepared by me or under my direct supervision.

Ernest J. Bird
 Signature

3-31-2008
 Date

Registration No. 9808

- Land Surveyor, Professional Engineer
 County Surveyor, County Engineer

OFFICE OF THE COUNTY RECORDER

County of _____

I hereby certify that this document was filed in the County Recorder's office at _____ M. on the _____ day of _____ A.D., 20 _____

County Recorder _____

BY _____ Deputy

DOCUMENT NO. _____

NORTH QUARTER CORNER SECTION 25, TOWNSHIP 40, RANGE 24

STATEMENT OF EVIDENCE

ON APRIL 12, 1977 M.B. RUDE SET AN IRON PIPE, BY SINGLE PROPORTIONAL MEASUREMENT, BETWEEN THE SOUTHWEST AND THE SOUTHEAST CORNERS OF SECTION 24. THIS LOCATION FITS THE CENTER LINE OF THE EAST-WEST COUNTY ROAD, AND IS ONE FOOT EAST OF THE FENCE LINE NORTH AND FOUR FEET EAST OF THE FENCE LINE SOUTH.

ON APRIL 26, 1977 M.B. RUDE OFFSET THE IRON PIPE AND MADE AN EXCAVATION WITH THE COUNTY BACKHOE AT THIS LOCATION. THE EXCAVATION WAS 10 FEET WIDE NORTH-SOUTH AND 15 FEET LONG EAST-WEST AND 3 FEET DEEP AND 1 FOOT INTO THE NATURAL GROUND.

NO EVIDENCE OF THE ORIGINAL CORNER WAS FOUND. M.B. RUDE BACKFILLED THE EXCAVATION AND SET A CAST IRON MONUMENT TO REPLACE THE IRON PIPE.

IN FEBRUARY 2008 E.G. RUD & SONS, INC. ESTABLISHED KANABEC COUNTY COORDINATES ON THIS POSITION USING GLOBAL POSITIONING SYSTEM (G.P.S.) EQUIPMENT.