

CERTIFICATE OF LOCATION OF GOVERNMENT CORNER

NORTHEAST Corner of Section 26, Township 40, Range 24, 4TH P.M.
STATE OF MINNESOTA, County of KANABEC

At the corner location shown on the sketch:
FOUND A CAST ALUMINUM MONUMENT WITH MAGNETS OVER THE "X"
ON SANDSTONE

Kanabec County U.S. Survey Feet Coordinates
NAD 1983, HARN 1996 Adjustment
Obtained by RTK GPS Observation

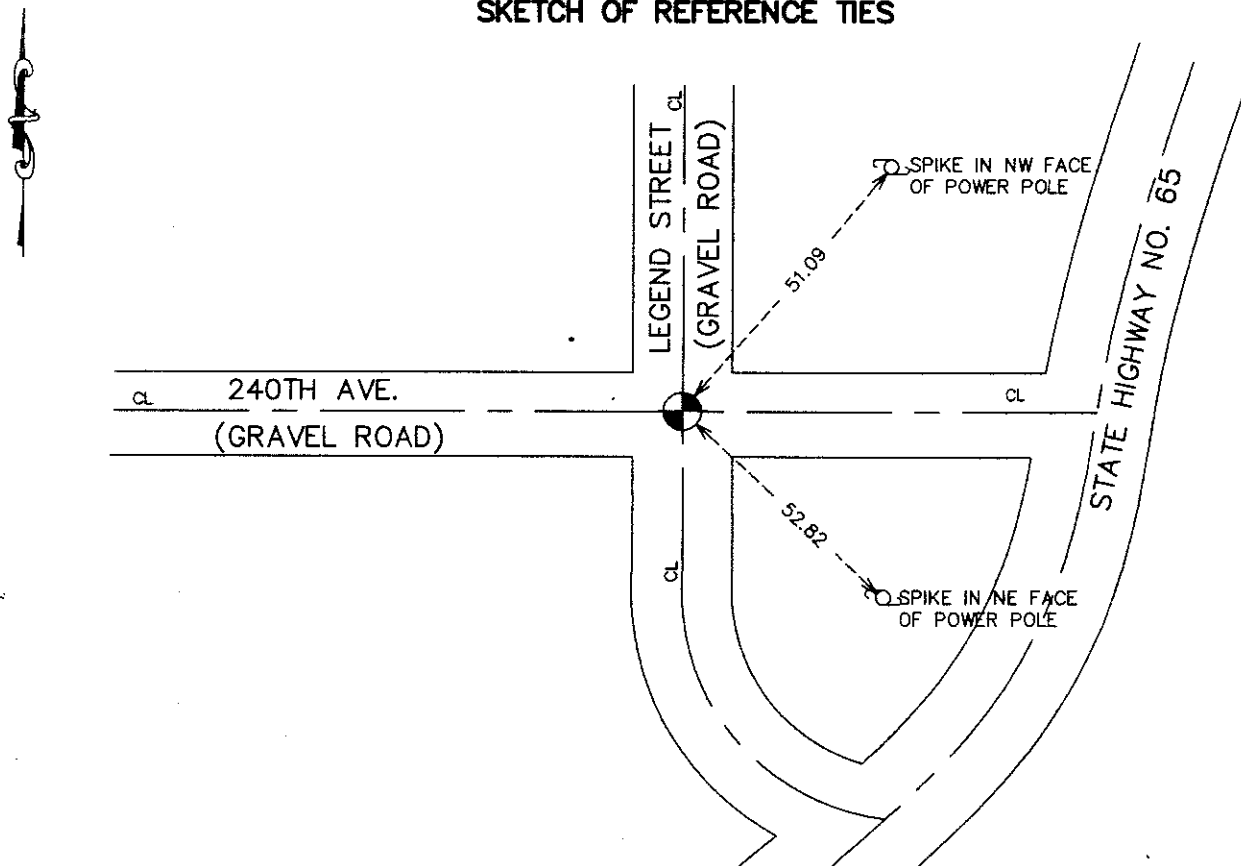
Northing= 174387.60

Easting= 401511.40

Note: NAD 1983, HARN 1996 Adjustment
coordinates are NOT compatible with
NAD 1983 coordinates

Note: 1 Meter=3937/1200 U.S. Survey Feet

SKETCH OF REFERENCE TIES



Statement of evidence relative to this corner location is on back of page.

I hereby certify that this document and the data contained herein was prepared by me or under my direct supervision.

Ernst J. Rud
Signature

3-31-2008
Date

Registration No. 9808

Land Surveyor, [] Professional Engineer
[] County Surveyor, [] County Engineer

OFFICE OF THE COUNTY RECORDER

County of _____

I hereby certify that this document was filed in the County Recorder's office at _____ M. on the

_____ day of _____ A.D., 20__

County Recorder _____

BY _____ Deputy

DOCUMENT NO. _____

NORTHEAST CORNER SECTION 26, TOWNSHIP 40, RANGE 24

STATEMENT OF EVIDENCE

IN 1975 M.B. RUDE SET MONUMENT OVER SANDSTONE MARKED WITH AN "X" WHICH WAS FOUND IN EXCAVATION AND SET FOR THE CORNER BY A LAND SURVEYOR IN 1928. FIT ALL OCCUPATION LINES GOOD. LAND SURVEYOR THAT SET THIS STONE WAS CHAS HANDSCHU .OR GEO H. JENKS, HANDSCHU FOUND THE STONE.

IN FEBRUARY 2008 E.G. RUD & SONS, INC. FOUND THIS MONUMENT IN A RE-SURVEY OF SECTIONS 23 AND 26 AND ESTABLISHED KANABEC COUNTY COORDINATES ON THIS POSITION USING GLOBAL POSITIONING SYSTEM (G.P.S.) EQUIPMENT.